

BT-400



Maximum basket bottom depth :
17.4 m

Maximum basket bottom height :
16.1 m

Maximum working radius :
11.4 m

Maximum horizontal underbridge reach :
15.0 m

Maximum basket loading capacity :
300 kg or 3 persons



MODEL : BT-400

SPECIFICATIONS

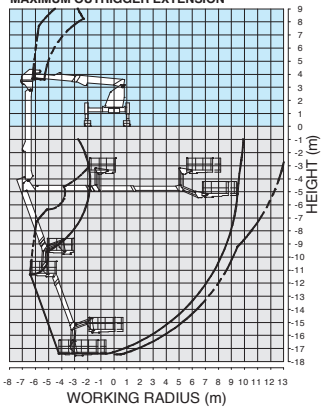
BASKET	
Outside dimensions	2.0 m x 0.85 m x 1.0 m (Length x width x depth)
Capacity	300 kg or three(3) persons
Automatic leveling system	By a double-acting hydraulic cylinder with link.
Slewing angle	190° (Left 90° Right 100°)
Maximum basket bottom depth	17.4 m
Maximum basket bottom height	16.1 m
Maximum working radius	11.4 m
Maximum horizontal underbridge reach	15.0 m
BOOM	
1st boom	Two-section full power telescoping boom of box construction. Telescopic system consists of a double-acting hydraulic cylinder. Hydraulic cylinder fitted with a holding valve and a pilot check valve. Boom length..... 6.0 m – 7.9 m
Slewing system	Hydraulic motor driven through planetary reduction gear. Slewing angle..... 200° (Left 100° Right 100°)
Elevation system	By a double-acting hydraulic cylinder, fitted with a holding valve. Elevation angle..... 0° – 77°
2nd boom	One-section boom of box construction. Boom length..... 6.96 m
Slewing system	Hydraulic motor driven through worm reduction gear. Slewing angle..... 285°
Elevation system	By a double-acting hydraulic cylinder, fitted with a holding valve. Elevation angle..... 0° – 90°
3rd boom	Three-section full power synchronized telescoping boom of box construction. The synchronization system consists of a double-acting hydraulic cylinder, an extension cable and a retraction cable. Hydraulic cylinder fitted with a holding valve and a pilot check valve. Boom length..... 5.18 m – 11.61 m
Elevation system	By a double-acting hydraulic cylinder, fitted with a holding valve and links. Elevation angle..... -70°–90°
4th boom	Box construction, parallel linkage. Boom length..... 1.3 m
Elevation system	By a double-acting hydraulic cylinder, fitted with a holding valve. Elevation angle..... -23°–90° Lifting height..... 1.8m
HYDRAULIC SYSTEM	
Pumps	Gear pumps and piston pump
Control valves	Multiple hydraulic-control valves actuated by switch with integral relief valves. And electric remote control from basket.
Hydraulic oil tank capacity	Approx. 150 L
Filter	Pressure and Return line filters

OUTRIGGERS	
Maximum extension width	Four hydraulically operated outriggers equipped with solid rubber tires. Each outrigger controlled simultaneously or independently from both side of carrier. Front 4.04 m Rear 4.18 m
CONTROLS AND MONITORS	
In basket	Levers for 1st boom telescoping, 1st boom elevation/rotation, 3rd boom telescoping, and 3rd boom elevation/rotation. Switches for 2nd boom elevation, 4th boom elevation, basket rotation, emergency stop-release, automatic boom stowing-extending, acceleration change-over, emergency pump start, prevention cancel and engine start. Monitor lamps for limit of automatic motion controller(AMC) and boom profile monitor system.
On rotating frame	Levers for 1st boom telescoping, 1st boom elevation/rotation, 3rd boom telescoping, and 3rd boom elevation/rotation. Switches for 2nd boom elevation, 4th boom elevation, basket rotation, emergency stop-release, automatic boom stowing-extending, acceleration change-over, emergency pump start, prevention cancel and engine start. Monitor lamps for limit of automatic motion controller(AMC) and boom profile monitor system.
Outriggers control	Levers for extension-retraction and outrigger selection. Switch for acceleration. Monitor lamps for vehicle tipping warning
SAFETY DEVICES	
	•Automatic working area limiter •Boom and basket automatic stowing •Automatic speed reduction and slow stop function. •Automatic speed control system •Boom profile monitor system (Prevent hitting 1st boom by 2nd boom, prevent hitting vehicle by 1st boom) •Jack interlock •Boom interlock •Vehicle tipping warning •Emergency stop system •Emergency pump •Hydraulic safety valves •Hydraulic cylinder lock valves •Outrigger indicator •Voice alarm •Guard for operation levers •Foot switch (on basket, on rotating frame)
ACCESSORIES	
OPTIONAL EQUIPMENT	•Hour meter •Chocks •Work light (on basket) •Marker lamps •Safety belt •Grease pump •Tools

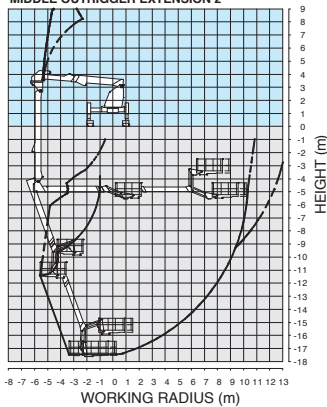
WORKING RANGE

BRIDGE INSPECTION OPERATION

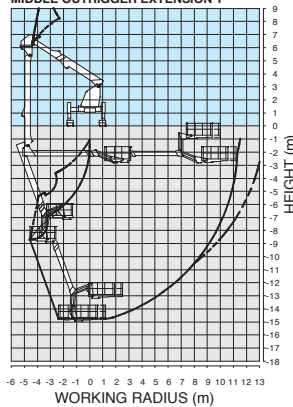
MAXIMUM OUTRIGGER EXTENSION



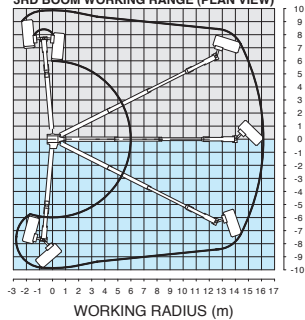
MIDDLE OUTRIGGER EXTENSION 2



MIDDLE OUTRIGGER EXTENSION 1

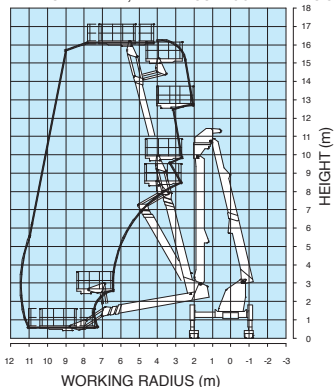


3RD BOOM WORKING RANGE (PLAN VIEW)



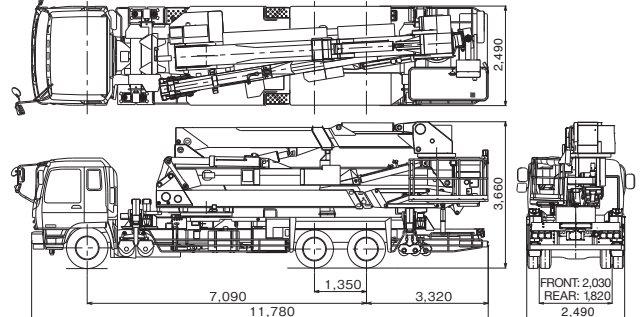
(AERIAL WORK PLATFORM OPERATION)

MAXIMUM MIDDLE2, MIDDLE1 OUTRIGGER EXTENSION



NOTES:
1. Working ranges shown are for a case where the bridge inspection device is set on firm, level ground, and do not include boom deflection.
2. The two-dot chain line --- indicates the moving range of the 1st boom section and the resulting enlarged work range.

DIMENSION



This is for reference chassis, subject to change specification without notice. Continuing technical development requires Tadano to retain the right to make specifications, equipment and price changes without notice.

*Some specifications are subject to change



TADANO LTD. (International Division)

4-12, Kamezawa 2-chome, Sumida-ku Tokyo 130-0014, Japan

Phone: 81-3-3621-7750 Fax: 81-3-3621-7785

http://www.tadano.com/ E-mail: info@tadano.com