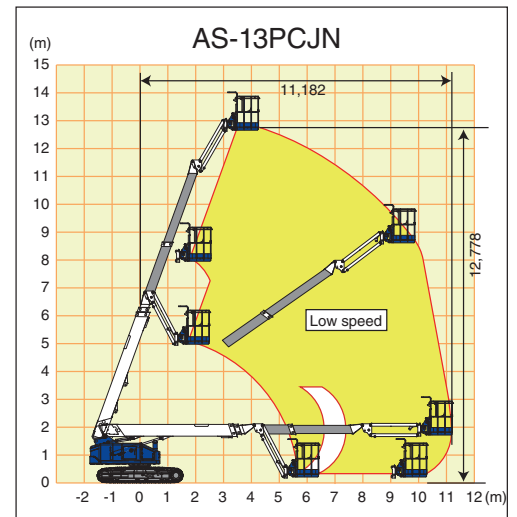
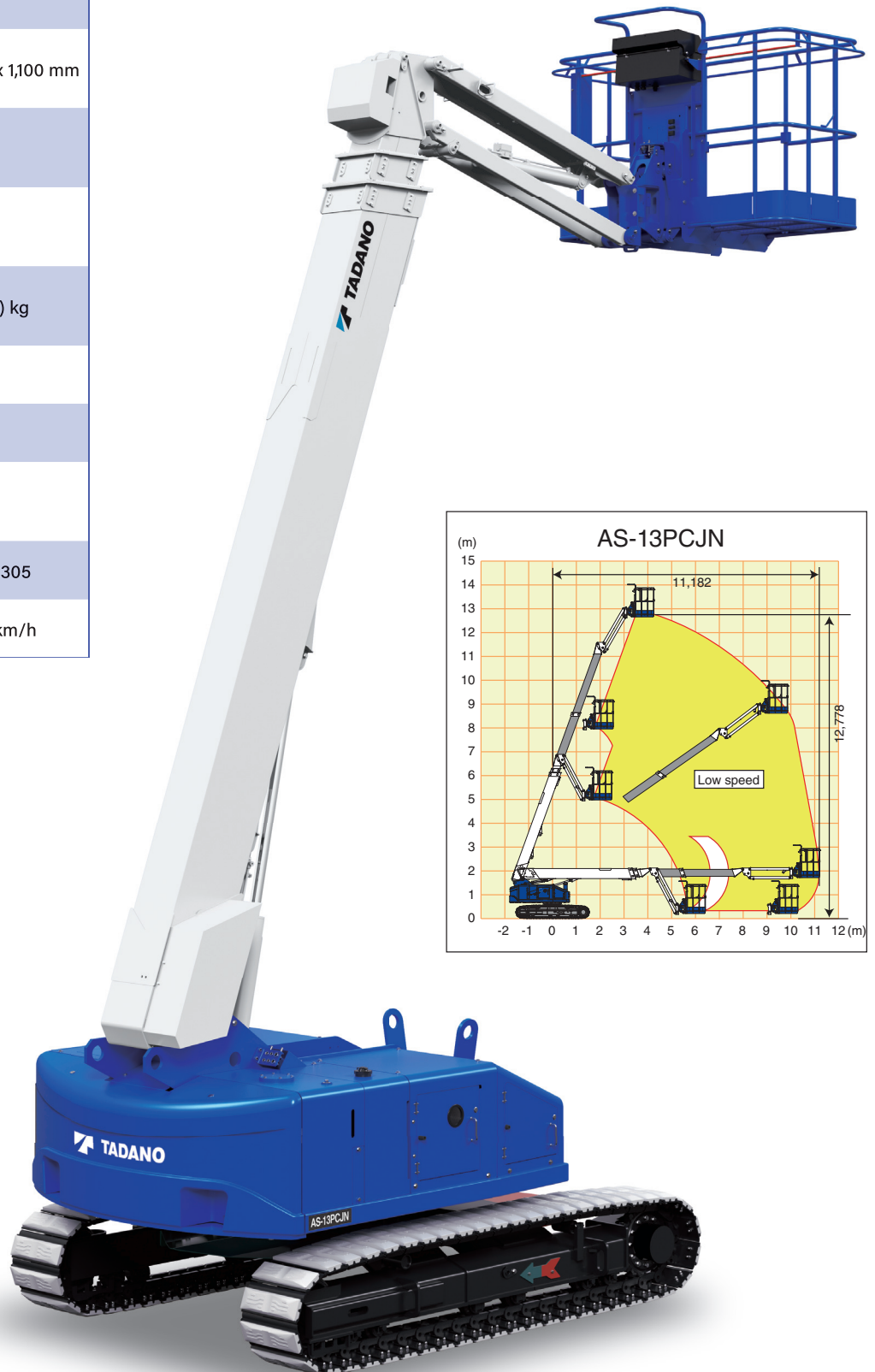


AS-13PCJN (NUS13JN-7b)

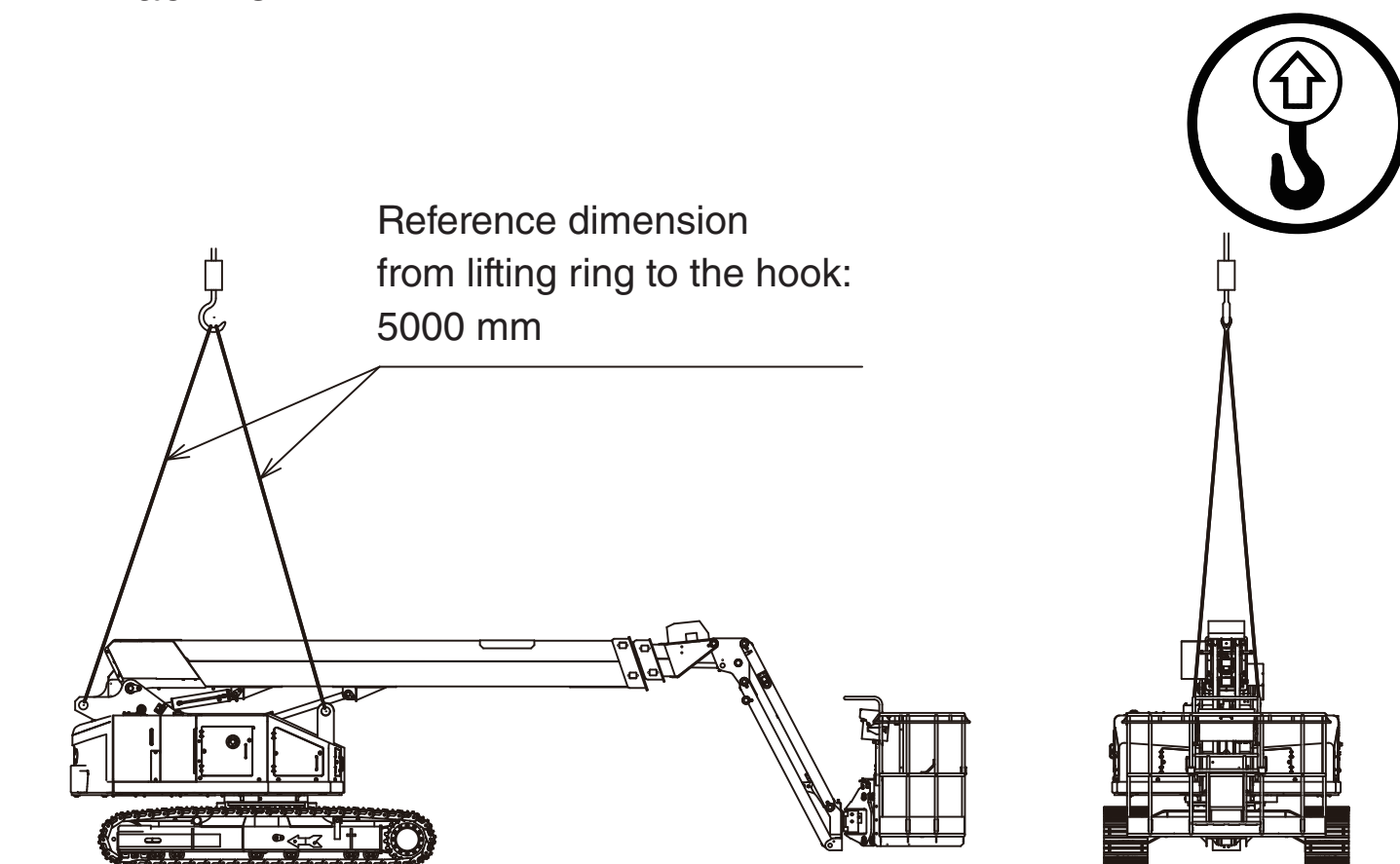
Crawler type
Telescopic boom lift

MODEL	AS-13PCJN
Platform capacity	250 kg
Allowable tilt	5°
Platform dimensions (W x L x H)	1,770 x 730 x 1,100 mm
Platform height (max)	12,778 mm
Horizontal reach (max)	11,182 mm
Machine weight (w/pad)	9,370 (9,610) kg
Overall length	8,266 mm
Overall width	2,250 mm
Overall height (w/pad)	2,305 mm
Engine model	KUBOTA D1305
Travel speeds	0.9/1.5/2.7 km/h



Lifting the machine

- ⚠ Use only qualified rigging to hoist the machine.
- ⚠ Be sure that lifting devices and crane are sufficient to withstand the machine weight.
- Ensure the boom is in stowed position before lifting.
- Determine the center of gravity of the machine as shown below.
- Attach the rigging to designated lifting rings on the machine.
- Insert protective materials where rigging may interfere with the machine.



Tadano Ltd.

Kanda Square 18th Floor, 2-2-1 Kanda-Nishikicho, Chiyoda-ku, Tokyo 101-0054, Japan

Phone: +81-3-6811-7309

info@tadano.com

www.tadano.com