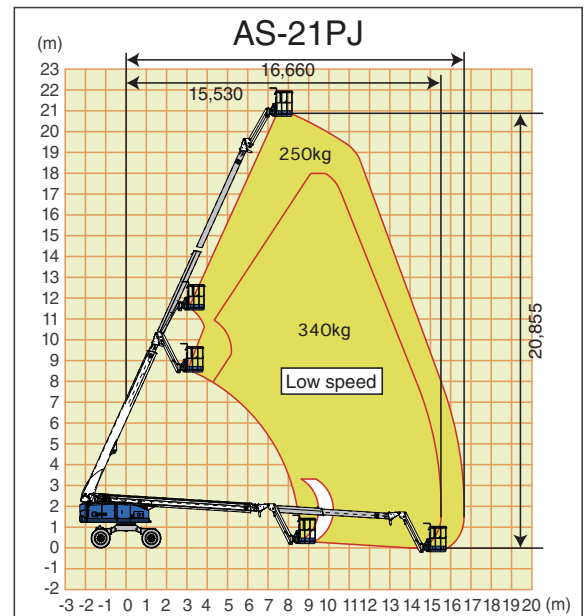
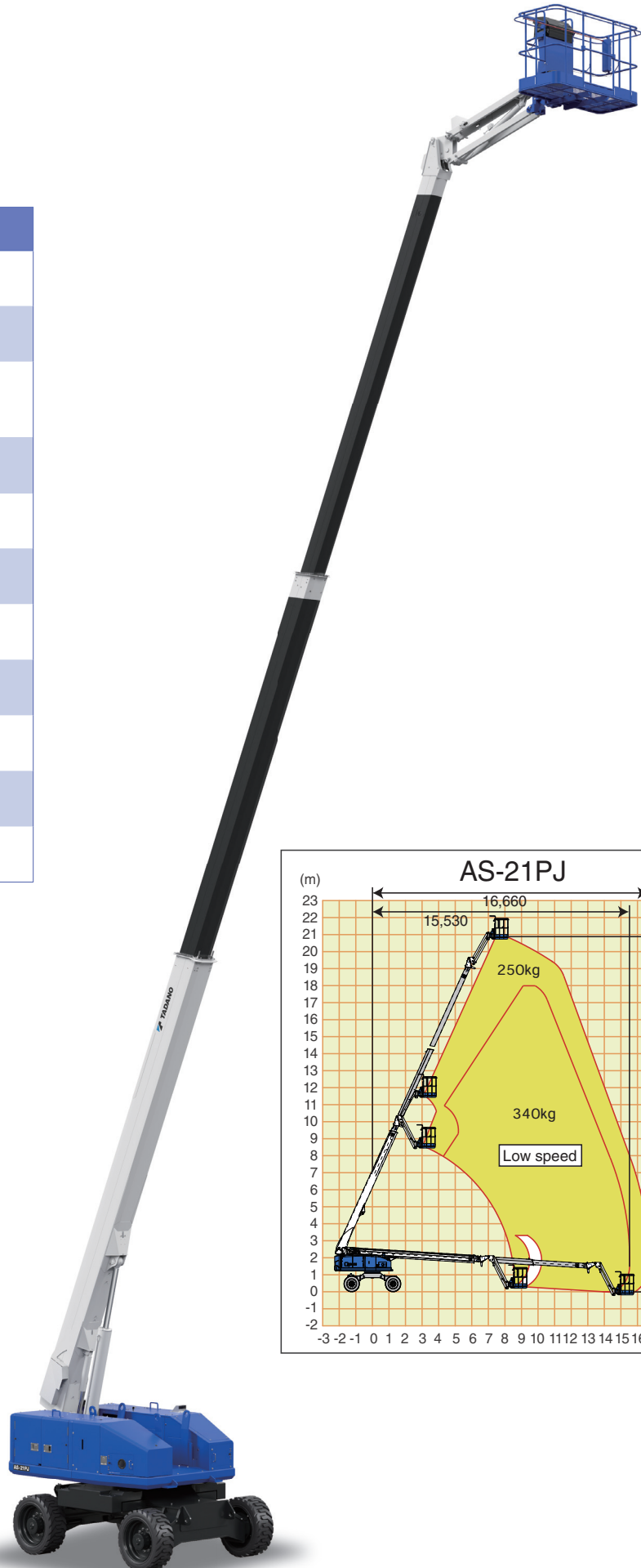


## AS-21PJ

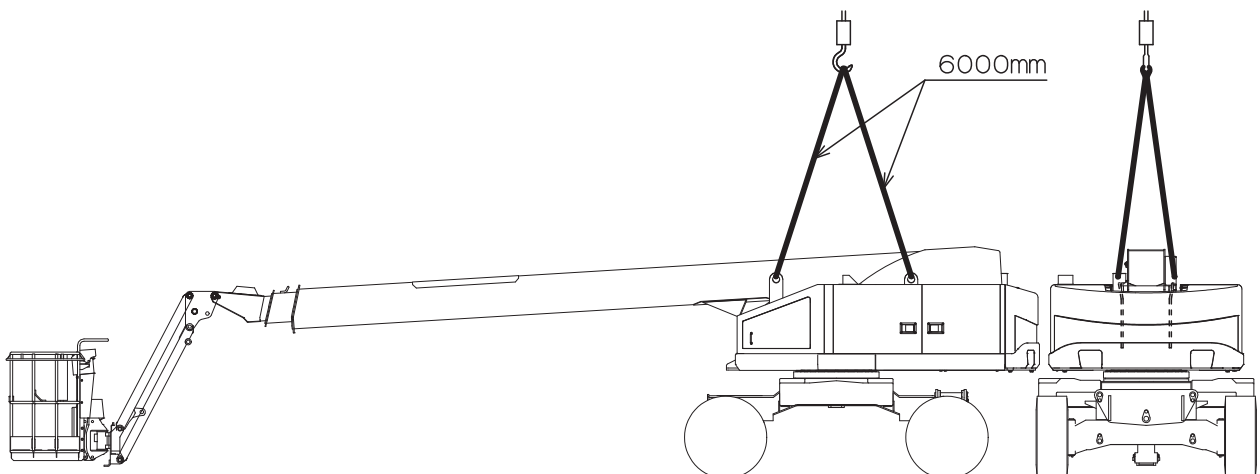
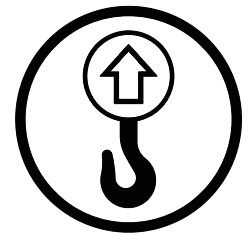
Wheel type  
Telescopic boom lift

TYPE	AS-21PJ
Platform capacity	250 kg / 340 kg
Allowable tilt	5°
Platform dimensions (W x L x H)	1,130 x 730 x 1,000 mm
Platform height (max)	20,855 mm
Horizontal reach	16,660 mm
Machine weight	16,615 kg
Overall length	11,685 mm
Overall width	2,490 mm
Overall height	2,655 mm
Engine model	KUBOTA V2607
Travel speeds	1.2/1.5/4.8 km/h



## Lifting the machine

- ⚠ Use only qualified rigging to hoist the machine.
- ⚠ Be sure that lifting devices and crane are sufficient to withstand the machine weight.
- Ensure the boom is in stowed position before lifting.
- Determine the center of gravity of the machine as shown below.
- Attach the rigging to designated lifting rings on the machine.
- Insert protective materials where rigging may interfere with the machine.



## Tadano Ltd.

Kanda Square 18th Floor, 2-2-1 Kanda-Nishikicho, Chiyoda-ku, Tokyo 101-0054, Japan

Phone: +81-3-6811-7309

[info@tadano.com](mailto:info@tadano.com)

[www.tadano.com](http://www.tadano.com)