

# AT-300CG



**Maximum working height**  
32.4 m

**Maximum basket bottom height**  
30.4 m

**Maximum working radius**  
Approx. 15.5 m

**Maximum basket loading capacity**  
250 kg

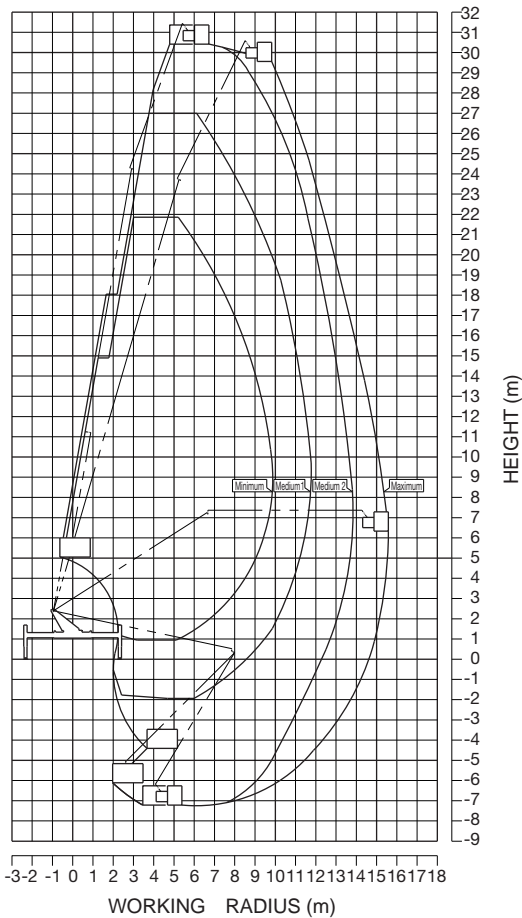
# MODEL: AT-300CG

## SPECIFICATIONS

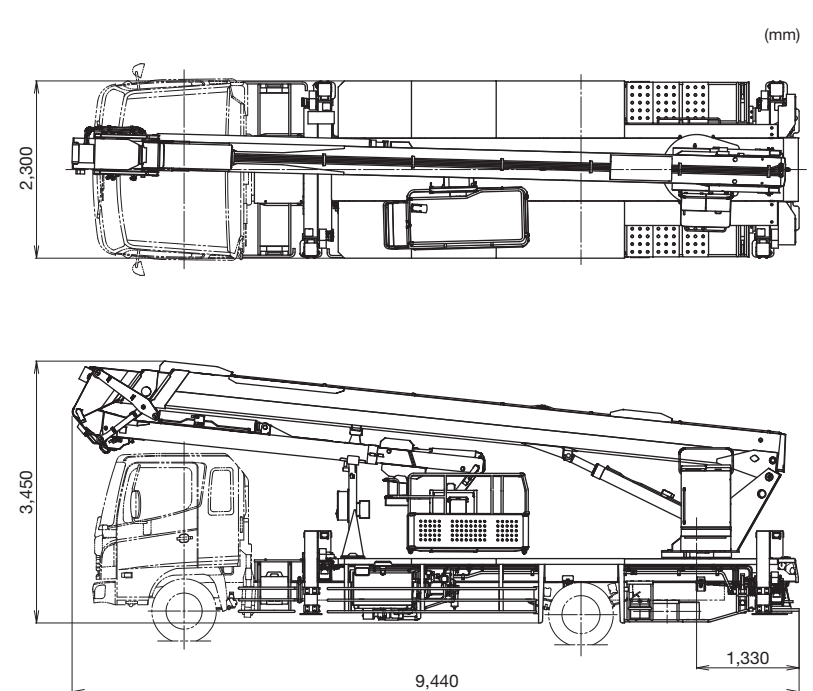
MAX. BASKET BOTTOM HEIGHT	30.4 m
BASKET EQUIPMENT	
Basket	Pipe made
Inside dimensions	0.7 m x 1.5 m x 0.95 m
Capacity	250 kg
Automatic leveling system	By hydraulic cylinders with link.
Slewing angle	313° (Left 93°, Right 220°)
BOOM	3-section full power synchronized telescoping boom of box construction. The synchronization system consists of a double-acting hydraulic cylinder, an extension cable and a retraction cable. Hydraulic cylinder fitted with a holding valve and a pilot check valve.
Fully retracted length	9.00 m + 5.20 m (Articulating boom)
Fully extended length	22.20 m + 7.60 m (Articulating boom)
Extension speed	13.20 m in 65 s 2.40 m in 25 s (Articulating boom)
ELEVATION	By a double-acting hydraulic cylinder, fitted with a holding valve.
Elevation speed	-12o to 80o in 60 s
SLEWING	Hydraulic motor driven through worm reduction gear. 360° continuous in either direction on ball bearing slew ring.
Slewing speed	1.0 min <sup>-1</sup> {rpm}
HYDRAULIC SYSTEM	
Pumps	Gear pump and piston pump.
Control valves	Multiple hydraulic-control valves actuated by switch with integral relief valves, on rotating frame. And electric remote control from basket.
Hydraulic oil tank capacity	Approx. 135 L
Filter	Return line filter

OUTRIGGERS	4 hydraulically operated outriggers. Each outrigger controlled simultaneously or independently from rear side of carrier. Equipped with sight level gauge. Floats mounted integrally with the jacks and retract to within vehicle width. All cylinders fitted with pilot check valves.
Fully extended width	4.66 m
SAFETY DEVICES	<ul style="list-style-type: none"> <li>• Automatic working area limiter (AMC)</li> <li>• Boom profile monitor system (Prevent hitting vehicle by boom and by basket, prevent hitting basket by articulating boom)</li> <li>• Automatic speed control system on boom elevation, slewing and articulating.</li> <li>• Automatic speed reduction and slow stop function on boom elevation, slewing, telescoping and articulating.</li> <li>• Automatic acceleration</li> <li>• Boom vertical/horizontal movement device</li> <li>• Boom and basket automatic stowing</li> <li>• Emergency pump</li> <li>• Emergency stop system</li> <li>• Parking brake warning</li> <li>• PTO connect warning (when drive)</li> <li>• Jack interlock</li> <li>• Boom interlock</li> <li>• Outrigger indicator</li> <li>• Shift lever interlock</li> <li>• Hydraulic cylinder lock valves</li> <li>• Hydraulic safety valves</li> <li>• Level gauge</li> <li>• Guard for operation levers</li> <li>• Foot switch (on basket and slewing frame)</li> </ul>
ACCESSORIES	<ul style="list-style-type: none"> <li>• Hour meter</li> <li>• Rubber blocks (for outriggers)</li> <li>• Chocks</li> </ul>
OPTIONAL EQUIPMENT	<ul style="list-style-type: none"> <li>• Work light (on bucket)</li> <li>• Marker lamp (on outrigger jacks)</li> <li>• Elevation cylinder boots</li> <li>• Wood block (for outrigger)</li> <li>• Grease pump</li> <li>• Safety belt</li> <li>• Tools</li> </ul>

## WORKING RANGE



## DIMENSIONS (Approx.)



NOTE: Some specifications are subject to change.



**Tadano Ltd.**

KANDA SQUARE 18th Floor, 2-2-1 Kanda-Nishikicho,  
Chiyoda-ku, Tokyo 101-0054, Japan  
Phone: +81-3-6811-7309  
info@tadano.com www.tadano.com

