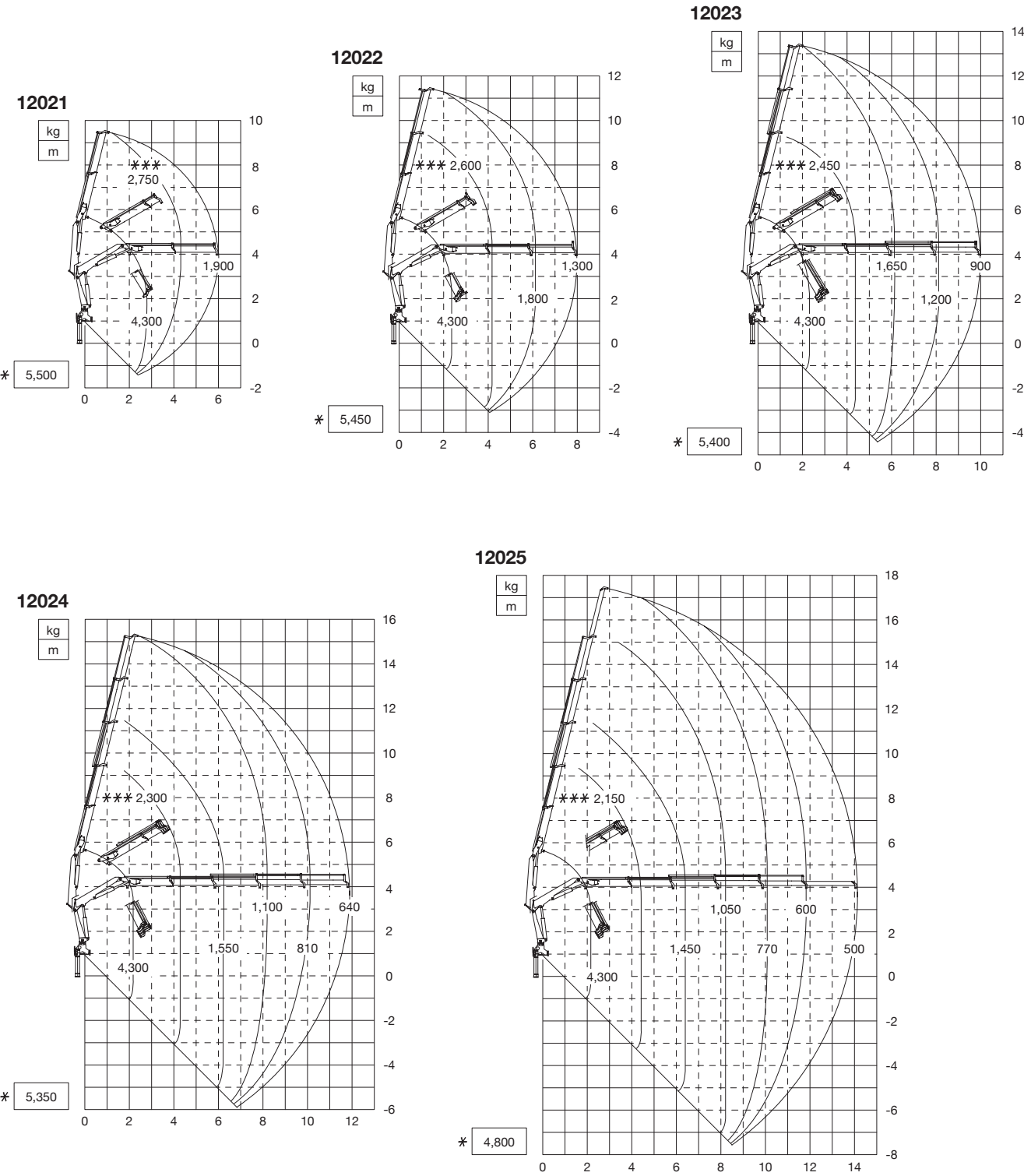


WORKING RANGE

-- Max. Capacity LC ** Max. Capacity with mobile hook *** Max. Capacity from horizontal to vertical
The stated performances can be obtained with 34° inclined main boom



NOTE: Some specifications are subject to change.



TADANO LTD. (International Sales Division)
4-12, Kamezawa 2-chome, Sumida-ku Tokyo 130-0014, Japan
Phone: +81-3-3621-7750 Fax: +81-3-3621-7785
www.tadano.com/ E-mail: info@tadano.com



Continuing technical development requires Tadano to retain the right to make specifications, equipment and price changes without notice.
Some specifications are subject to change.

PM12 2020-12-1
Printed in Japan



Lifting your dreams

KNUCKLE BOOM CRANE



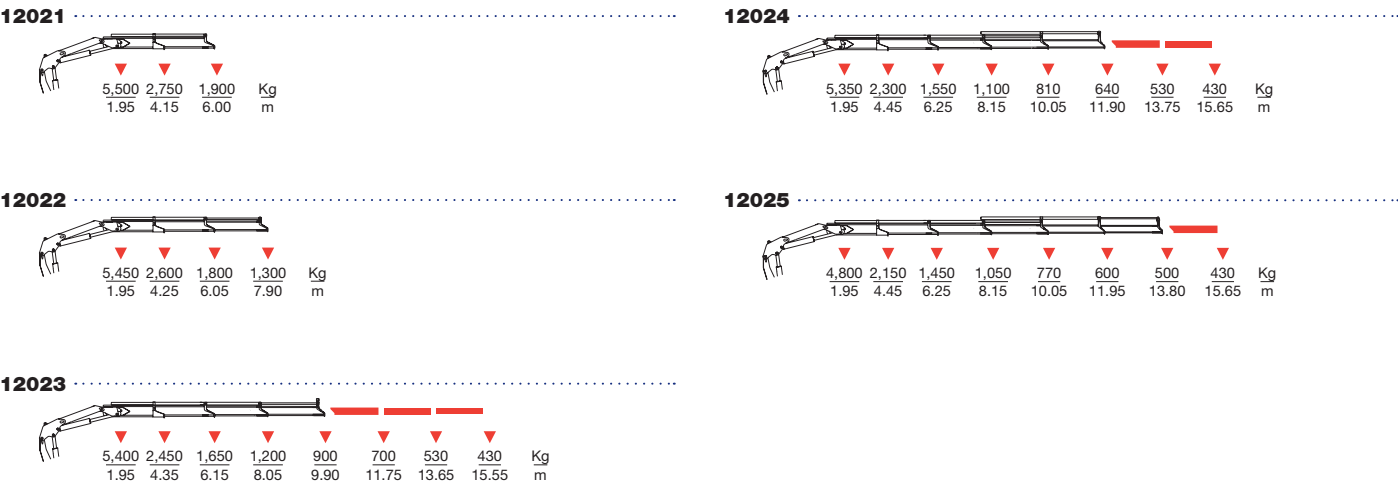
PM12

KNUCKLE
BOOM
CRANE

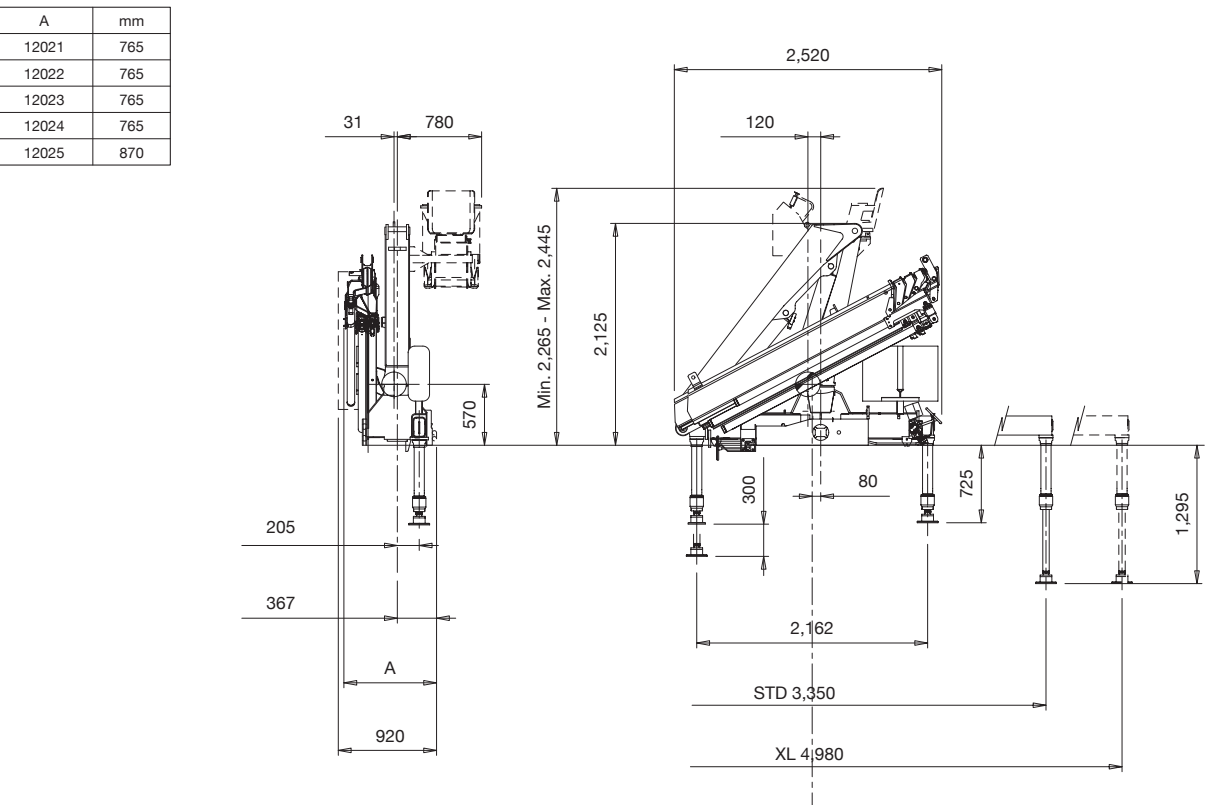




LIFTING CAPACITY & WORK RADIUS



OVERALL DIMENSION



CERTIFICATION

In accordance to the EU safety standards

3 years of warranty on the structural parts

Quality Certificate UNI EN ISO 9001:2008

In accordance to H1-B3 standard

Certified painting system

PM12 TECHNICAL FEATURES

Designed to be at the top in the 12 ton meter class, Series 12 represents the ideal crane for every application. It is standard equipped with manual controls. The hydraulically retractable inner boom LC version is also available. This system facilitates the handling of bulky and heavy loads at short-range, optimizing the loading operations close to the crane column. Available up to 5 hydraulic extensions with a maximum outreach of 14.15 m horizontally and 17.10 m vertically. Additional 2-extensions fly-jib is also available with a maximum outreach of 15.50 m horizontally and 18.40 m vertically.

ACCESSORIES

☒ Included / ☐ Options

<input checked="" type="checkbox"/> Slewing by rack	<input type="checkbox"/> LC configuration	<input type="checkbox"/> Hydraulic winch on crane
<input type="checkbox"/> Slewing ring	<input checked="" type="checkbox"/> Manual pull-out outrigger booms	<input type="checkbox"/> Hydraulic winch on the Jib
<input type="checkbox"/> Single linkage	<input type="checkbox"/> Hydraulic pull-out outrigger booms	<input type="checkbox"/> Fly-Jib
<input type="checkbox"/> Double linkage	<input type="checkbox"/> Extension sequence boom	<input type="checkbox"/> Stand up
<input type="checkbox"/> Multifunction radio control	<input type="checkbox"/> Slewing lock valve	<input type="checkbox"/> Top seat
<input type="checkbox"/> Hydraulic flip up outriggers	<input type="checkbox"/> Proportional hydraulic control valve block compensated	<input type="checkbox"/> Hose reel
<input type="checkbox"/> Manual flip up outriggers	<input type="checkbox"/> External mechanical slewing limiter	<input type="checkbox"/> Hose support for activations
<input type="checkbox"/> Safety Kit for outriggers	<input type="checkbox"/> Oil cooler	<input type="checkbox"/> Stability power system
<input type="checkbox"/> Regenerative kit		

CRANE DATA

	tm	l/min	Mpa	ST	LC
12021	11.4	30	27,5	390	1,380 1,420
12022	11.1	30	27,5	390	1,490 1,520
12023	10.7	30	27,5	390	1,595 1,610
12024	10.4	30	27,5	390	1,690 1,720
12025	9.6	30	27,5	390	1,790 -

TRUCK & CRANE COMBINATION

GVW	12.0 t*	15.0 t	18.0 t	19.0 t
Outriggers	F & R	XL	STD	STD

*Rear outrigger is required.
Notes: Above combination is reference only. Be sure to perform stability test.