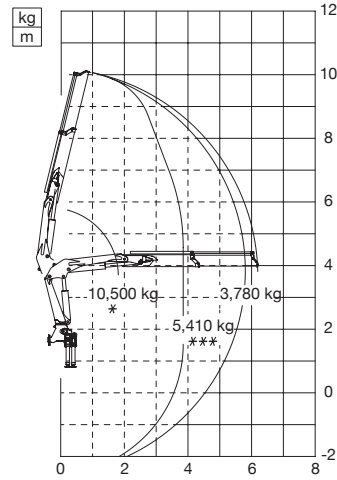


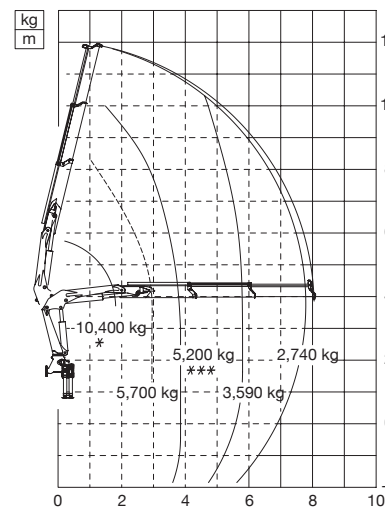
**WORKING RANGE**

-- Max. Capacity LC    \*\* Max. Capacity with mobile hook    \*\*\* Max. Capacity from horizontal to vertical  
The stated performances can be obtained with 35° inclined main boom

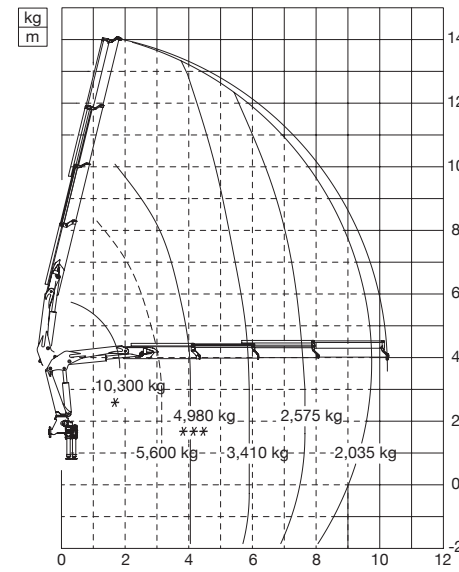
**24021PX**



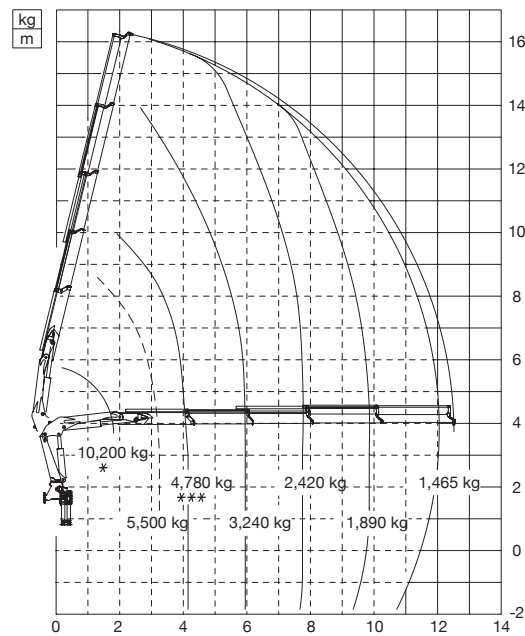
**24022PX**



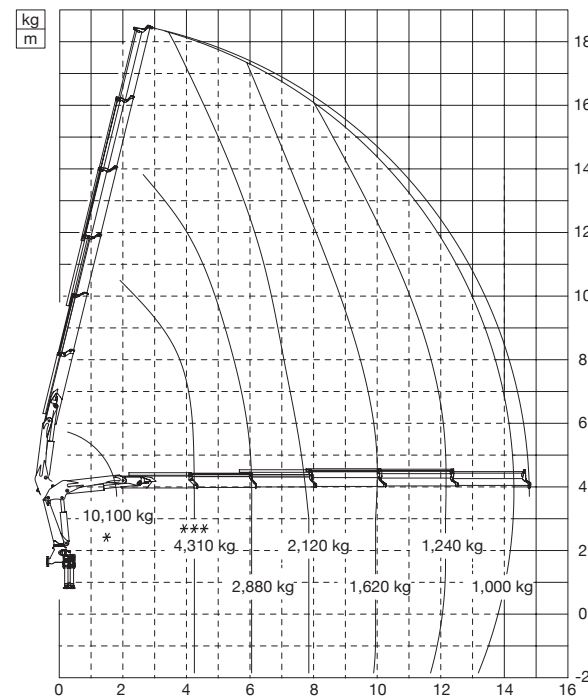
**24023PX**



**24024PX**



**24025PX**

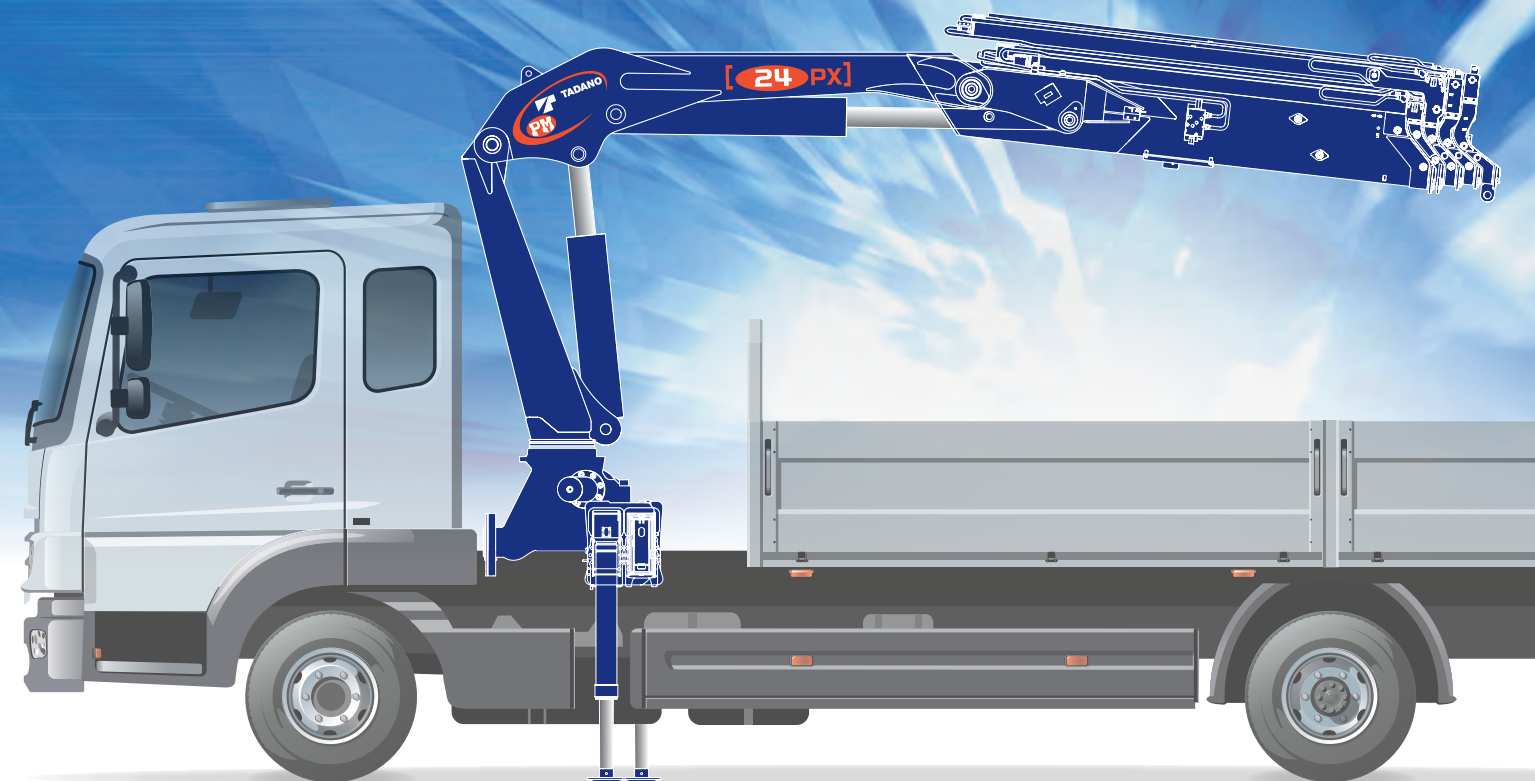


NOTE: Some specifications are subject to change.



# PM24PX

## KNUCKLE BOOM CRANE



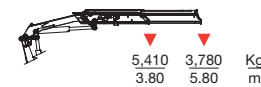


# PM 24 PX

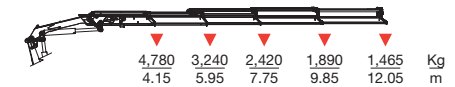
TADANO KNUCKLE BOOM CRANE

## LIFTING CAPACITY & WORK RADIUS

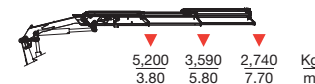
### 24021 PX



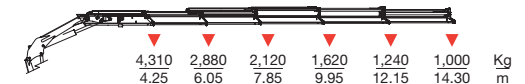
### 24024 PX



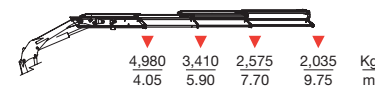
### 24022 PX



### 24025 PX



### 24023 PX



## OVERALL DIMENSION

A		mm	G		mm
STD		2,460	24021PX		965
STD+Swing up		2,490	24022PX		965
XXL		2,480	24023PX		965
XXL+Swing up		2,495	24024PX		965
			24025PX		1,025

B		mm
STD		2,230
STD+Swing up		2,300
XXL		2,230
XXL+Swing up		2,300

B		mm
STD		5,030
STD+Swing up		5,100
XXL		6,550
XXL+Swing up		6,620

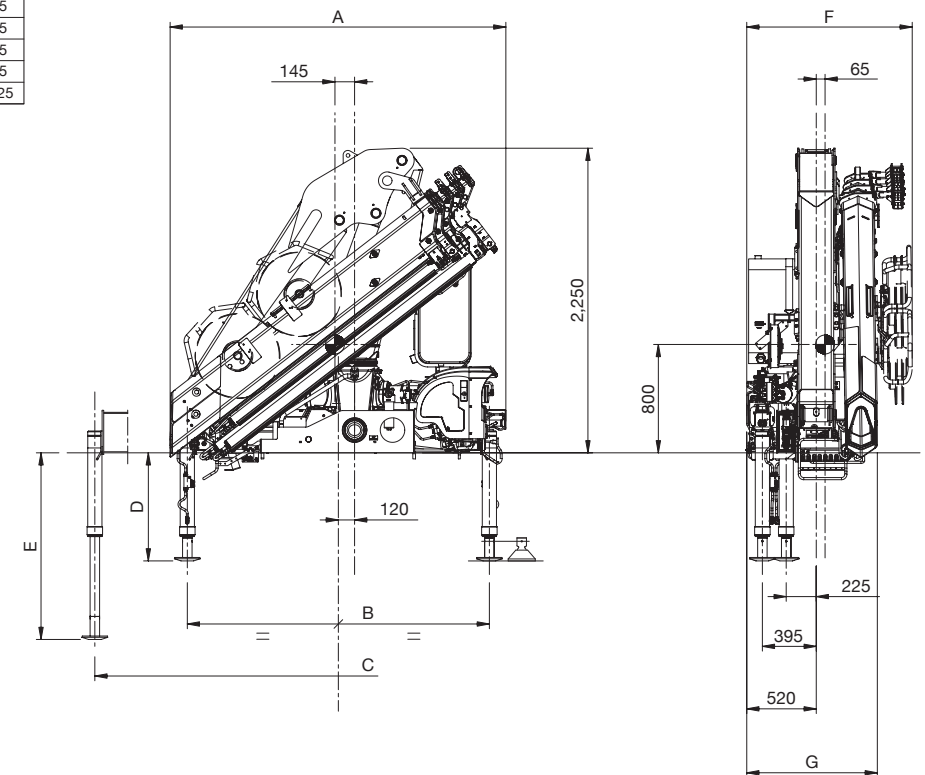
D		mm
Fixed		800
Swing up		895

E		mm
Fixed		1,380
Swing up		1,475

F		
	mm	mm
24021PX	---	---
24022PX	1,235	---
24023PX	1,235	1,205
24024PX	1,235	1,205
24025PX	1,235	1,205



## CERTIFICATION



In accordance to the EU safety standards



3 years of warranty on the structural parts



Quality Certificate UNI EN ISO 9001:2008



In accordance to H1-B3 standard



Certified painting system

## PM24PX TECHNICAL FEATURES

PM 24 PX is equipped as standard with a manual hydraulic distributor, which makes the most difficult loading and unloading operations extremely easy to carry out. The structural simplicity around which the PM 24 PX has been designed does not limit its lifting capacity, which is guaranteed by the exceptional weight/lifting capacity ratio, and it has a high level of operational safety, thanks to the hydraulic movement limiting device.

## ACCESSORIES

● Included / ○ Options

- Slewing by rack
- LC configuration
- Hydraulic winch on crane
- Slewing ring
- Manual pull-out outrigger booms
- Hydraulic winch on the Jib
- Single linkage
- Hydraulic pull-out outrigger booms
- Fly-Jib
- Double linkage
- Extension sequence boom
- Stand up
- Multifunction radio control
- Slewing lock valve
- Top seat
- Hydraulic flip up outriggers
- Proportional hydraulic control valve block compensated
- Hose reel
- Manual flip up outriggers
- External mechanical slewing limiter
- Hose support for activations
- Safety Kit for outriggers
- Oil cooler
- Stability power system
- Regenerative kit

## CRANE DATA

	tm	l/min	Mpa	kg	ST
24021 PX	21.9	80	33,5	400	1,955
24022 PX	21.1	80	33,5	400	2,090
24023 PX	20.2	80	33,5	400	2,235
24024 PX	19.8	80	33,5	400	2,370
24025 PX	18.3	80	33,5	400	2,495

## TRUCK & CRANE COMBINATION

GVW	18.0 t*	19.0 t	26.0 t	32.0 t
Outriggers	F & R	XL	STD	
	STD	XL	Front & Rear	

\*Rear outrigger is required.  
Notes: Above combination is reference only. Be sure to perform stability test.