

TM-ZE550MH

For Medium / Large Size Vehicles



Note: Some specifications are subject to change.



IDEAL Cargo Crane, Tadano ZE

The ZE features all the Tadano Cargo Crane technologies that are recognized the world over. The key development concepts remain: EXCELLENT QUALITY, EASY OPERATION AND EASY MAINTENANCE. The TM-ZE550 with the maximum lifting capacity 5.05 tons has a choice of 3 different lengths of the boom to meet your lifting requirements.

HOOK IN SYSTEM

TM-ZE550 features the "Hook-In" system to further enhance work efficiency. A pull of a lever and the crane hook is stowed automatically. No more manual fixing.



RESPONDING TO OPERATOR'S COMMAND

Equipped with optimally matched, high-performance control valves, the operating levers provide improved



CONTROL LEVER

responsiveness and fine-tuned control. Operation is fast or slow in accordance with operator's command. The stainless rods between the left and right operation levers are provided as standard.

CENTRALIZED CONTROL PANELS

Installed on both sides of the slewing post are the centralized control panels where operating switches and the lifting charts needed for crane operation are grouped together and arranged on a single panel.



LEFT-HAND SIDE



RIGHT-HAND SIDE

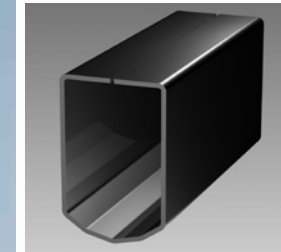
QUICKER WORK WITH ADVANCED OUTRIGGER MECHANISM

The outrigger beams can be easily operated, using a grip to lock/release and extend/retract them. The new lock system prevents the outrigger beams from extending during traveling. A level gauge is provided as standard equipment.



NEW HEPTAGONAL BOOM

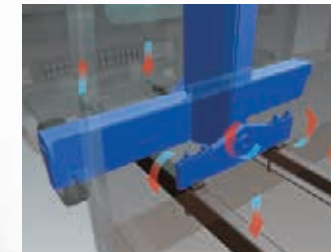
Tadano's unique heptagonal boom is even more strong. And the new boom has a structure of bended one-piece steel plate for lighter boom weight and powerful lifting capability. Special valves enable smooth boom extension and retraction for smoother operation to reduce a shock when telescoping the boom. The cables and sheaves are all internal—for a clean, clutter-free appearance.



THREE-POINT SUPPORT SYSTEM (Equalizer Crane Support)

Tadano's Equalizer Crane Support protects the truck frame from stress.

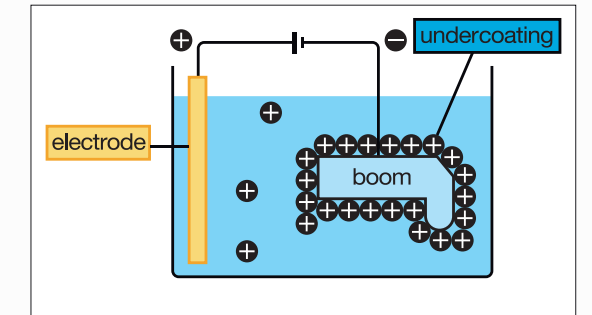
The crane is mounted to the truck chassis with the Equalizer Crane Support that evenly distributes the load to prevent excessive stress concentration at any one point.



CATIONIC ELECTRO-DEPOSITION COATING

The crane is undercoated by Cationic Electro-deposition method.

The parts are dipped in cationic solution, and even the narrow inner booms and frames are thoroughly undercoated.



STRONGER WINCH

The advantages of the enlarged winch drum and plunger motor are evident during start-up when maximum power is required. Re-hoisting with a load on the hook can also be handled with ease.

The winch reduction gear comes equipped with a failsafe automatic brake. From the pitch of the drum grooves to the fitting of the guide sheave, cable winding has been improved in every detail so as to prevent the cable from winding off position.



FULL CIRCLE, CONTINUOUS SLEWING

The newly designed compact slewing post improves performance providing FULL CIRCLE, continuous rotation for more efficient operations.

AUTOMATIC SLEWING LOCK: The boom is mechanically locked at the slewing post base which prevents boom rotation during traveling.



TM-ZE550MH series

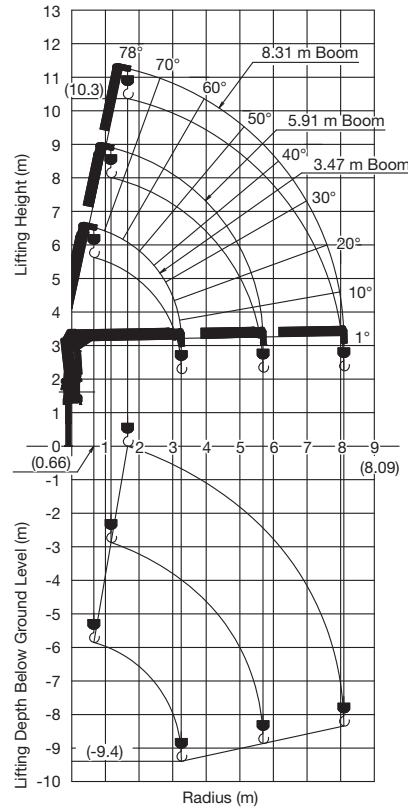
Technical Specifications

Model	TM-ZE553MH	TM-ZE554MH	TM-ZE555MH
CRANE CAPACITY	5,050 kg at 2.5 m (5-part line)		
BOOM	Three-sectioned, fully hydraulic telescoping boom of heptagonal box construction	Four-sectioned, fully powered partly synchronized telescoping boom of heptagonal box construction	Five-sectioned, fully powered partly synchronized telescoping boom of heptagonal box construction
Retracted length	3.47 m	3.55 m	3.77 m
Extended length	8.31 m	10.8 m	13.34 m
Extending speed	4.84 m in 18 s	7.25 m in 21 s	9.57 m in 25 s
Elevation	Elevated by a double-acting hydraulic cylinder		
Raising speed	1° to 78° in 12 s		
Boom point	3 sheaves		
WINCH	Hydraulic motor driven. Spur gear speed reduction, provided with mechanical brake.	Hydraulic motor driven. Spur gear speed reduction, provided with mechanical brake and cable follower.	
Single line pull	9.90 kN(1010 kgf)		
Single line speed	66 m/min (at 4th layer)		
Wire rope (Diameter x length)	8 mm x 67 m	8 mm x 82 m	8 mm x 97 m
Wire rope (Breaking strength)	50.1 kN(5.1 tf)		
Wire rope (Construction)	7 x 7 + 6 x WS(26)		
Hook block	2 sheaves		
HOOK BLOCK STOWING DEVICE	Hook-in (Mechanically stowed beneath boom top portion)		
SLEWING	•Hydraulic motor driven worm gear speed reduction •Continuous 360° full circle slewing on ball bearing slew ring •Automatic slewing lock		
Slewing speed	2.5 min ⁻¹ (rpm)		
OUTRIGGERS	Manually operated beams and hydraulically operated jacks integral with crane frame.		
Extension width	Min. 2,200 mm center to center(2,360 mm outer to outer), Mid. 3,000 mm center to center(3,160 mm outer to outer), Max. 3,800 mm center to center(3,960 mm outer to outer)		
HYDRAULIC SYSTEM	Single gear pump		
Hydraulic pump	Axial piston type for winch. Axial piston type for slewing.		
Control valves	Multiple control valves with integral safety valve		
Oil tank capacity	Approx. 57.6L		
SAFETY DEVICES	•Anti-two-block-device •Boom angle indicator •Load indicator •Load meter •Hook safety latch •Spirit level •Hydraulic safety valves, check valves and holding valves		
OPTIONAL EQUIPMENT	•Emergency hydraulic pump •Outrigger pads •Oil cooler •Rear outriggers (outrigger beam non-extension type) •Large capacity oil tank		
CRANE MASS	Approx. 1,520 kg (Except crane options and mounting parts.)	Approx. 1,640 kg (Except crane options and mounting parts.)	Approx. 1,810 kg (Except crane options and mounting parts.)

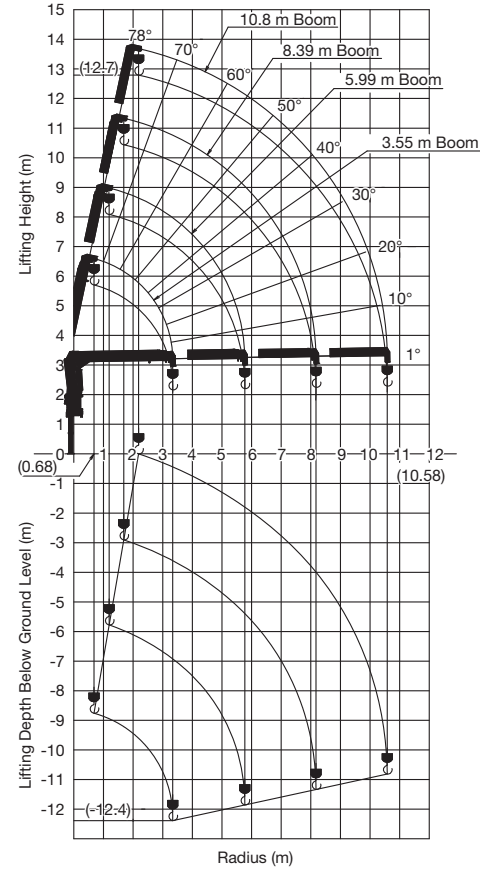
NOTE: Each operating speeds show the value when there is no load conditions and the pump delivery is the following conditions.
 •36 L/min (Slewing speed)
 •60 L/min (BOOM: Extending speed, Raising speed WINCH: Single line speed)

Working Range

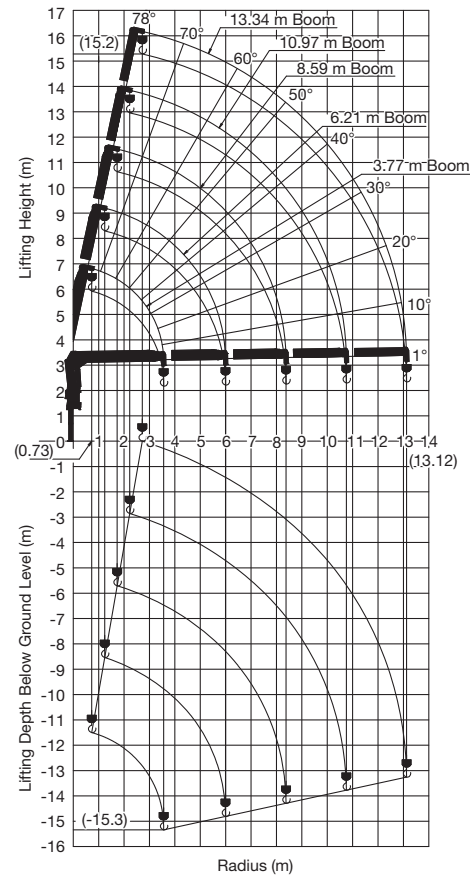
TM-ZE553MH



TM-ZE554MH



TM-ZE555MH

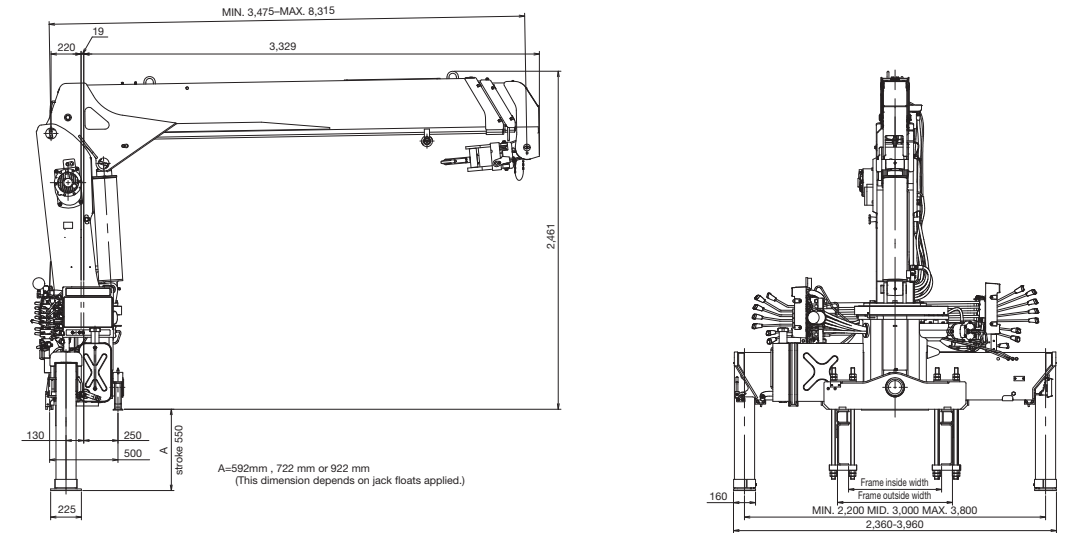


NOTE: The above lifting heights and boom angles are based on a straight (unladen) boom, and allowance should be made for boom deflection obtained under laden conditions.

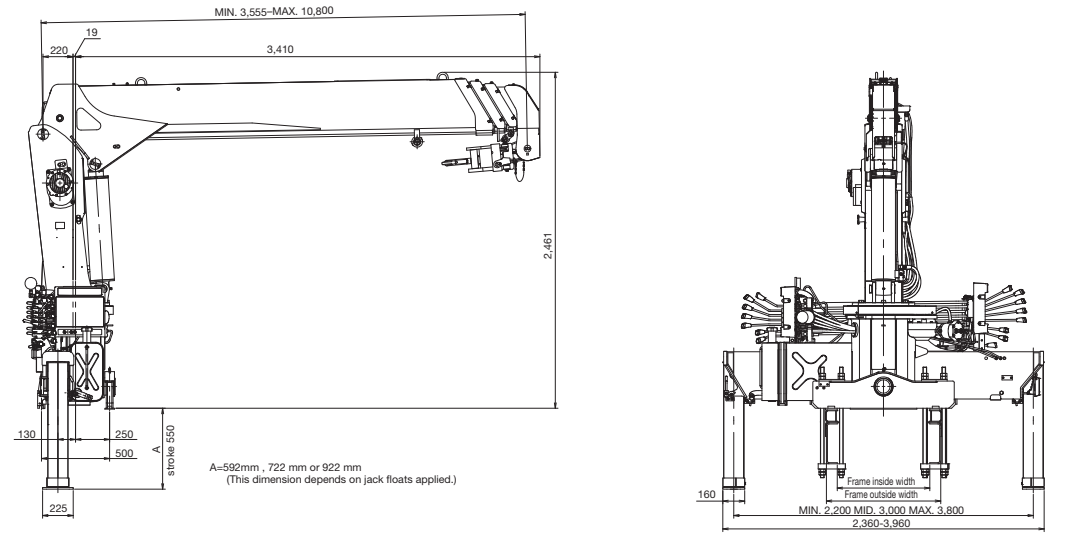
Dimensions

(mm)

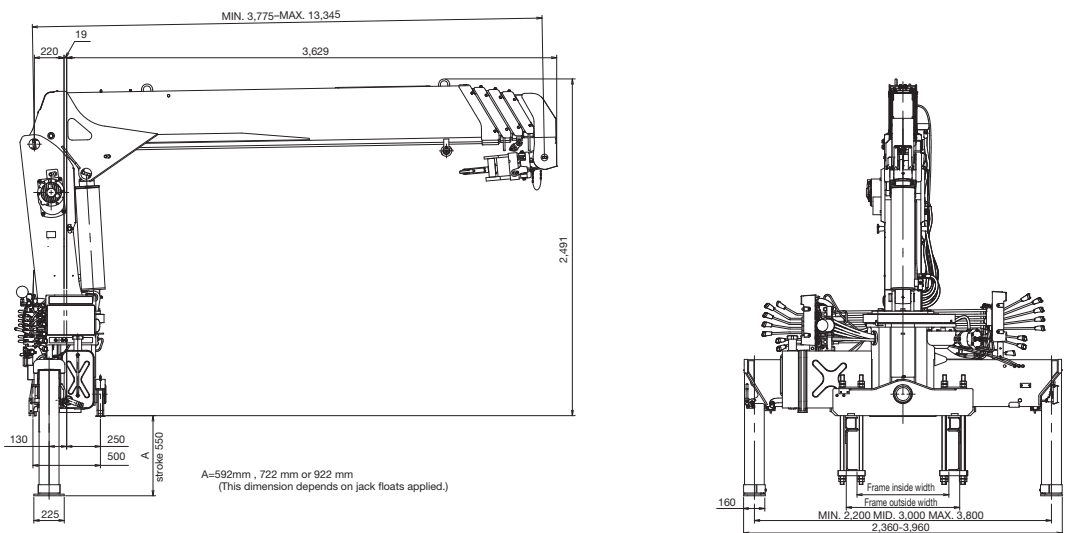
TM-ZE553



TM-ZE554



TM-ZE555



*Actual specifications may differ. 4

3 *Actual specifications may differ.

