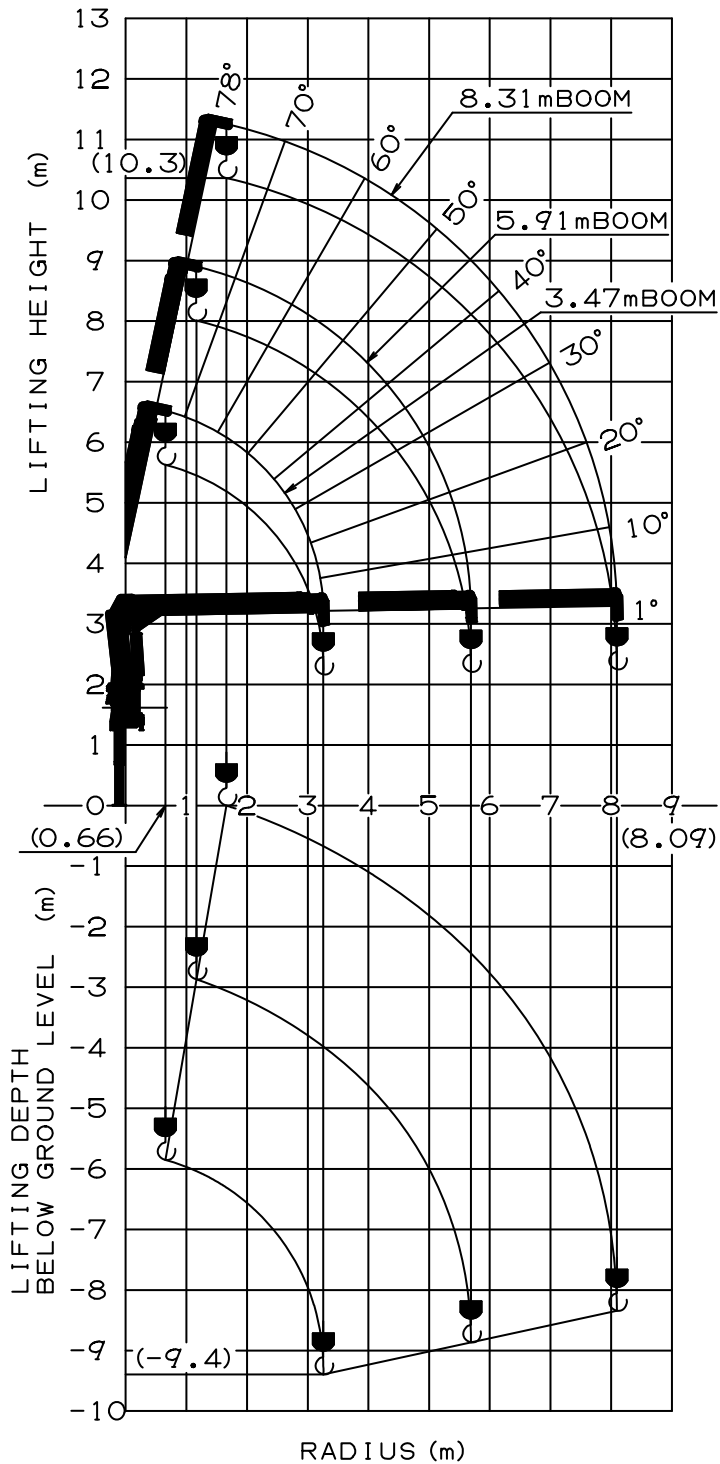
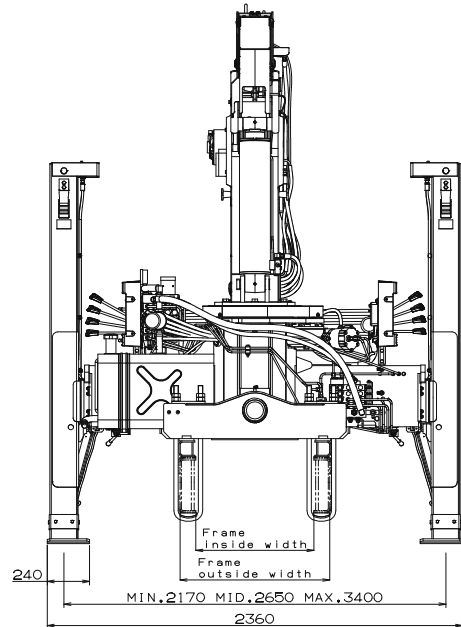
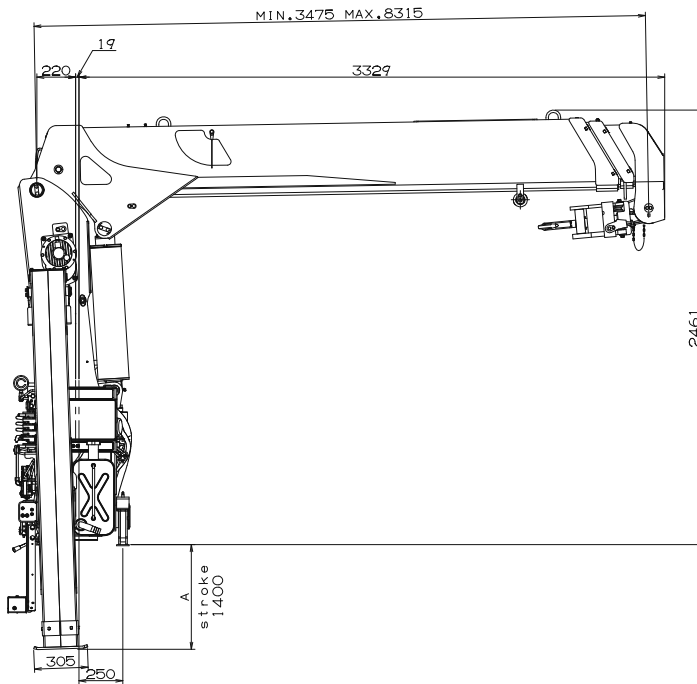


WORKING RANGE



NOTE: The above lifting heights and boom angles are based on a straight (unladen) boom, and allowance should be made for boom deflection obtained under laden conditions.

DIMENSIONS [TM-ZE553SLH]



A= 590mm or 750mm
(This dimension depends on jack floats applied.)

GENERAL DATA FOR SUITABLE TRUCKS

- Gross vehicle mass (including crane mass) --- 15,000 to 25,000 kg
- P.T.O. torque ----- 157 N·m{16 kgf·m} min.
- P.T.O. revolution ----- Approx. 270 to 2,800 min⁻¹{rpm}
- Width for crane mounting ----- Approx. 750 mm min.
- Frame ----- Weight distribution and frame strength should be calculated for each truck
- Frame width range (inside to outside) ----- Approx. 610 to 960 mm
- Frame height (ground to frame top) ----- Approx. 1,235 mm max.
(Height of crane mounting base can be changed by combination of jack floats and crane bases)