

RATED LIFTING CAPACITIES IN KILOGRAMS

Empty Chassis Rated Capacities

Table A

Load Radius	4.2 m Boom		Load Radius	6.86 m Boom		Load Radius	9.5m Boom	
	Outriggers Extended			Outriggers Extended			Outriggers Extended	
	Full	Min.		Full	Min.		Full	Min.
1.8 m and below	8,200	2,910	2.4 m and below	5,970	2,910	2.4 m and below	2,910	2,910
2.4 m	5,970	2,910	3.1 m	4,810	2,510	3.1 m	2,910	2,510
3.1 m	4,810	2,510	3.5 m	4,110	2,060	3.5 m	2,910	2,060
3.5 m	4,110	2,060	4.0 m	3,610	1,710	4.0 m	2,910	1,710
3.95 m	3,660	1,710	4.5 m	2,660	1,410	4.5 m	2,660	1,410
			5.0 m	2,310	1,210	5.0 m	2,310	1,210
			6.0 m	1,760	910	6.0 m	1,760	910
			6.61 m	1,510	760	7.0 m	1,360	710
						8.0 m	1,110	560
						9.25 m	910	460

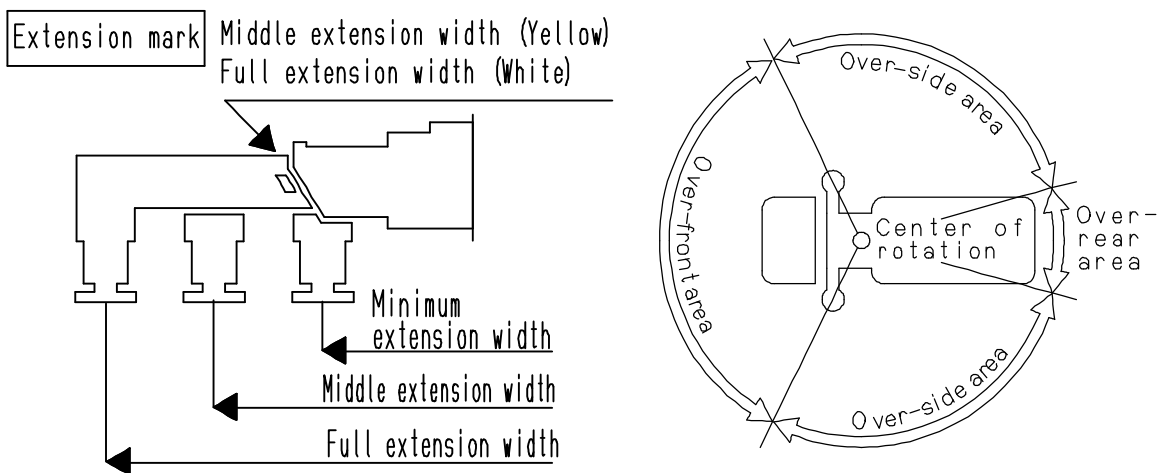
Table D

Load Radius	4.2 m Boom		Load Radius	6.86 m Boom		Load Radius	9.5m Boom	
	Outriggers Extended			Outriggers Extended			Outriggers Extended	
	Full	Min.		Full	Min.		Full	Min.
1.8 m and below	8,200	2,910	2.4 m and below	5,970	2,910	2.4 m and below	2,910	2,910
2.4 m	5,970	2,910	3.1 m	4,810	2,510	3.1 m	2,910	2,510
3.1 m	4,810	2,510	3.5 m	4,110	2,060	3.5 m	2,910	2,060
3.5 m	4,110	2,060	4.0 m	3,610	1,710	4.0 m	2,910	1,710
3.95 m	3,660	1,710	4.5 m	3,210	1,410	4.5 m	2,910	1,410
			5.0 m	2,810	1,210	5.0 m	2,810	1,210
			6.0 m	2,160	910	6.0 m	2,160	910
			6.61 m	1,910	760	7.0 m	1,760	710
						8.0 m	1,460	560
						9.25 m	1,210	460

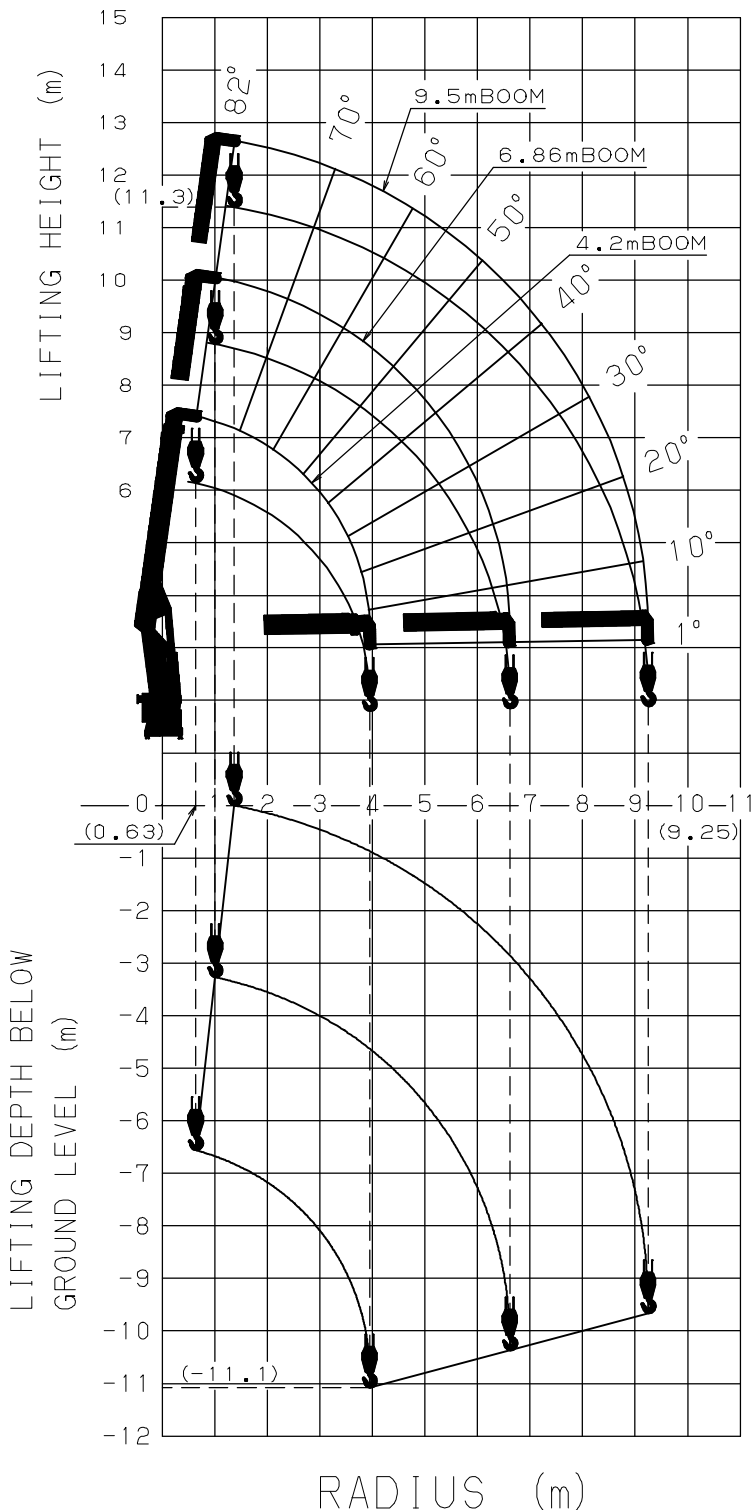
- NOTES : 1. Empty Chassis Rated Capacities in these tables depend on condition that crane is set level on firm level ground.
2. Capacities in these tables include slings and similarly used load handling devices, and they must be added to the mass of the load. They don't, however, include the mass of hook block (90kg).
3. For boom lengths not shown, use the rated lifting capacity of next longer boom.
4. When outriggers are extended to middle extension width, use the rated lifting capacities for outriggers are extended to minimum extension width.
5. Empty Chassis Rated Capacities table A and D depend on the types of chassis.
6. Empty Chassis Rated Capacities are shown for over-side areas and over-rear area. These capacities for over-front area may lowered depending on the types of chassis.
7. Standard number of part lines for Max lifting load is as shown below.

Load per line must not surpass 14.7kN{1,500kgf}.

Max. lifting load	8,200kg	5,970kg or less
No. of part lines	6	4

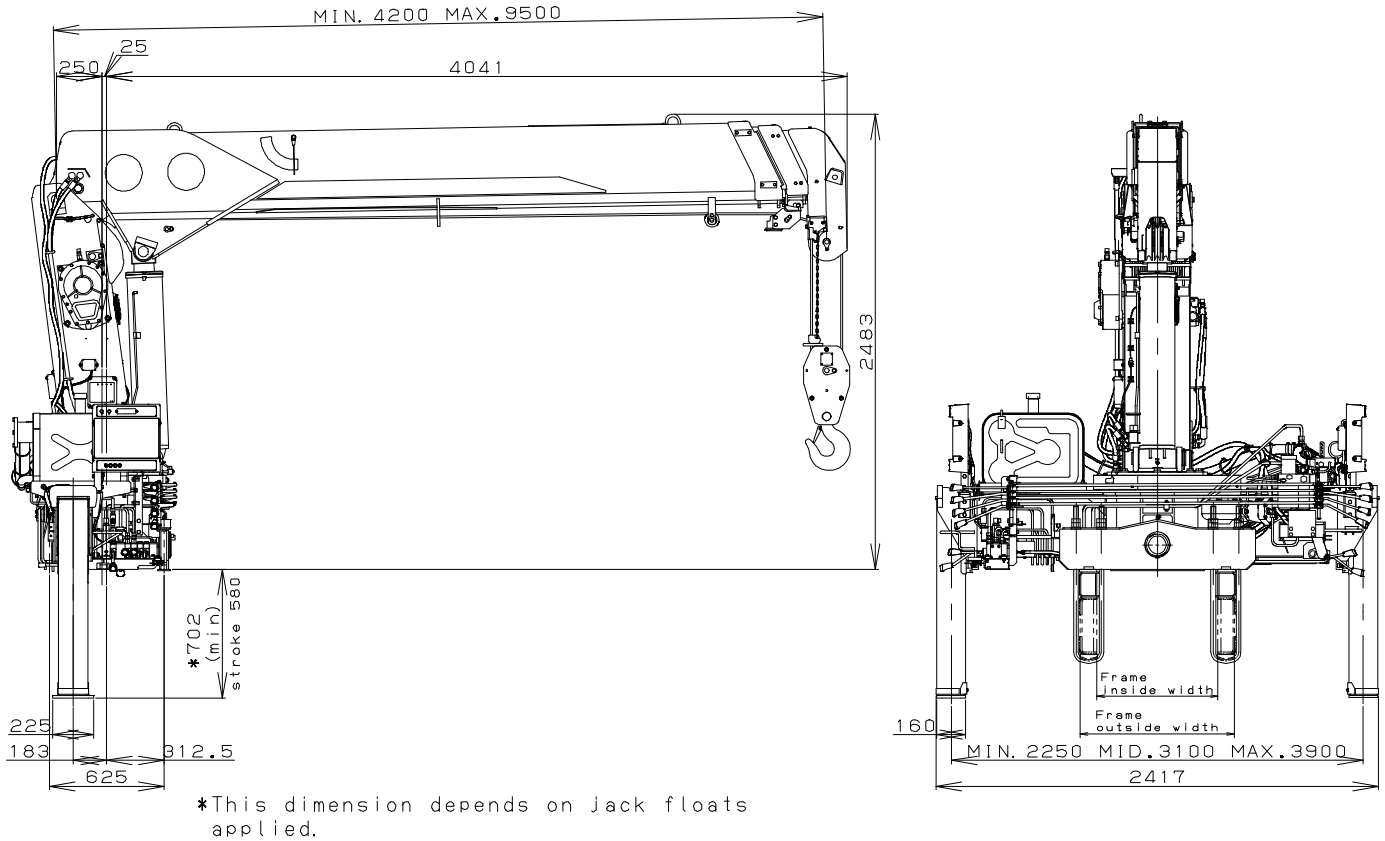


WORKING RANGE



NOTE: The above lifting heights and boom angles are based on a straight (unladen) boom, and allowance should be made for boom deflection obtained under laden conditions.

DIMENSIONS



GENERAL DATA FOR SUITABLE TRUCKS

Gross vehicle mass (including crane mass) -----	20,000 to 25,000 kg
P.T.O. torque -----	255 N-m{26 kgf-m} min.
P.T.O. revolution -----	Approx. 270 to 1,350 min ⁻¹ {rpm}
Width for crane mounting -----	Approx. 1,000 mm min.
Frame -----	Weight distribution and frame strength should be calculated for each truck
Frame width range (inside to outside) -----	Approx. 576 to 953 mm
Frame height (ground to frame top) -----	Approx. 1,055 mm max.
	(Height of crane mounting base can be changed by combination of jack floats and crane bases)