

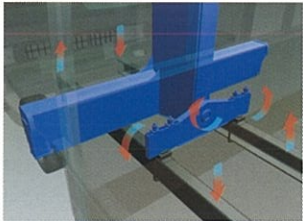
TECHNICAL SPECIFICATIONS

MODEL	TM-ZT403	TM-ZT404	TM-ZT405
CRANE CAPACITY	4,050kg at 2.95m (4-part lines)		4,050kg at 2.85m (4-part lines)
BOOM	Fully hydraulic telescoping boom of pentagonal box construction		Fully powered partly synchronized telescoping boom of pentagonal box construction
Sections	3	4	5
Length	3.47m-8.31m	3.55m-10.8m	3.77m-13.34m
Extending Speed	4.84m / 18s	7.25m / 21s	9.57m / 25s
Elevation Range/Speed	1° to 78° / 12s		
Max. Hook Height*	Approx. 10.2m*	Approx. 12.7m*	Approx. 15.2m*
Max. Load Radius*	8.09m*	10.58m*	13.12m*
WINCH	Hydraulic motor driven. Spur gear speed reduction, provided with mechanical brake.		Hydraulic motor driven. Spur gear speed reduction, provided with mechanical brake and cable follower.
Max. Single Line Pull	9.92kN {1,012kgf}		
Max. Single Line Speed	66m/min. (at 4th layer)		
Wire rope (Diameter x length)	8mm x 56m	8mm x 69m	8mm x 81m
SWING	Hydraulic motor driven. Worm gear speed reduction. Continuous 360° full circle swing on ball bearing slew ring. Automatic swing lock.		
Speed	2.5 min⁻¹{rpm}		
OUTRIGGERS	Manually extended sliders and hydraulically extended jacks. Integral with crane frame. Power up and down.		
Extended Width	Max. : 3.8m Mid. : 3.0m Min. : 2.20m		
HYDRAULIC SYSTEM	Single gear pump		
Pump	Multiple control valves with integral safety valve		
Control Valves			
STANDARD SAFETY EQUIPMENT	•Load meter •Load indicator •Over-winding alarm •Hook safety latch •Level gauge •Hydraulic safety valves, check valves and holding valves		
SUITABLE TRUCKS	Gross vehicle mass 12,000kg or more		

TECHNICAL SPECIFICATION NOTE:
1. Operating speeds of the crane are guaranteed under the conditions that the pump delivery is 60L/min.
2. *No allowance included for boom deflection under loaded conditions.

Three-Point Support System (Equalizer Crane Support)

The equalizer crane support system protects the chassis frame by evenly distributing the load applied to the frame during vehicle travel to prevent excessive stress concentration at any one point.



Quicker Work With Outrigger Mechanism

The outrigger beams can be easily operated, by a finger to lock or release and extend or retract. Further more safety, new lock system prevents the outrigger from extending during vehicle travel. A level gauge is provided as standard equipment.



NEW LOCK SYSTEM



Lifting your dreams

TADANO (Thailand) Co., Ltd.
500/70 Moo.2, T.Tasit, A.Pluak Daeng, Rayong 21140, Thailand
Phone:+66-33-010-939 Fax: +66-33-010-940

TADANO LTD. (International Division)
4-12, Kamezawa 2-chome, Sumida-ku Tokyo 130-0014, Japan
Phone: 81-3-3621-7750 Fax: 81-3-3621-7785
<http://www.tadano-global.com> E-mail: tdnihq@tadano.co.jp

2013-08
Printed in Thailand



CARGO CRANE

TM-ZT400



TM-ZT403

RATED LIFTING CAPACITIES - Empty Chassis

3.47 / 5.91m boom									
Load Radius (m)	2.95 and below	3.8	4.1	4.5	5.0	5.69			
Rated Lifting Capacity (kg)	4,050	3,130	2,930	2,580	2,280	1,950			
8.31m boom									
Load Radius (m)	3.8 and below	4.1	4.5	5.0	5.5	6.0	6.5	7.0	7.5
Rated Lifting Capacity (kg)	3,130	2,930	2,580	2,280	2,030	1,830	1,680	1,550	1,430

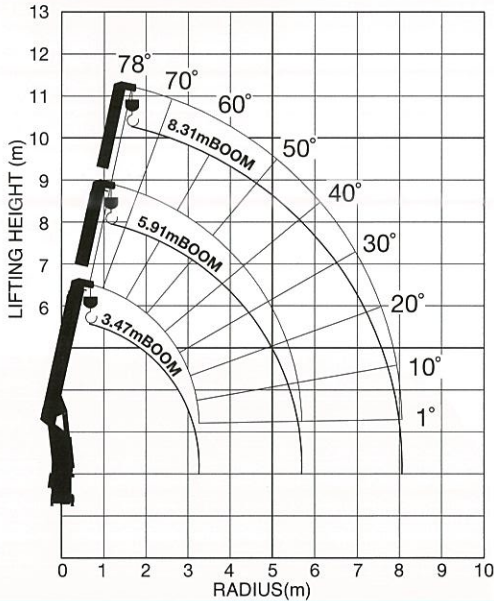
RATED LIFTING CAPACITIES NOTE:

The mass of hook (30kg), slings and all similarly used load handling devices must be added to the mass of the load.

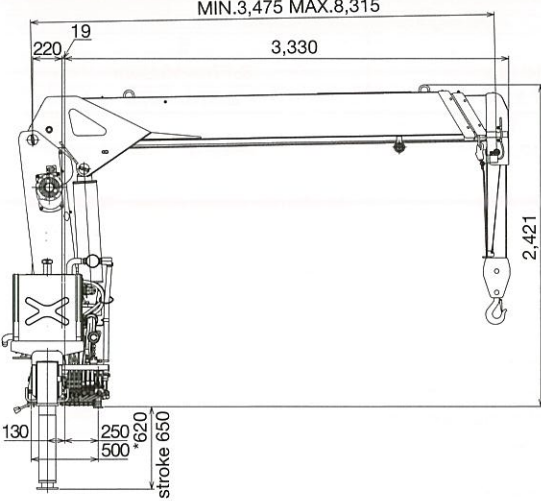
WORKING RANGE NOTE:

Lifting heights and boom angles are based on a straight (unloaded) boom, and allowance should be made for boom deflection under loaded conditions.

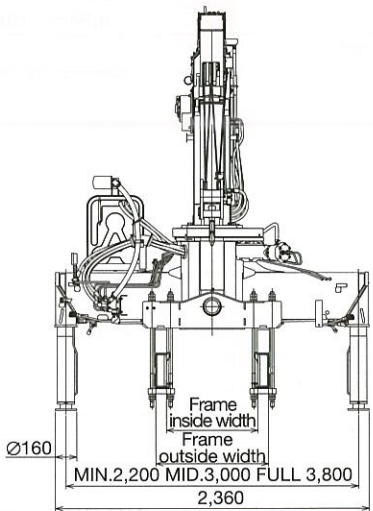
WORKING RANGE



DIMENSION



*This dimension depends on jack floats applied.



TM-ZT404

RATED LIFTING CAPACITIES - Empty Chassis

3.55m / 5.99m boom										
Load Radius (m)	2.95 and below		3.8		4.1		4.5		5.0	5.77
Rated Lifting Capacity (kg)	4,050		3,130		2,930		2,580		2,280	1,900
8.39m boom										
Load Radius (m)	3.8 and below	4.1	4.5	5.0	5.5	6.0	6.5	7.0	7.5	8.17
Rated Lifting Capacity (kg)	3,130	2,930	2,580	2,280	2,030	1,830	1,680	1,550	1,430	1,280
10.8m boom										
Load Radius (m)	4.5 and below	5.0	6.0	7.0	8.0	9.0	10.0			10.58
Rated Lifting Capacity (kg)	2,030	1,830	1,480	1,230	1,080	980	880			830

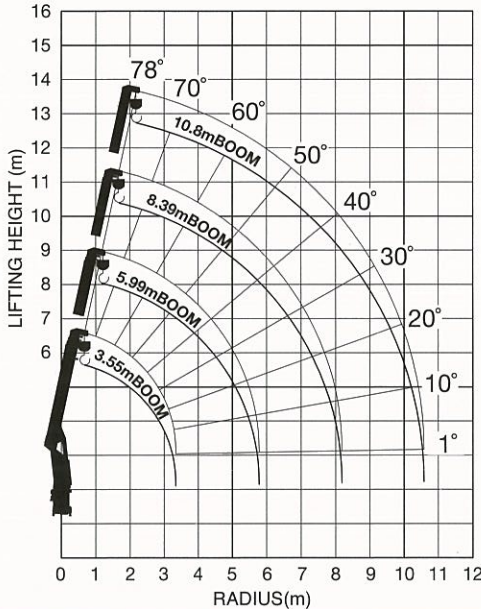
RATED LIFTING CAPACITIES NOTE:

The mass of hook (30kg), slings and all similarly used load handling devices must be added to the mass of the load.

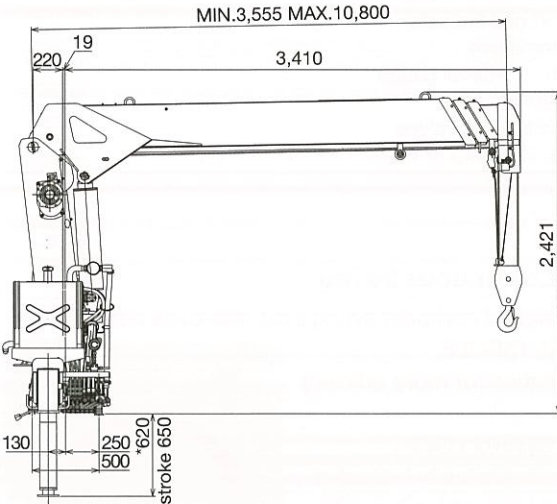
WORKING RANGE NOTE:

Lifting heights and boom angles are based on a straight (unloaded) boom, and allowance should be made for boom deflection under loaded conditions.

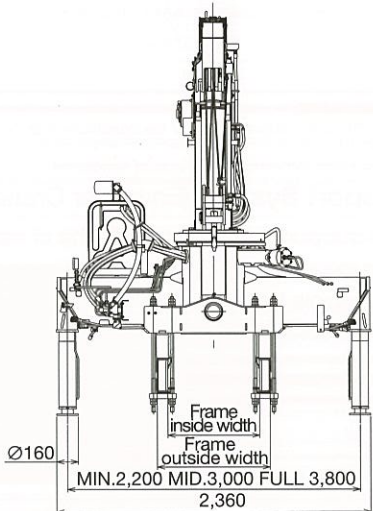
WORKING RANGE



DIMENSION



*This dimension depends on jack floats applied.



TM-ZT405

RATED LIFTING CAPACITIES - Empty Chassis

3.77m / 6.21m boom									
Load Radius (m)	2.85 and below	3.6	3.9	4.5	5.0	5.5	5.99		
Rated Lifting Capacity (kg)	4,050	3,180	2,930	2,430	2,130	1,880	1,650		
8.59m boom									
Load Radius (m)	3.6 and below	3.9	4.5	5.0	5.5	6.0	6.5	7.0	7.5
Rated Lifting Capacity (kg)	3,130	2,930	2,430	2,130	1,880	1,650	1,480	1,350	1,230
10.97m boom									
Load Radius (m)	4.5 and below	5.0	6.0	7.0	8.0	9.0	10.0	10.75	
Rated Lifting Capacity (kg)	2,030	1,830	1,480	1,230	1,030	880	780	730	
13.34m boom									
Load Radius (m)	5.0 and below	6.0	7.0	8.0	9.0	10.0	11.0	12.0	13.12
Rated Lifting Capacity (kg)	1,330	1,100	950	830	730	650	600	550	500

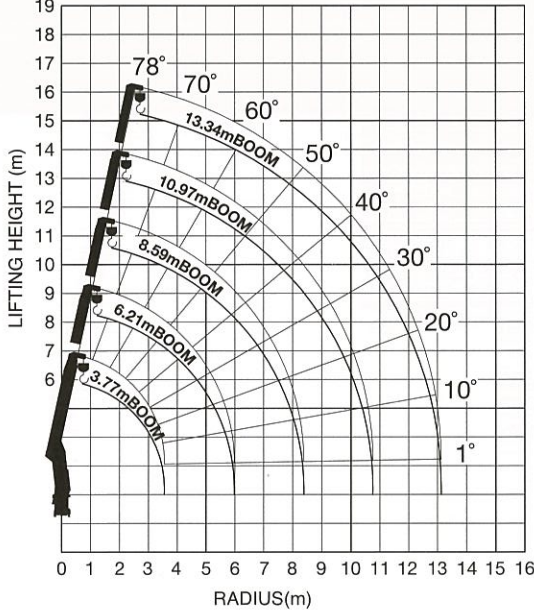
RATED LIFTING CAPACITIES NOTE:

The mass of hook (30kg), slings and all similarly used load handling devices must be added to the mass of the load.

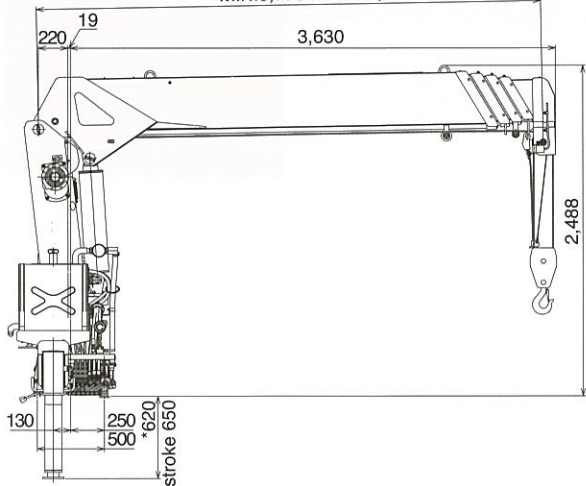
WORKING RANGE NOTE:

Lifting heights and boom angles are based on a straight (unloaded) boom, and allowance should be made for boom deflection under loaded conditions.

WORKING RANGE



DIMENSION



*This dimension depends on jack floats applied.

