

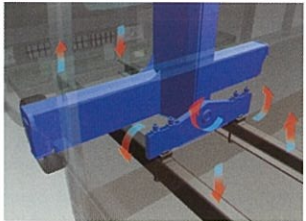
TECHNICAL SPECIFICATIONS

| MODEL                         | TM-ZT633  | TM-ZT634  | TM-ZT635  |
|-------------------------------|---|---|---|
| CRANE CAPACITY                | 6,350kg at 1.85m (6-part lines)   |   | 6,350kg at 1.8m (6-part lines)  |
| BOOM                          | Fully hydraulic telescoping boom of pentagonal box construction   | Fully powered partly synchronized telescoping boom of pentagonal box construction |   |
| Sections                      | 3   | 4   | 5   |
| Length                        | 3.47m-8.31m   | 3.55m-10.8m   | 3.77m-13.34m  |
| Extending Speed               | 4.84m / 18s   | 7.25m / 21s   | 9.57m / 25s   |
| Elevation Range/Speed         | 1° to 78° / 12s   |   |   |
| Max. Hook Height*             | Approx. 10.2m*  | Approx. 12.7m*  | Approx. 15.2m*  |
| Max. Load Radius*             | 8.09m*  | 10.58m*   | 13.12m*   |
| WINCH                         | Hydraulic motor driven.<br>Spur gear speed reduction,<br>provided with mechanical brake.  |   | Hydraulic motor driven. Spur gear<br>speed reduction, provided with<br>mechanical brake and cable follower. |
| Max. Single Line Pull         | 10.37kN {1,058kgf}  |   |   |
| Max. Single Line Speed        | 66m/min. (at 4th layer)   |   |   |
| Wire rope (Diameter x length) | 8mm x 56m   | 8mm x 69m   | 8mm x 81m   |
| SWING                         | Hydraulic motor driven.<br>Worm gear speed reduction.<br>Continuous 360° full circle swing on<br>ball bearing slew ring.<br>Automatic swing lock.     |   |   |
| Speed                         | 2.5 min <sup>-1</sup> {rpm}   |   |   |
| OUTRIGGERS                    | Manually extended sliders and<br>hydraulically extended jacks.<br>Integral with crane frame. Power up and down.                                       |   |   |
| Extended Width                | Max. : 3.8m Mid. : 3.0m Min. : 2.20m  |   |   |
| HYDRAULIC SYSTEM              | Single gear pump  |   |   |
| Pump                          | Multiple control valves with integral safety valve  |   |   |
| Control Valves                | •Load meter •Load indicator<br>•Over-winding alarm<br>•Hook safety latch •Level gauge<br>•Hydraulic safety valves,<br>check valves and holding valves |   |   |
| STANDARD SAFETY EQUIPMENT     |   |   |   |
| SUITABLE TRUCKS               | Gross vehicle mass 12,000kg or more   |   |   |

**TECHNICAL SPECIFICATION NOTE:**  
1. Operating speeds of the crane are guaranteed under the conditions that the pump delivery is 60L/min.  
2. \*No allowance included for boom deflection under loaded conditions.

**Three-Point Support System (Equalizer Crane Support)**

The equalizer crane support system protects the chassis frame by evenly distributing the load applied to the frame during vehicle travel to prevent excessive stress concentration at any one point.



**Quicker Work With Outrigger Mechanism**

The outrigger beams can be easily operated, by a finger to lock or release and extend or retract. Further more safety, new lock system prevents the outrigger from extending during vehicle travel. A level gauge is provided as standard equipment.



NEW LOCK SYSTEM



**Full Circle, Continuous Swing**

The newly designed compact swing post improves performance providing FULL CIRCLE, continuous rotation for more efficient operations.

**AUTOMATIC SWING LOCK:**  
The boom is mechanically locked at the swing post base which prevents boom rotation during vehicle travel.



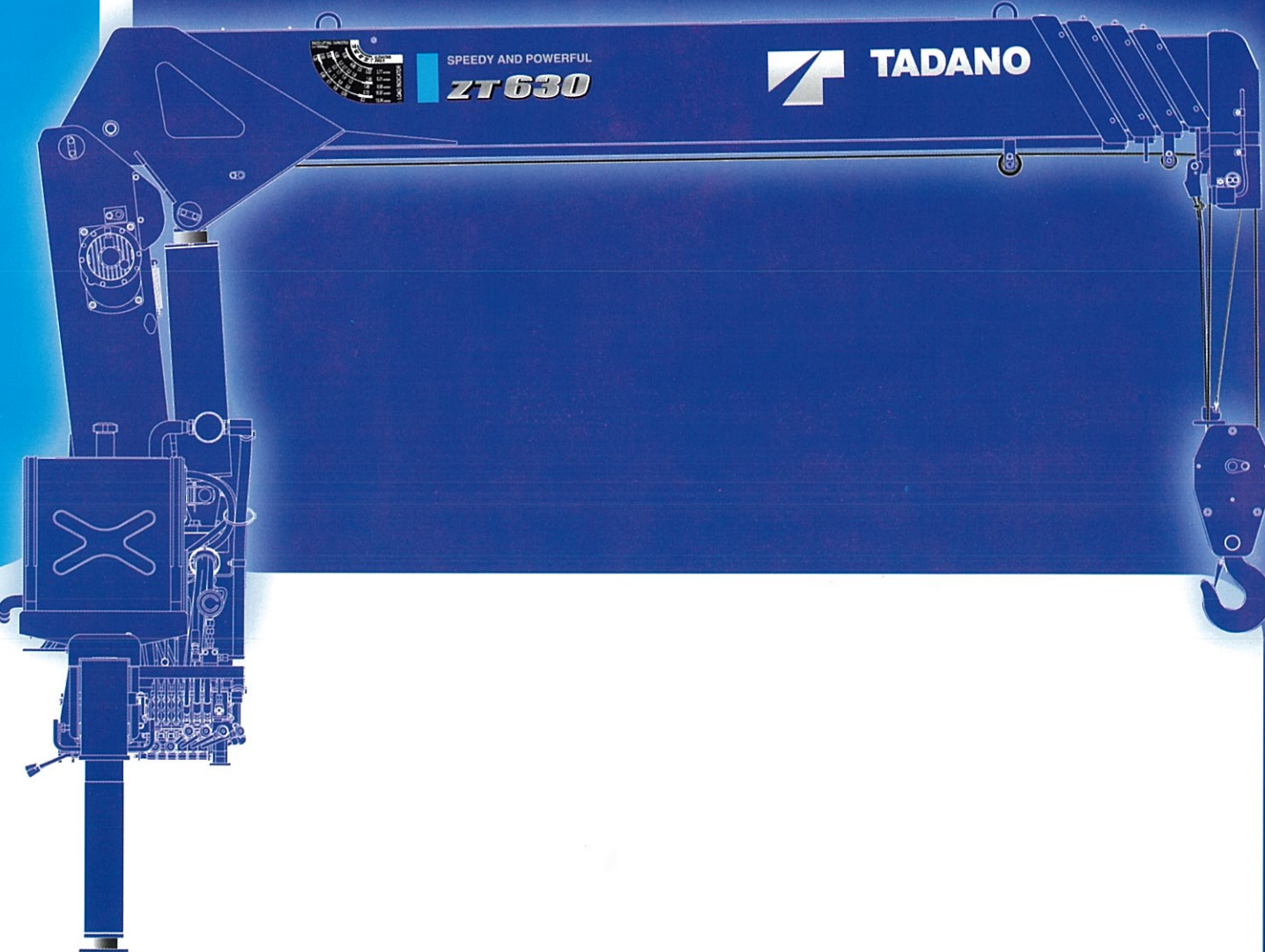
**Automatic Swing Lock System**

The boom is locked securely to prevent accidental boom swing out during driving.



CARGO CRANE

TM-ZT630



Lifting your dreams

**TADANO (Thailand) Co., Ltd.**  
500/70 Moo.2, T.Tasit, A.Pluak Daeng, Rayong 21140, Thailand  
Phone:+66-33-010-939 Fax: +66-33-010-940

**TADANO LTD.** (International Division)  
4-12, Kamezawa 2-chome, Sumida-ku Tokyo 130-0014, Japan  
Phone: 81-3-3621-7750 Fax: 81-3-3621-7785  
<http://www.tadano-global.com> E-mail: [tdnihq@tadano.co.jp](mailto:tdnihq@tadano.co.jp)



## TM-ZT633

### RATED LIFTING CAPACITIES - Empty Chassis

|                             |       |           |       |       |       |       |
|-----------------------------|-------|-----------|-------|-------|-------|-------|
| 3.47m boom                  |       |           |       |       |       |       |
| Load Radius (m)             | 1.85  | and below | 2.35  | 2.95  | 3.25  |       |
| Rated Lifting Capacity (kg) | 6,350 |           | 5,050 | 4,050 | 3,700 |       |
| 5.91m boom                  |       |           |       |       |       |       |
| Load Radius (m)             | 2.95  | and below | 3.8   | 4.1   | 4.5   | 5.0   |
| Rated Lifting Capacity (kg) | 4,050 |           | 3,130 | 2,930 | 2,580 | 1,950 |
| 8.31m boom                  |       |           |       |       |       |       |
| Load Radius (m)             | 3.8   | and below | 4.1   | 4.5   | 5.0   | 5.5   |
| Rated Lifting Capacity (kg) | 3,130 |           | 2,930 | 2,580 | 2,280 | 1,830 |
|                             |       |           |       |       |       | 1,680 |
|                             |       |           |       |       |       | 1,550 |
|                             |       |           |       |       |       | 1,430 |
|                             |       |           |       |       |       | 1,280 |

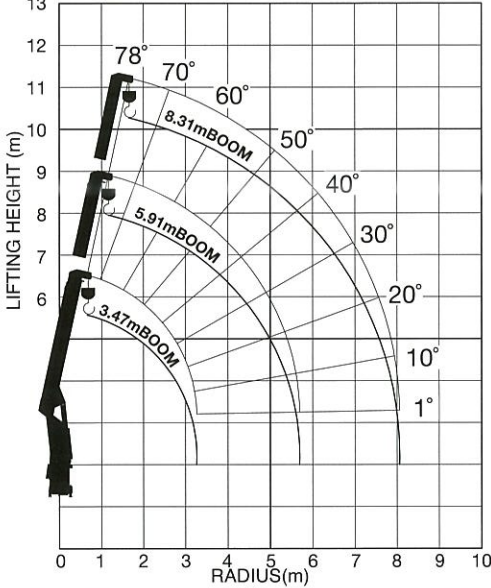
#### RATED LIFTING CAPACITIES NOTE:

The mass of hook (90kg), slings and all similarly used load handling devices must be added to the mass of the load.

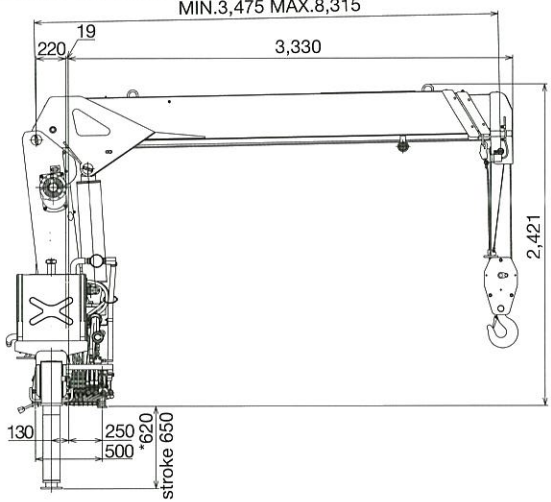
#### WORKING RANGE NOTE:

Lifting heights and boom angles are based on a straight (unloaded) boom, and allowance should be made for boom deflection under loaded conditions.

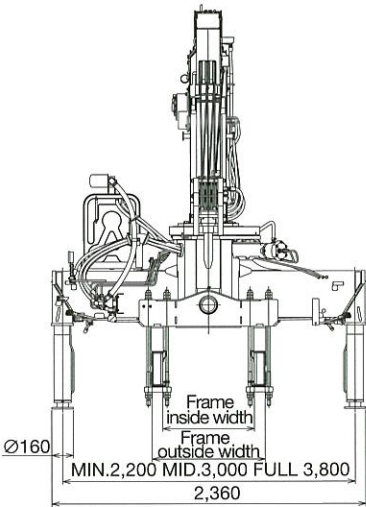
### WORKING RANGE



### DIMENSION



\*This dimension depends on jack floats applied.



## TM-ZT634

### RATED LIFTING CAPACITIES - Empty Chassis

|                             |       |           |       |       |       |       |
|-----------------------------|-------|-----------|-------|-------|-------|-------|
| 3.55m boom                  |       |           |       |       |       |       |
| Load Radius (m)             | 1.85  | and below | 2.35  | 2.95  | 3.33  |       |
| Rated Lifting Capacity (kg) | 6,350 |           | 5,050 | 4,050 | 3,630 |       |
| 5.99m boom                  |       |           |       |       |       |       |
| Load Radius (m)             | 2.95  | and below | 3.8   | 4.1   | 4.5   | 5.0   |
| Rated Lifting Capacity (kg) | 4,050 |           | 3,130 | 2,930 | 2,580 | 1,900 |
| 8.39m boom                  |       |           |       |       |       |       |
| Load Radius (m)             | 3.8   | and below | 4.1   | 4.5   | 5.0   | 5.5   |
| Rated Lifting Capacity (kg) | 3,130 |           | 2,930 | 2,580 | 2,280 | 1,830 |
|                             |       |           |       |       |       | 1,680 |
|                             |       |           |       |       |       | 1,550 |
|                             |       |           |       |       |       | 1,430 |
|                             |       |           |       |       |       | 1,280 |

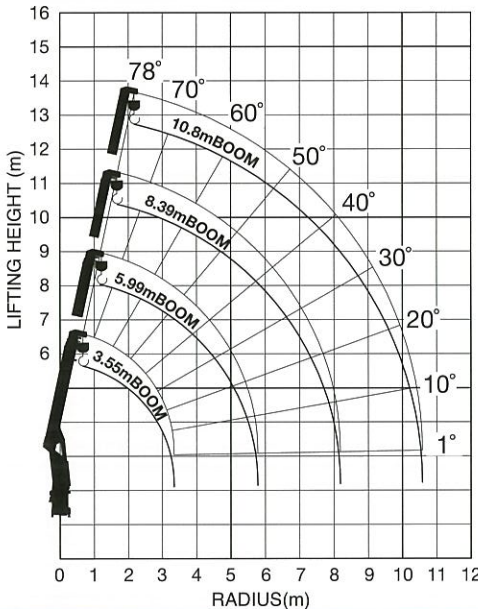
#### RATED LIFTING CAPACITIES NOTE:

The mass of hook (90kg), slings and all similarly used load handling devices must be added to the mass of the load.

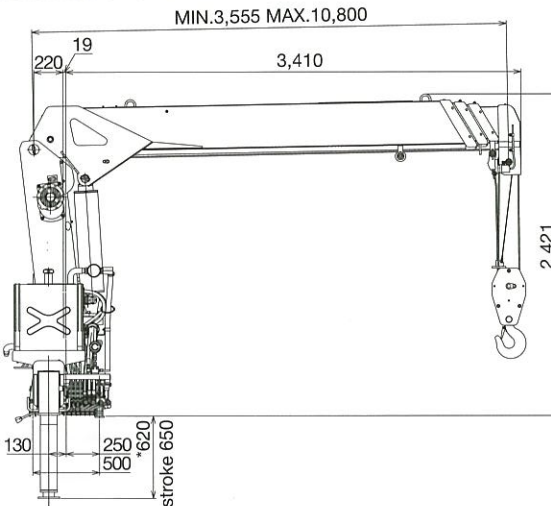
#### WORKING RANGE NOTE:

Lifting heights and boom angles are based on a straight (unloaded) boom, and allowance should be made for boom deflection under loaded conditions.

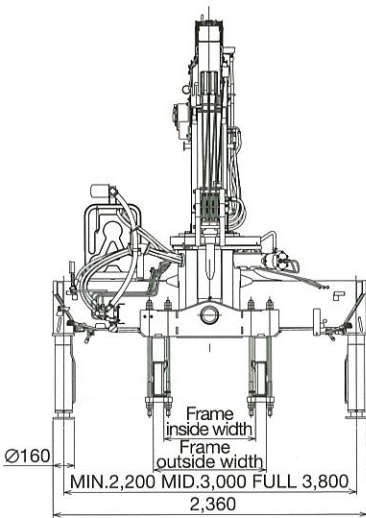
### WORKING RANGE



### DIMENSION



\*This dimension depends on jack floats applied.



## TM-ZT635

### RATED LIFTING CAPACITIES - Empty Chassis

|                             |       |           |       |       |       |       |
|-----------------------------|-------|-----------|-------|-------|-------|-------|
| 3.77m boom                  |       |           |       |       |       |       |
| Load Radius (m)             | 1.8   | and below | 2.25  | 2.85  | 3.55  |       |
| Rated Lifting Capacity (kg) | 6,350 |           | 5,050 | 4,050 | 3,230 |       |
| 6.21m boom                  |       |           |       |       |       |       |
| Load Radius (m)             | 2.85  | and below | 3.6   | 3.9   | 4.5   | 5.0   |
| Rated Lifting Capacity (kg) | 4,050 |           | 3,180 | 2,930 | 2,430 | 1,880 |
|                             |       |           |       |       |       | 1,650 |
| 8.59m boom                  |       |           |       |       |       |       |
| Load Radius (m)             | 3.6   | and below | 3.9   | 4.5   | 5.0   | 5.5   |
| Rated Lifting Capacity (kg) | 3,130 |           | 2,930 | 2,430 | 2,130 | 1,880 |
|                             |       |           |       |       |       | 1,650 |
|                             |       |           |       |       |       | 1,480 |
|                             |       |           |       |       |       | 1,350 |
|                             |       |           |       |       |       | 1,230 |
|                             |       |           |       |       |       | 1,080 |

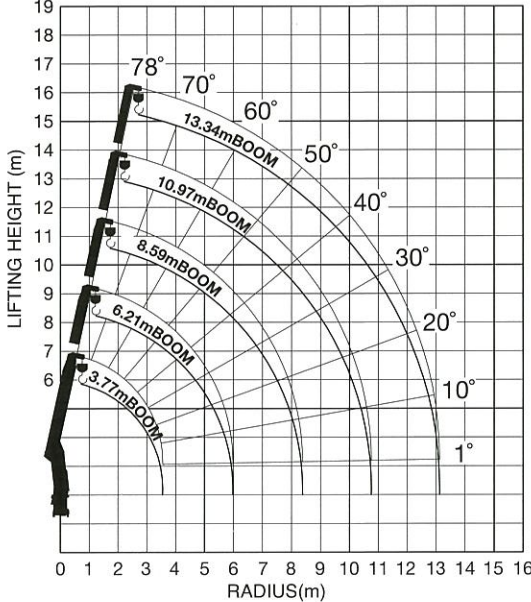
#### RATED LIFTING CAPACITIES NOTE:

The mass of hook (90kg), slings and all similarly used load handling devices must be added to the mass of the load.

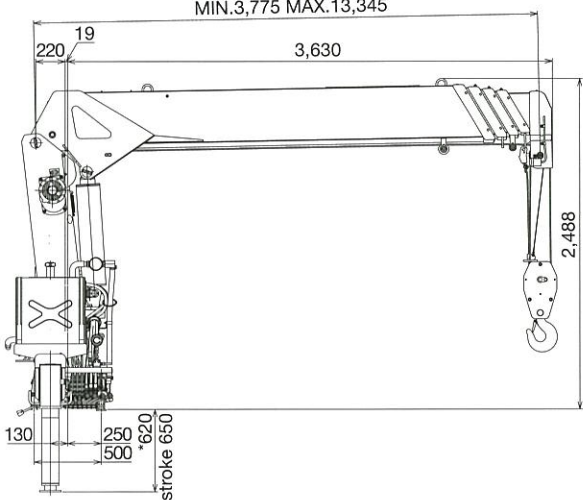
#### WORKING RANGE NOTE:

Lifting heights and boom angles are based on a straight (unloaded) boom, and allowance should be made for boom deflection under loaded conditions.

### WORKING RANGE



### DIMENSION



\*This dimension depends on jack floats applied.

