



# GT-1200XL-2

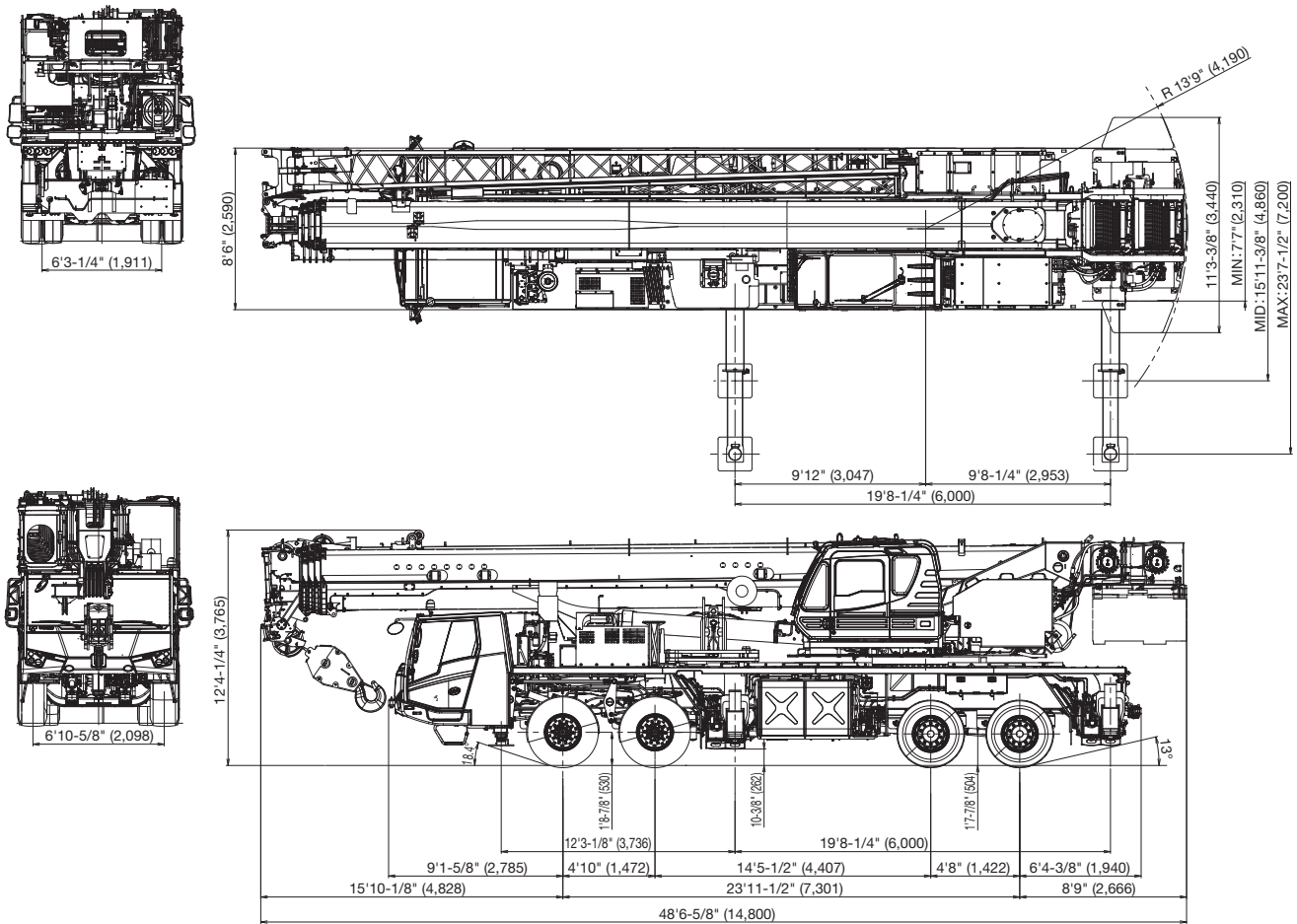
(Left-hand drive)

120 Ton (110 Metric Ton) Capacity

Form NO. GT-1200-2-00101/US-02

## HYDRAULIC TRUCK CRANE

### DIMENSIONS



Note: Dimension is with boom angle at -0.4 degree.  
( ) Reference dimensions in mm.

#### GENERAL DIMENSIONS

	Feet	Meters
Turning radius		
Front tire (curb to curb)	46' 3"	14.1

#### TRAVELING

Max.traveling speed 65 mph (105 km/h)

# CRANE SPECIFICATIONS

## BOOM

5 section boom, single cylinder telescoping with pinning system, 41.0' - 167.3' (12.5m - 51.0 m), of round box construction with 5 sheaves, 15-3/4" (0.400 m) root diameter, at boom head. 2 easily removable wire rope guards, rope dead end provided on both sides of boom head. Boom telescope sections are supported by wear pads both vertically and horizontally. Extension speed 126.3 ft in 280 seconds.

**BOOM ELEVATION** - By a double acting hydraulic cylinder with holding valve. Elevation -1.5°-80.5°, combination controls for hand or foot operation. Boom angle indicator. Automatic speed reduction and slow stop function. Boom raising speed 20° to 60° in - 40 seconds.

**JIB** - 2 stage bi-fold lattice type, 3.5°, 25° or 45° offset (tilt type). Single sheave, 15-5/8" (0.396 m) root diameter, at the head of both jib sections. Stored alongside base boom section. Jib length is 33.8' (10.3 m) or 58.7' (17.9 m). Assistant cylinders for mounting and stowing, controlled at right side of superstructure. Self stowing jib mounting pins.

**AUXILIARY LIFTING SHEAVE (SINGLE TOP)**  
Single sheave, 15-5/8"(0.396 m) root diameter. Mounted to main boom head for single line work (stowable).

**ANTI-TWO BLOCK** - Pendant type over-winding cut out device with audio-visual (FAILURE lamp/BUZZER) warning system.

## SLEWING

Hydraulic axial piston motor through planetary slewing speed reducer. Continuous 360° full circle slewing on ball bearing turn table at 1.5 min<sup>-1</sup> {rpm}. Equipped with manually locked/released slewing brake. A 360° positive slewing lock for travel modes, manually engaged in cab. Twin slewing system: Free slewing or lock slewing controlled by selector switch on front console.

## WINCH

**MAIN WINCH** - Variable speed type with grooved drum driven by hydraulic axial piston motor through speed reducer. Power load lowering and raising. Equipped with automatic brake (neutral brake) and counterbalance valve. Controlled independently of auxiliary winch. Equipped with cable follower and drum rotation indicator.

**DRUM** - Grooved 15" (0.382 m) root diameter x 29-1/4" (0.742 m) wide. Wire rope: 892' of 3/4" diameter rope (272 m of 19 mm). Drum capacity: 1293' (394 m) 7 layers. Maximum single line pull: 1st layer 21,800 lbs (9,900 kg). Maximum permissible line pull wire strength: 15,900 lbs (7,200 kg)

**AUXILIARY WINCH** - Variable speed type with grooved drum driven by hydraulic axial piston motor through speed reducer. Power load lowering and raising. Equipped with automatic brake (neutral brake) and counterbalance valve. Controlled independently of main winch. Equipped with cable follower and drum rotation indicator.

**DRUM** - Grooved 15" (0.382 m) root diameter x 29-1/4" (0.742 m) wide. Wire rope: 482' of 3/4" diameter rope (147 m of 19 mm). Drum capacity: 1293' (394 m) 7 layers. Maximum single line pull: 1st layer 21,800 lbs (9,900 kg). Maximum permissible line pull wire strength: 15,900 lbs (7,200 kg)

**WIRE ROPE** - Non-rotating 3/4" (19 mm) 7x35 class. Breaking Strength 79,400 lbs (36,000 kg)

## HOOK BLOCKS

100 ton (90.7 metric-ton, option) - 7 sheaves with swivel hook and safety latch.

55 ton (50 metric-ton) - 3 sheaves with swivel hook and safety latch.

22t ton (20 metric ton, option) - 1 sheave with swivel hook block and safety latch.

7.9 ton (7.2 metric ton) - Weighted hook with swivel and safety latch.

## COUNTERWEIGHT

Pinned to superstructure frame.

Total mass of counterweights:

- 7,700 lbs
- 12,800 lbs
- 17,900 lbs
- 25,400 lbs
- 33,000 lbs
- 40,600 lbs
- 55,100 lbs

Hydraulically controlled counterweight.

## HYDRAULIC SYSTEM

**PUMPS** - 2 variable piston pumps for crane functions. Tandem gear pump for slewing and optional equipment. Powered by carrier engine. Pump disconnect for crane is engaged/ disengaged by rocker switch from carrier cab.

**CONTROL VALVES** - Multiple valves actuated by pilot pressure with integral pressure relief valves.

**RESERVOIR** - 160 gallon (600 lit.) capacity. External sight level gauge.

**FILTRATION** - BETA10=10 return filter, full flow with bypass protection, located inside of hydraulic reservoir. Accessible for easy replacement.

**OIL COOLER** - Air cooled fan type.

## CAB AND CONTROLS

Crane operation can be performed from upper cab mounted on rotating superstructure.

15° tilt, Left side, 1 man type, steel construction with sliding door access and safety glass windows opening at side. Door window is powered control. Windshield glass window and roof glass window are shatter-resistant. Adjustable control lever stands for slewing, boom elevating, boom telescoping, auxiliary winch and main winch. Control lever stands can change neutral positions and tilt for easy access to cab. 3 way adjustable operator's seat with high back, headrest and armrest. Engine throttle knob. Foot operated controls: boom elevating, boom telescoping and engine throttle. Hot water cab heater and air conditioning.

Dash-mounted Instrument panel, Multi Function Display, Starter switch (engine start/stop), 12 V power outlet, USB port, power window switch, slewing brake switch, telescoping/auxiliary winch select switch, free slewing/lock slewing selector switch, air conditioning control switch.

Tadano electronic LOAD MOMENT INDICATOR system (AML-E2) including:

- Control lever lockout function with audible and visual pre-warning
- Number of parts of line
- Boom position indicator
- Outrigger state indicator
- Slewing angle
- Boom angle / boom length / jib offset angle / jib length / load radius / rated lifting capacities / actual loads read out
- Potential lifting height
- Ratio of actual load moment to rated load moment indication
- Automatic Speed reduction and slow stop function on boom elevation and slewing
- Working condition register switch
- Load radius / boom angle / tip height / slewing range preset function
- External warning lamp
- Tare function
- Main Hydraulic oil pressure
- Fuel consumption monitor

- Main winch / auxiliary winch select
- Drum rotation indicator (audible and visible type) main and auxiliary winch

AML-E2 monitors outrigger extended length and automatically programs the corresponding "RATED LIFTING CAPACITIES" table.

Operator's right hand console includes transmission gear selector, slewing lock lever and sight level bubble.

Upper console includes, roof washer and wiper switch, emergency outrigger set up key switch, jib equipped / removed select switch, high speed winch (main / aux) switch, Cab tilt switch, Pump disconnect enable switch and boom emergency.

NOTE: Each crane motion speed is based on unladen conditions.

## CARRIER SPECIFICATIONS

**TYPE** - Left-hand steering, 8 x 4.

**FRAME** - High tensile steel, all welded mono-box construction.

### TRANSMISSION

ZF TraXon 12TX 2615 SO

Automated Manual Transmission, electro-pneumatically operated dry-type clutch and automatic gear shifting with 12 forward gears and 2 reverse gears.

**TRANSFER CASE** - Two stage.

**TRAVEL SPEED** - 65 mph (105 km/h)

### AXLE

Front: Full floating type, steering axle.  
Rear: Full floating type, driving axle.

**STEERING** - BOSCH-Servocom, dual circuit hydraulic and mechanical steering of both front axles. Transfer-mounted emergency steering pump.

**SUSPENSION** - Front : Independent air suspension

Rear : Independent air suspension

**BRAKE SYSTEMS** - Service: ABS system. Full air brakes on all wheels. Dual air line system. Parking / Emergency : Spring loaded brake on rear 4-wheel controlled by knob of spring brake valve. Auxiliary: Constant throttle system with exhaust flap brake.

### ENGINE

Model	Cummins X12 (EPA 2021)
Type	Direct injection diesel
No. of cylinders	6
Combustion	4 cycle, turbo charged and after cooled
BoreXStroke, in. (mm)	5.2 x 5.67 (132 x 144)
Displacement, cu. in (liters)	720 (11.8)
Air cleaner	Dry type, replaceable element
Oil filter	Full flow with replaceable element
Fuel filter	Full flow with replaceable element
Fuel tank, gal. (liters)	100 (378), right side of carrier
Cooling	Liquid pressurized, recirculating by-pass

**TIRES** - Front: 445/65R22.5 Single x4 Rear: 315/80R22.5 Dual x4

**OUTRIGGERS**- Four hydraulic, beam and jack outriggers.

Hydraulically operated H-type outriggers.

Vertical jack cylinders equipped with integral holding valve.

Each outrigger beam and jack is controlled independently.

Outrigger jack floats are attached thus eliminating the need of manually attaching and detaching them. Controls and sight level bubble located either side of carrier. 4 outrigger extension lengths are provided with corresponding "RATED LIFTING CAPACITIES" for crane duty in confined areas.

Min. extension 7' 7" (2.31 m) center to center

Mid. extension 15' 11 3/8" (4.86 m) center to center

Max. extension 23' 7-1/2" (7.20 m) center to center

Float size 21 3/8" x 21 3/8" (0.54 m x 0.54 m)

**FRONT JACK** - A fifth hydraulically operated outrigger jack.

Mounted to the front frame of carrier. Hydraulic cylinder equipped with integral holding valve and steel float.

### CARRIER CAB

Two man full width cab of composite (steel sheet metal and fiber-glass) structure, with safety glass, air-cushioned seats, driver's seat offering various adjustment options, with memory function, engine dependent water heater, air conditioning, multifunction display and Cruise Control.

Radiator	Fin and tube core, thermostat controlled
Fan, in. (mm)	Suction type, 11-blade, (812)
Starting	24 volt
Charging	24 volt system, negative ground
Battery	2-120 amp. Hour
Compressor, air, CFM (l/min)	25.9 (731) @2,000 rpm
Horsepower (kW)	Gross 500 (373)
Torque, Max. ft-lb (Nm)	1700 (2,305)
Capacity, gal. (liters)	
Cooling water	5.5 (21)
Lubrication	11 (42)
Fuel	100 (378)
DEF/AdBlue	15 (57)

# STANDARD EQUIPMENT

## FOR SUPERSTRUCTURE

- 5 section boom, single cylinder telescoping with pinning system 41'-167.3' (12.5 m-51.0 m)
- 33.8' or 58.7' (10.3 m or 17.9 m) quick reeving type bi-fold lattice jib (tilt type) with 3.5°, 25° or 45° pinned offsets and self storing pins.
- Auxiliary lifting sheave (single top) stowable
- 55 ton (50 metric ton) - 3 sheaves with swivel hook block and safety latch for 3/4"(19 mm) wire rope
- 7.9 ton (7.2 metric ton) hook ball with swivel
- Variable speed main hoist with grooved drum, cable follower and 892' of 3/4" cable.
- Variable speed auxiliary hoist with grooved drum, cable follower and 482' of 3/4" cable.
- 2-speed winch
- Tadano electronic load moment indicator system (AML-E2)
- Self-removable counterweight (total 55,1000 lbs)
- Independently controlled outriggers
- Three outrigger extension positions (min/mid/max)
- Outrigger extension length detectors
- Front jack (Fifth jack)
- Trailer coupling device
- Hydraulic circuit for dolly (Elevation, swing and swing brake)
- Smart Chart
- Drum rotation indicator (audible, visible and thumper type) main and auxiliary hoist
- Anti-Two block device (overwind cutout)
- Winch over-unwinding prevention
- Telematics (machine data logging and monitoring system) with HELLO-NET via internet
- Hydraulic oil cooler
- Weighted hook storage compartment
- Tadano twin slewing system and 360° positive slewing lock
- LED work lights
- Positive control
- Eco mode system
- Winch drum cameras
- Annemometer
- Air craft warning light
- Boom angle indicator
- 15° tilt cab
- Self centering finger control levers with pilot control
- Control pedals for boom elevating and boom telescoping
- 3 way adjustable cloth seat with armrests and high back

- Hot water cab heater and air conditioner
- Tinted safety glass and sun visor
- Front windshield wiper and washer
- Roof window wiper and washer
- Power window (cab door)
- 12 V power outlet
- USB port (power supply)

## FOR CARRIER

- Cummins X12 (EPA 2021) direct injection diesel engine
- ZF TraXon 12TX 2615 SO automatic mechanical transmission with electro-pneumatically operated dry-type clutch and automatic gear shifting with 12 forward gears and 2 reverse gears.
- ZF TC27L Transfer case (2 stage)
- Hendrickson independent air suspensions
- 8 x 4 Drive
- Inter wheel differential lock on axles 3 and 4
- Aluminum disc wheels
- Front tires 445/65R22.5 Single x4
- Rear tiers 315/80R22.5 Dual x4
- Air Disc brakes
- Anti-lock braking system (ABS)
- Engine compression brake
- BOSCH-Servocom, dual circuit hydraulic and mechanical steering system with emergency steering pump Multi Function Display
- Fuel Tank 100 gallon
- Adblue Tank 15 gallon
- Hook block tie down (front bumper)
- Towing hooks-Front and rear
- Carrier mounted storage box
- Aluminum fenders
- Air dryer
- Water separator with filter(high filtration)
- Battery Disconnect Switch
- Backup camera
- Beacon lamp
- Resin full cab
- 3 way adjustable air-cushioned seat
- Tilt telescoping steering wheel
- Hourmeter (Operation from the carrier and superstructure)
- Air conditioning
- USB port (power supply)
- Cruise control
- Clearance sonar (Rear side)

# OPTIONAL EQUIPMENT

## FOR SUPERSTRUCTURE

- 100 ton (90.7 metric ton) - 7 sheaves with swivel hook block and safety latch for 3/4"(19 mm) wire rope
- 22t ton (20 metric ton) - 1 sheave with swivel hook block and safety latch for 3/4"(19 mm) wire rope
- Tire inflation kit

# HOISTING PERFORMANCE

## LINE SPEEDS AND PULLS

Layer	Main or auxiliary winch - 15" (0.382 m) drum					
	Line speeds <sup>1</sup>				Line pulls Available <sup>2</sup>	
	Low		High		Low	
	F.P.M	m/min	F.P.M	m/min	Lbs.	kgf
1st	253	77	354	108	21,800	9,900
2nd	276	84	384	117	19,900	9,010
3rd	299	91	413	126	18,200	8,270
4th	318	97	446	136	16,800	7,640
5th	341	104	476	145	15,600	7,090

- Maximum permissible line pull wire strength. 15,900 lbs (7,200 kg) with 7 x 35 class rope.

<sup>1</sup> Line speeds based only on hook block, not loaded.

<sup>2</sup> Developed by machinery with each layer of wire rope, but not based on rope strength or other limitation in machinery or equipment.

## DRUM WIRE ROPE CAPACITIES

Wire rope layer	Main and auxiliary drum grooved lagging			
	3/4" (19 mm) wire rope			
	Rope per layer		Total wire rope	
	Feet	Meter	Feet	Meter
1	147.0	44.8	147.0	44.8
2	159.4	48.6	306.4	93.4
3	172.2	52.5	478.7	145.9
4	184.7	56.3	663.4	202.2
5	197.2	60.1	860.6	262.3

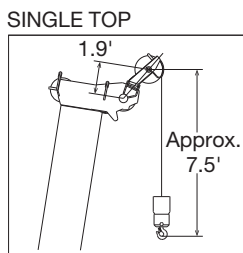
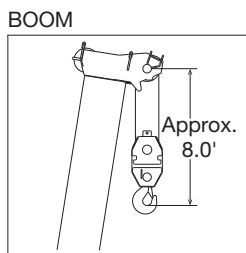
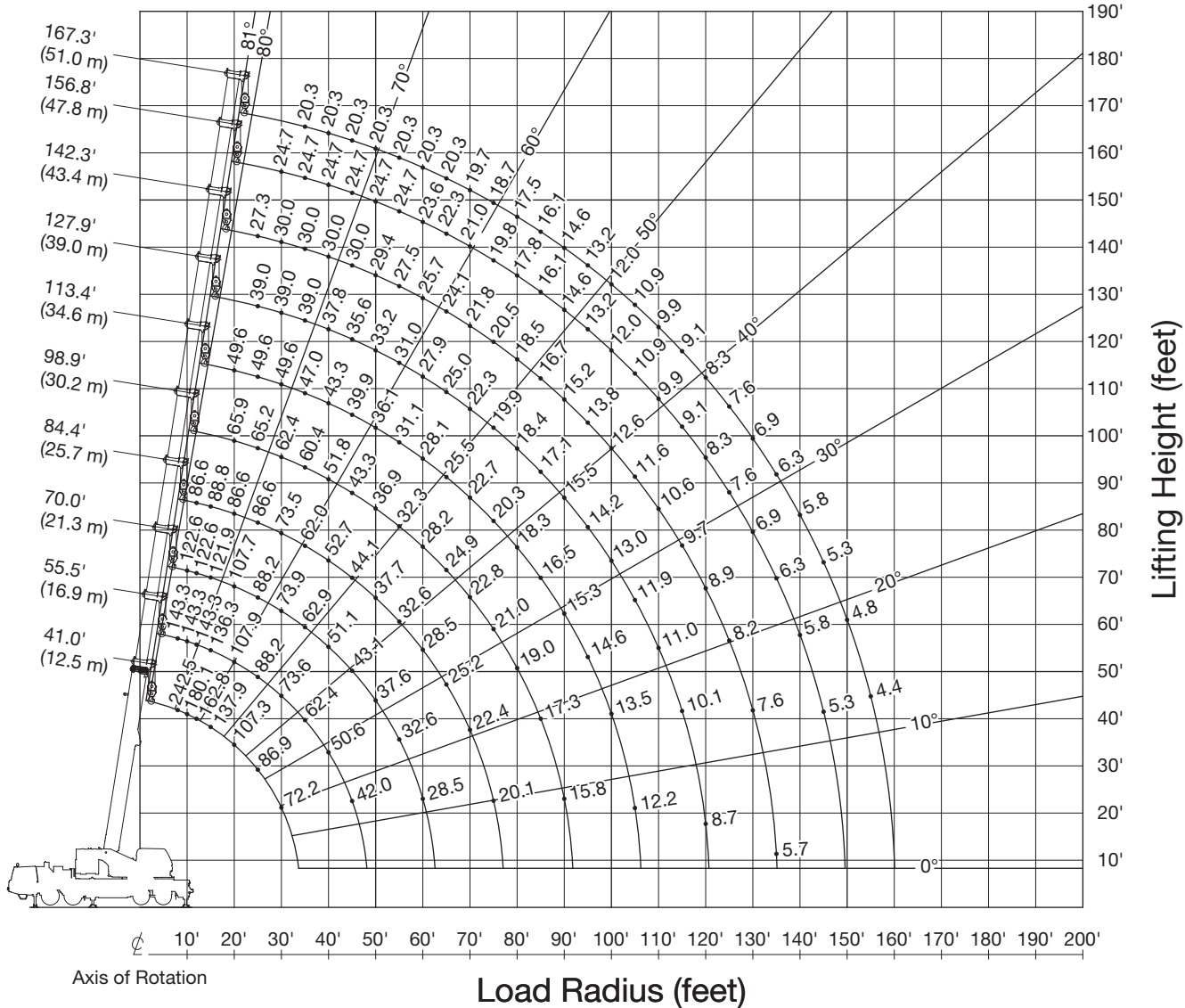
## DRUM DIMENSIONS

	Inch	mm
Root diameter	15"	382
Length	29-1/4"	742
Flange diameter	26-5/8"	677

# GT-1200XL-2 WORKING RANGE CHART

360° ROTATION

Unit: klbs



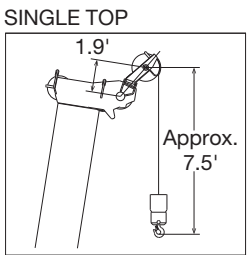
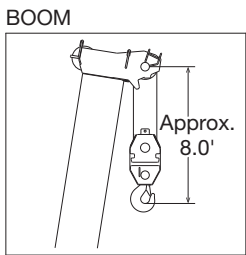
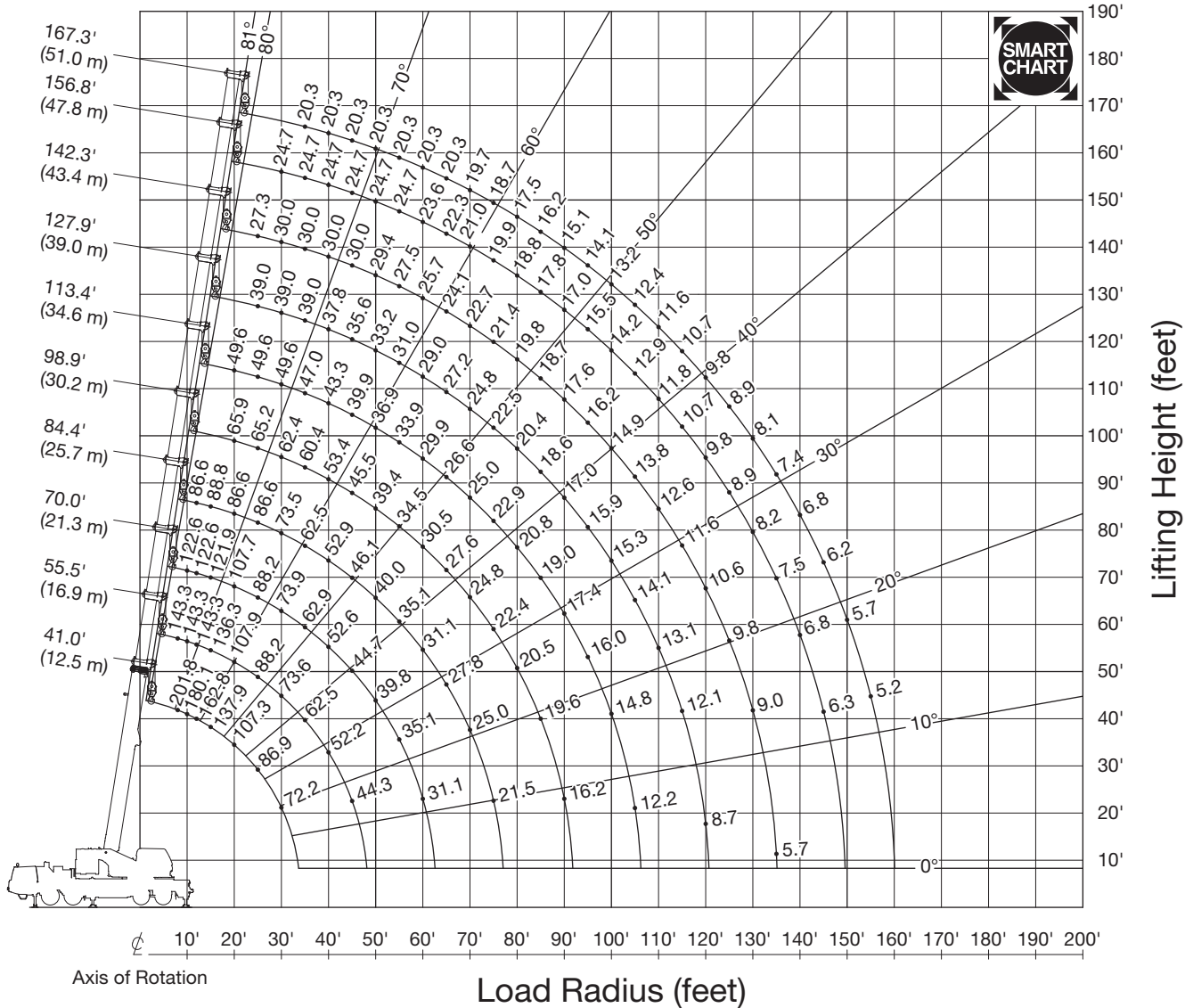
NOTE: Boom geometry shown are for unloaded condition and machine standing level on firm supporting surface. Boom deflection and subsequent radius and boom angle change must be accounted for when applying load to hook.



# GT-1200XL-2 WORKING RANGE CHART

## SMART CHART

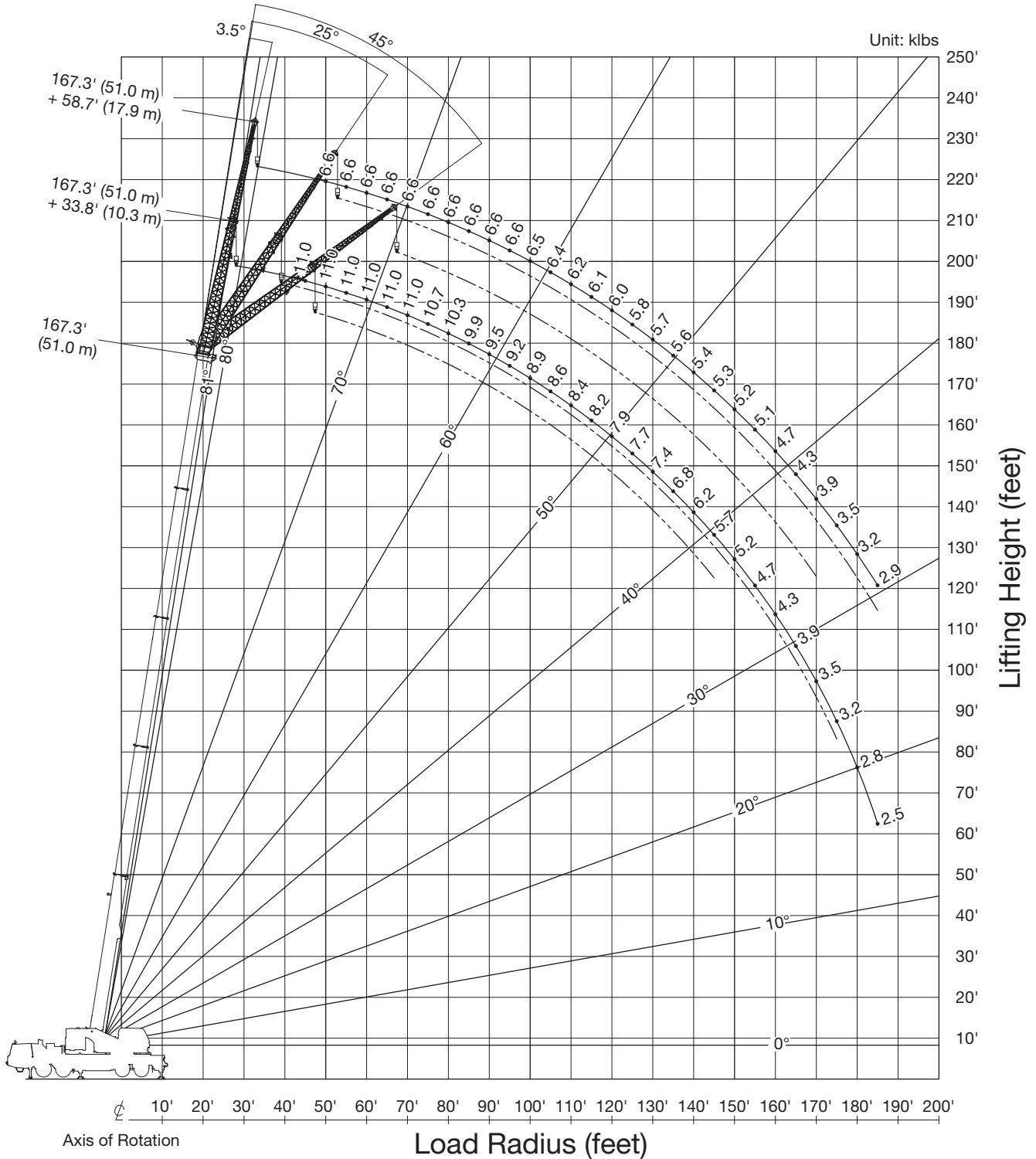
Unit: klbs



NOTE: Boom geometry shown are for unloaded condition and machine standing level on firm supporting surface. Boom deflection and subsequent radius and boom angle change must be accounted for when applying load to hook.

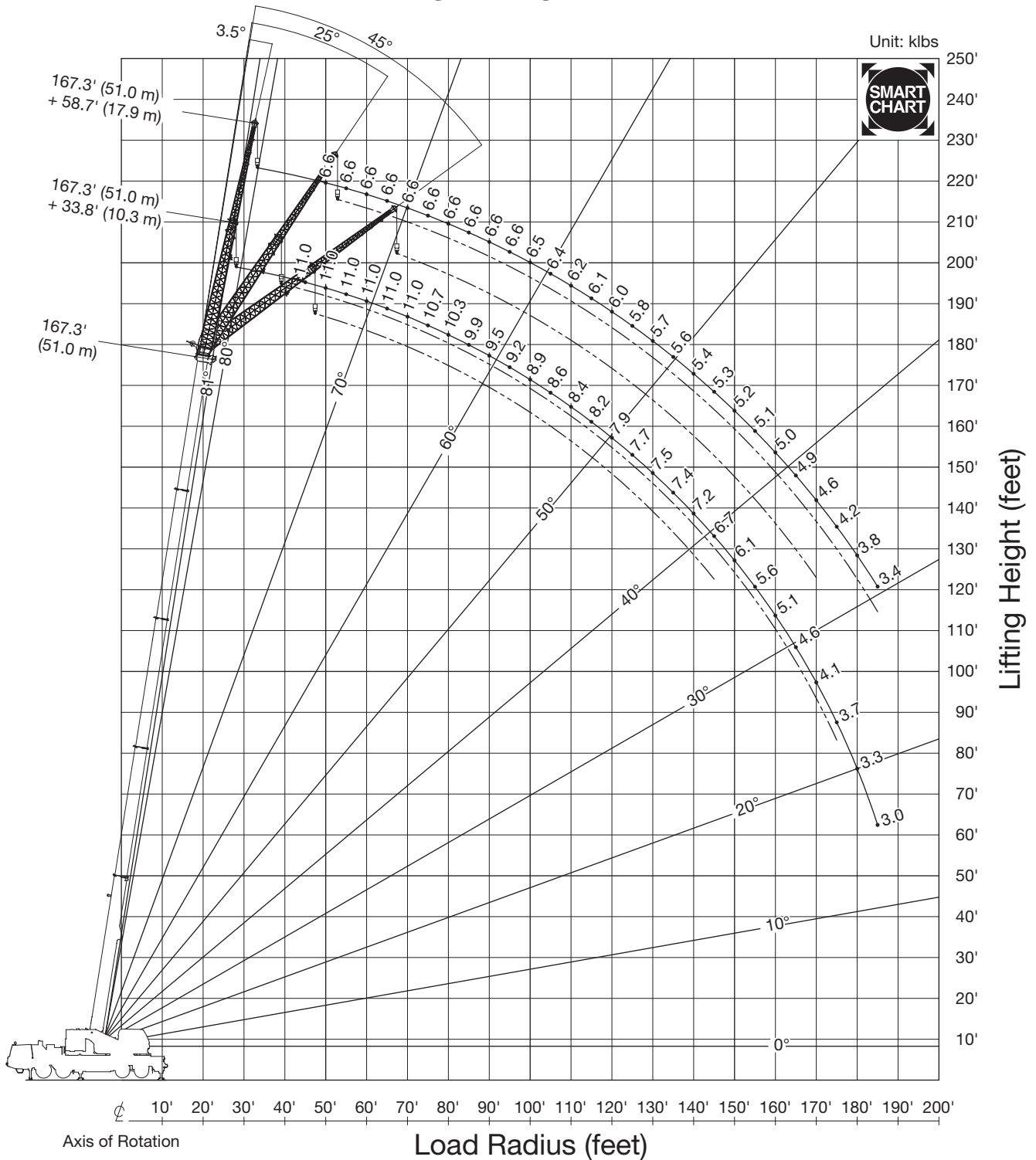
# GT-1200XL-2 WORKING RANGE CHART

360° ROTATION



# GT-1200XL-2 WORKING RANGE CHART

## SMART CHART





# GT-1200XL-2 RATED LIFTING CAPACITIES (IN POUNDS)

COUNTERWEIGHT 55,100 lbs (25.0 t) ON OUTRIGGER FULLY EXTEND 23'7-1/2" (7.2 m) SPREAD 360° ROTATION															
A	1	5	4	3	1	5	4	3	2	1	4	3	2	1	
B	1	21	18	14	2	22	19	15	10	3	20	16	11	4	
D	C		55.5' (16.9 m)				70.0' (21.3 m)				84.4' (25.7 m)				
	41.0' (12.5 m)	41.0' (12.5 m)													
8'	242,500	186,700	143,300	127,900	88,200	77,200									
10'	180,100	180,100	143,300	127,900	88,200	77,200	122,600	121,900	88,200	77,200	65,700				
12'	162,800	162,800	143,300	127,900	88,200	77,200	122,600	121,900	88,200	77,200	60,200			86,600	77,200
15'	137,900	137,900	136,300	127,900	88,200	75,600	117,400	121,900	88,200	77,200	53,600	88,800	86,600	77,200	57,600
20'	107,300	107,300	107,000	107,900	88,200	65,000	101,000	107,700	88,200	71,200	45,100	85,100	86,600	75,800	49,400
25'	86,900	86,900	86,400	87,400	88,200	57,300	86,000	87,200	88,200	63,500	39,000	75,500	86,600	68,300	43,200
30'	72,200	72,200	71,700	72,700	73,600	51,300	71,300	72,500	73,900	57,500	34,300	67,000	73,500	62,200	38,500
35'			59,500	61,100	62,400	46,600	58,700	60,600	62,900	52,000	30,600	59,700	62,000	57,200	34,700
40'			47,900	49,300	50,600	42,900	47,200	49,000	51,100	47,100	27,700	48,200	50,400	52,700	31,600
45'			39,500	40,900	42,000	40,200	38,800	40,500	42,500	43,100	25,200	39,800	41,900	44,100	28,900
50'							32,500	34,100	36,100	37,600	23,200	33,500	35,500	37,700	26,600
55'							27,600	29,200	31,100	32,600	21,600	28,500	30,500	32,600	24,600
60'							23,800	25,300	27,100	28,500	20,300	24,600	26,500	28,500	22,900
65'												21,300	23,200	25,200	21,400
70'												18,600	20,500	22,400	20,200
75'												16,400	18,200	20,100	19,100
80'															
85'															
90'															
95'															
100'															
105'															
110'															
115'															
120'															
125'															
130'															
135'															
140'															
145'															
150'															
165'															
170'															
175'															
E	39,000	39,000	39,000	39,000	39,000	39,000	39,000	39,000	39,000	39,000	39,000	39,000	39,000	39,000	39,000
F	0	0	0	0	0	0	0	0	0	0	0	0	0	0	0
Telescoping condition (%)															
Tele.1	0	0	46	0	0	92	46	0	0	0	92	46	0	0	0
Tele.2	0	0	0	46	0	0	0	46	46	0	0	46	46	46	0
Tele.3	0	0	0	0	46	0	0	0	46	46	0	0	46	46	46
Tele.4	0	0	0	0	0	46	0	0	0	46	92	0	0	46	92
G	16	12	10	9	6	5	8	8	6	5	5	6	6	5	4

COUNTERWEIGHT 55,100 lbs (25.0 t) ON OUTRIGGER FULLY EXTEND 23'7-1/2" (7.2 m) SPREAD 360° ROTATION																						
A	3	2	6	7	1	2	7	6	6	7	8	1	8	1	1	9						
B	17	12	23	25	5	13	26	6	24	27	28	7	29	8	9	30						
D	C				98.9' (30.2 m)				113.4' (34.6 m)				127.9' (39.0 m)				142.3' (43.4 m)		156.8' (47.8 m)		167.3' (51.0 m)	
8'																						
10'																						
12'																						
15'																						
20'	65,900	62,400	59,500	52,500	45,300	49,600	45,400	40,100														
25'	65,200	62,400	54,800	46,500	39,500	49,600	45,400	39,900	39,000	37,300	36,200	32,000		27,300								
30'	59,100	62,400	50,100	41,700	34,600	49,600	44,000	36,600	39,000	37,300	36,200	32,000	30,000	27,300	24,700							
35'	53,500	60,400	45,400	37,800	30,900	47,000	40,100	33,100	39,000	37,300	36,200	32,000	30,000	27,300	24,700	20,300						
40'	48,500	51,800	41,500	34,700	27,700	43,300	36,900	30,000	37,800	37,300	35,900	30,900	30,000	27,300	24,700	20,300						
45'	41,000	43,300	38,100	32,000	25,100	39,900	34,200	27,400	35,200	35,600	33,600	29,000	30,000	27,300	24,700	20,300						
50'	34,700	36,900	35,200	29,700	23,000	36,100	31,900	25,200	32,700	33,200	31,500	26,800	29,400	27,200	24,700	20,300						
55'	29,700	31,900	32,300	27,600	21,100	31,100	29,900	23,300	30,400	31,000	29,600	24,900	27,500	25,800	24,700	20,300						
60'	25,700	27,800	28,200	25,800	19,600	27,100	28,100	21,700	27,100	27,900	27,800	23,300	25,700	24,400	23,600	20,300						
65'	22,400	24,500	24,900	24,200	18,200	23,800	25,500	20,300	23,900	24,600	25,000	21,800	24,100	23,100	22,300	20,300						
70'	19,700	21,700	22,100	22,800	17,000	21,000	22,700	19,000	21,100	21,900	22,300	20,600	21,500	21,800	21,000	19,700						
75'	17,400	19,400	19,800	21,000	16,000	18,700	20,300	18,000	18,800	19,500	19,900	19,400	19,200	20,500	19,800	18,700						
80'	15,400	17,400	17,700	19,000	15,100	16,600	18,300	17,000	16,800	17,500	17,900	18,400	17,200	18,500	17,800	17,500						
85'	13,700	15,700	16,000	17,300	14,300	14,900	16,500	16,100	15,000	15,700	16,100	17,100	15,400	16,700	16,100	16,100						
90'	12,300	14,200	14,500	15,800	13,600	13,400	15,000	15,300	13,500	14,200	14,600	15,500	13,900	15,200	14,600	14,600						
95'						12,100	13,700	14,600	12,100	12,900	13,200	14,200	12,500	13,800	13,200	13,200						
100'						10,900	12,500	13,500	10,900	11,700	12,000	13,000	11,300	12,600	12,000	12,000						
105'						9,600	11,000	12,200	9,900	10,600	11,000	11,900	10,300	11,600	10,900	10,900						
110'									9,000	9,700	10,000	11,000	9,300	10,600	9,900	9,900						
115'									8,100	8,800	9,200	10,100	8,500	9,700	9,100	9,100						
120'									6,600	7,200	7,600	8,700	7,700	8,900	8,300	8,300						
125'													7,000	8,200	7,600	7,600						
130'													6,400	7,600	6,900	6,900						
135'													4,600	5,700	6,300	6,300						
140'															5,800	5,800						
145'															5,300	5,300						
150'																4,800						
165'																						
170'																						
175'																						
E	39,000	39,000	39,000	39,000	39,000	39,000	39,000	39,000	39,000	39,000	37,300	36,200	32,000	30,000	27,300	24,700	20,300					
F	0	0	0	0	0	0	0	0	0	0	0	0	0	0	0	0	0					
Telescoping condition (%)																						
Tele.1	92	46	0	0	0	92	46	0	92	92	46	0	92	46	92	100						
Tele.2	46	46	92	46	0	46	46	46	92	46	92	92	92	92	92	100						
Tele.3	46	46	46	46	92	46	46	92	46	46	92	92	92	92	92	100						
Tele.4	0	46	46	92	92	46	92	92	46	92	46	92	46	92	92	100						
G	5	4	4	4	4	4	4	4	4	4	4	4	4	4	4	4						

\*Over rear with special equipment

A : Boom block

B : Boom number

C : Boom length in feet

D : Load radius in feet

E : Maximum capacity without boom pin

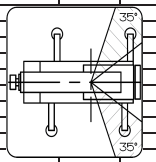
F : Minimum boom angle (°) for indicator length (no load)

G : Number of parts of line

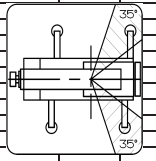
NOTE: The lifting capacity data stored in the LOAD MOMENT INDICATOR (AML-E2) is based on the standard number of parts of line listed in the chart.

# GT-1200XL-2 RATED LIFTING CAPACITIES (IN POUNDS)

COUNTERWEIGHT 55,100 lbs (25.0 t) ON OUTRIGGER FULLY EXTEND 23'7-1/2" (7.2 m) SPREAD															
SMART CHART															
A	1	5	4	3	1	5	4	3	2	1	4	3	2	1	
B	1	21	18	14	2	22	19	15	10	3	20	16	11	4	
C	41.0' (12.5 m)	55.5' (16.9 m)				70.0' (21.3 m)					84.4' (25.7 m)				
D	8'	201,800	186,700	143,300	127,900	88,200	77,200								
10'	180,100	180,100	143,300	127,900	88,200	77,200	122,600	121,900	88,200	77,200	65,700				
12'	162,800	162,800	143,300	127,900	88,200	77,200	122,600	121,900	88,200	77,200	60,200				
15'	137,900	137,900	136,300	127,900	88,200	75,600	117,400	121,900	88,200	77,200	53,600	88,800	86,600	77,200	57,600
20'	107,300	107,300	107,000	107,900	88,200	65,000	101,000	107,700	88,200	71,200	45,100	85,100	86,600	75,800	49,400
25'	86,900	86,900	86,400	87,400	88,200	57,300	86,000	87,200	88,200	63,500	39,000	75,500	86,600	68,300	43,200
30'	72,200	72,200	71,700	72,700	73,600	51,300	71,300	72,500	73,900	57,500	34,300	67,000	73,500	62,200	38,500
35'			60,400	61,600	62,500	46,600	59,800	61,300	62,900	52,000	30,600	59,900	62,500	57,200	34,700
40'			50,000	51,200	52,200	42,900	49,400	50,800	52,600	47,100	27,700	50,300	52,100	52,900	31,600
45'			42,200	43,300	44,300	40,200	41,600	43,000	44,700	43,100	25,200	42,500	44,200	46,100	28,900
50'							35,600	36,900	38,600	39,800	23,200	36,400	38,100	40,000	26,600
55'							30,800	32,200	33,800	35,100	21,600	31,600	33,300	35,100	24,600
60'							26,700	28,000	29,800	31,100	20,300	27,700	29,300	31,100	22,900
65'												24,400	26,100	27,800	21,400
70'												21,700	23,300	25,000	20,200
75'												18,000	19,600	21,500	19,100
80'															
85'															
90'															
95'															
100'															
105'															
110'															
115'															
120'															
125'															
130'															
135'															
140'															
145'															
150'															
155'															
160'															
165'															
170'															
175'															
E	39,000	39,000	39,000	39,000	39,000	39,000	39,000	39,000	39,000	39,000	39,000	39,000	39,000	39,000	39,000
F	0	0	0	0	0	0	0	0	0	0	0	0	0	0	0
Telescoping condition (%)															
Tele.1	0	0	46	0	0	0	92	46	0	0	0	92	46	0	0
Tele.2	0	0	0	46	0	0	0	46	46	0	0	46	46	46	0
Tele.3	0	0	0	0	46	0	0	0	46	46	0	0	46	46	46
Tele.4	0	0	0	0	0	46	0	0	0	46	92	0	0	46	92
G	16	12	10	9	6	5	8	8	6	5	5	6	6	5	4



COUNTERWEIGHT 55,100 lbs (25.0 t) ON OUTRIGGER FULLY EXTEND 23'7-1/2" (7.2 m) SPREAD																
SMART CHART																
A	3	2	6	7	1	2	7	1	6	7	8	1	8	1	1	9
B	17	12	23	25	5	13	26	6	24	27	28	7	29	8	9	30
C	98.9' (30.2 m)				113.4' (34.6 m)				127.9' (39.0 m)				142.3' (43.4 m)		156.8' (47.8 m)	167.3' (51.0 m)
D	8'															
10'																
12'																
15'																
20'	65,900	62,400	59,500	52,500	45,300	49,800	45,400	40,100								
25'	65,200	62,400	54,800	46,500	39,500	49,600	45,400	39,900	39,000	37,300	36,200	32,000		27,300		
30'	59,100	62,400	50,100	41,700	34,600	49,600	44,000	36,600	39,000	37,300	36,200	32,000	30,000	27,300	24,700	
35'	53,500	59,400	45,400	37,800	30,800	47,000	40,100	33,100	39,000	37,300	36,200	32,000	30,000	27,300	24,700	20,300
40'	48,500	53,400	41,500	34,700	27,700	43,300	36,900	30,400	37,800	37,300	35,800	30,800	30,000	27,300	24,700	20,300
45'	43,500	45,500	38,100	32,000	25,100	39,900	34,200	27,400	35,200	35,600	33,600	29,000	30,000	27,300	24,700	20,300
50'	37,500	39,400	35,200	29,700	23,000	36,900	31,900	25,200	32,700	33,200	31,500	26,800	29,400	27,200	24,700	20,300
55'	32,600	34,500	32,700	27,600	21,100	33,900	29,900	23,300	30,400	31,000	29,600	24,900	27,500	25,800	24,700	20,300
60'	28,700	30,500	30,400	25,800	19,600	29,900	28,100	21,700	28,400	29,000	27,800	23,300	25,700	24,400	23,600	20,300
65'	25,400	27,200	27,600	24,200	18,200	26,600	26,500	20,300	26,500	27,200	26,300	21,800	24,100	23,100	22,300	20,300
70'	22,600	24,400	24,800	22,800	17,000	23,800	25,000	19,000	23,900	24,600	24,800	20,600	22,700	21,800	21,000	19,700
75'	20,300	22,000	22,400	21,600	16,000	21,400	22,900	18,000	21,500	22,200	22,500	19,400	21,400	20,700	19,900	18,700
80'	18,300	20,000	20,300	20,500	15,100	19,400	20,800	17,000	19,400	20,100	20,400	18,400	19,800	19,600	18,800	17,500
85'	16,400	18,200	18,500	19,600	14,300	17,500	19,000	16,100	17,600	18,300	18,600	17,500	18,000	18,700	17,800	16,200
90'	12,800	14,600	15,000	16,200	13,600	16,000	17,400	15,300	16,000	16,700	17,000	16,400	16,700	17,600	17,000	15,100
95'						14,400	16,000	14,600	14,500	15,300	15,600	15,900	15,000	16,200	15,500	14,100
100'						13,000	14,800	14,000	13,100	13,900	14,400	15,300	13,500	14,900	14,200	13,200
105'						9,600	11,000	12,200	11,800	12,600	13,100	14,100	12,300	13,800	12,900	12,400
110'									10,600	11,500	11,900	13,100	11,100	12,600	11,800	11,600
115'									9,700	10,500	10,900	12,100	10,100	11,600	10,700	10,700
120'									6,600	7,200	7,600	8,700	9,100	10,600	9,800	9,800
125'													8,300	9,800	8,900	8,900
130'													7,600	9,000	8,200	8,100
135'													4,600	5,700	7,500	7,400
140'															6,800	6,800
145'															6,300	6,200
150'																5,700
155'																5,200
160'																
165'																
170'																
175'																
E	39,000	39,000	39,000	39,000	39,000	39,000	39,000	39,000	39,000	37,300	36,200	32,000	30,000	27,300	24,700	20,300
F	0	0	0	0	0	0	0	0	0	0	0	0	0	0	0	0
Telescoping condition (%)																
Tele.1	92	46	0	0	0	92	46	0	92	92	46	0	92	46	92	100
Tele.2	46	46	92	46	0	46	46	46	92	46	92	92	92	92	92	100
Tele.3	46	46	46	46	92	46	46	92	46	46	92	92	92	92	92	100
Tele.4	0	46	46	92	92	46	92	92	46	92	46	92	46	92	92	100
G	5	4	4	4	4	4	4	4	4	4	4	4	4	4	4	4



\*with the special equipment

A : Boom block

B : Boom number

C : Boom length in feet

D : Load radius in feet

E : Maximum capacity without boom pin

F : Minimum boom angle (°) for indicator length (no load)

G : Number of parts of line

NOTE: The lifting capacity data stored in the LOAD MOMENT INDICATOR (AML-E2) is based on the standard number of parts of line listed in the chart.

# GT-1200XL-2 RATED LIFTING CAPACITIES (IN POUNDS)

COUNTERWEIGHT 40,600 lbs (18.4 t) ON OUTRIGGER FULLY EXTEND 23'7-1/2" (7.2 m) SPREAD 360° ROTATION															
A	1	5	4	3	1	5	4	3	2	1	4	3	2	1	
B	1	21	18	14	2	22	19	15	10	3	20	16	11	4	
D	C	55.5' (16.9 m)				70.0' (21.3 m)					84.4' (25.7 m)				
	C	41.0' (12.5 m)	41.0' (12.5 m)												
8'		201,800	186,700	143,300	127,900	88,200	77,200								
10'		180,100	180,100	143,300	127,900	88,200	77,200	122,600	121,900	88,200	77,200	65,700			
12'		160,000	160,000	143,300	127,900	88,200	77,200	122,600	121,900	88,200	77,200	60,200			
15'		134,100	134,100	133,800	127,900	88,200	75,600	117,400	121,900	88,200	77,200	53,500	88,800	86,600	77,200
20'		103,900	103,900	103,500	104,500	88,200	65,000	101,000	104,200	88,200	71,200	45,100	88,800	86,600	75,800
25'		83,700	83,700	83,200	84,300	85,100	57,300	82,800	84,000	85,500	63,500	39,000	75,500	85,100	68,300
30'		65,700	65,700	64,800	66,500	67,900	51,300	63,800	65,800	68,300	57,500	34,300	64,900	67,400	62,200
35'				49,800	51,300	52,700	46,600	49,000	50,900	53,200	52,000	30,600	50,000	52,300	54,800
40'				39,800	41,200	42,400	42,900	39,000	40,800	42,900	44,600	27,700	40,100	42,200	44,600
45'				32,500	33,900	35,000	35,900	31,800	33,500	35,500	37,100	25,200	32,800	34,900	37,100
50'								26,400	28,000	29,900	31,400	23,200	27,400	29,400	31,500
55'								22,200	23,700	25,600	27,100	21,600	23,100	25,000	27,100
60'								18,800	20,300	22,100	23,600	20,300	19,600	21,500	23,600
65'													16,800	18,700	20,700
70'													14,500	16,300	18,300
75'													12,600	14,400	16,300
80'															
85'															
90'															
95'															
100'															
105'															
110'															
115'															
120'															
125'															
130'															
135'															
140'															
145'															
150'															
155'															
160'															
165'															
170'															
175'															
E		39,000	39,000	39,000	39,000	39,000	39,000	39,000	39,000	39,000	39,000	39,000	39,000	39,000	39,000
F		0	0	0	0	0	0	0	0	0	0	0	0	0	0
Telescoping condition (%)															
Tele.1	0	0	46	0	0	92	46	0	0	0	92	46	0	0	0
Tele.2	0	0	0	46	0	0	0	46	46	0	0	46	46	46	0
Tele.3	0	0	0	0	46	0	0	0	46	46	0	0	46	46	46
Tele.4	0	0	0	0	0	46	0	0	0	46	92	0	0	46	92
G	16	12	10	9	6	5	8	8	6	5	5	6	6	5	4

COUNTERWEIGHT 40,600 lbs (18.4 t) ON OUTRIGGER FULLY EXTEND 23'7-1/2" (7.2 m) SPREAD 360° ROTATION																	
A	3	2	6	7	1	2	7	1	6	7	8	1	8	1	1	9	
B	17	12	23	25	5	13	26	6	24	27	28	7	29	8	9	30	
D	C	98.9' (30.2 m)				113.4' (34.6 m)				127.9' (39.0 m)				142.3' (43.4 m)		156.8' (47.8 m)	167.3' (51.0 m)
	C																
8'																	
10'																	
12'																	
15'																	
20'		65,900	62,400	59,500	52,500	45,300	49,600	45,400	40,100								
25'		65,200	62,400	54,800	46,500	39,500	49,600	45,400	39,900	39,000	37,300	36,200	32,000		27,300		
30'		59,100	62,400	50,100	41,700	34,600	49,600	44,000	36,600	39,000	37,300	36,200	32,000	30,000	27,300	24,700	
35'		51,300	53,800	45,400	37,800	30,800	47,000	40,100	33,100	39,000	37,300	36,200	32,000	30,000	27,300	24,700	
40'		41,200	43,700	41,500	34,700	27,700	42,800	36,900	30,000	37,800	37,300	35,900	30,900	30,000	27,300	24,700	
45'		34,000	36,300	36,800	32,000	25,100	35,400	34,200	27,400	35,200	35,600	33,600	29,000	30,000	27,300	24,700	
50'		28,500	30,800	31,200	29,700	23,000	29,900	31,700	25,200	30,000	30,800	31,200	26,800	29,400	27,200	24,700	
55'		24,300	26,400	26,800	27,600	21,100	25,600	27,400	23,300	25,700	26,500	26,900	24,900	26,100	25,800	24,700	
60'		20,700	22,900	23,300	24,600	19,600	22,100	23,900	21,700	22,200	23,000	23,400	23,300	22,600	24,000	23,300	
65'		17,900	20,000	20,400	21,700	18,200	19,300	21,000	20,300	19,400	20,100	20,500	21,500	19,800	21,100	20,500	
70'		15,500	17,600	18,000	19,300	17,000	16,900	18,600	19,000	17,000	17,700	18,100	19,100	17,400	18,700	18,100	
75'		13,600	15,600	15,900	17,200	16,000	14,800	16,500	17,500	14,900	15,700	16,100	17,100	15,400	16,700	16,000	
80'		11,900	13,800	14,200	15,500	15,100	13,100	14,700	15,800	13,200	13,900	14,300	15,300	13,600	14,900	14,300	
85'		10,400	12,300	12,700	14,000	14,200	11,600	13,200	14,200	11,700	12,400	12,800	13,800	12,100	13,400	12,800	
90'		9,200	11,100	11,400	12,700	12,900	10,300	11,900	12,900	10,400	11,100	11,500	12,400	10,800	12,100	11,400	
95'							9,100	10,700	11,700	9,200	9,900	10,300	11,200	9,600	10,900	10,300	
100'							8,100	9,700	10,700	8,200	8,900	9,300	10,200	8,600	9,900	9,200	
105'							7,300	8,900	9,900	7,300	8,000	8,400	9,300	7,700	8,900	8,300	
110'										6,500	7,200	7,500	8,500	6,800	8,100	7,500	
115'										5,800	6,500	6,800	7,800	6,100	7,300	6,700	
120'										5,100	5,800	6,200	7,200	5,400	6,700	6,000	
125'														4,800	6,100	5,400	
130'														4,300	5,600	4,800	
135'														3,900	5,100	4,300	
140'															3,900	3,800	
145'																	
150'																	
155'																	
160'																	
165'																	
170'																	
175'																	
E		39,000	39,000	39,000	39,000	39,000	39,000	39,000	39,000	39,000	37,300	36,200	32,000	30,000	27,300	24,700	
F		0	0	0	0	0	0	0	0	0	0	0	0	0	0	0	
Telescoping condition (%)																	
Tele.1	92	46	0	0	0	92	46	0	92	92	46	0	92	46	92	100	
Tele.2	46	46	92	46	0	46	46	46	92	46	92	92	92	92	92	100	
Tele.3	46	46	46	46	92	46	46	92	46	46	92	92	92	92	92	100	
Tele.4	0	46	46	46	92	92	46	92	46	92	46	92	46	92	92	100	
G	5	4	4	4	4	4	4	4	4	4	4	4	4	4	4	4	

\*with the special equipment

A : Boom block

B : Boom number

C : Boom length in feet

D : Load radius in feet

E : Maximum capacity without boom pin

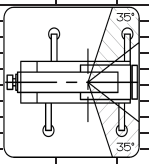
F : Minimum boom angle (°) for indicator length (no load)

G : Number of parts of line

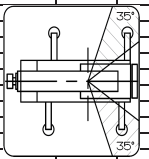
NOTE: The lifting capacity data stored in the LOAD MOMENT INDICATOR (AML-E2) is based on the standard number of parts of line listed in the chart.

# GT-1200XL-2 RATED LIFTING CAPACITIES (IN POUNDS)

COUNTERWEIGHT 40,600 lbs (18.4 t) ON OUTRIGGER FULLY EXTEND 23'7-1/2" (7.2 m) SPREAD															
SMART CHART															
A	1	5	4	3	1	5	4	3	2	1	4	3	2	1	
B	1	21	18	14	2	22	19	15	10	3	20	16	11	4	
D \ C	41.0' (12.5 m)	41.0' (12.5 m)	55.5' (16.9 m)				70.0' (21.3 m)				84.4' (25.7 m)				
8'	201,800	186,700	143,300	127,900	88,200	77,200									
10'	180,100	180,100	143,300	127,900	88,200	77,200	122,600	121,900	88,200	77,200	65,700				
12'	160,000	160,000	143,300	127,900	88,200	77,200	122,600	121,900	88,200	77,200	60,200				
15'	134,100	134,100	133,800	127,900	88,200	75,600	117,400	121,900	88,200	77,200	53,600	88,800	86,600	77,200	57,600
20'	103,900	103,900	103,500	104,500	88,200	65,000	101,000	104,200	88,200	71,200	45,100	85,100	86,600	75,800	49,400
25'	83,700	83,700	83,200	84,300	85,100	57,300	82,800	84,000	85,500	63,500	39,000	75,500	85,100	68,300	43,200
30'	67,900	67,900	67,200	68,600	69,700	51,300	66,600	68,300	70,200	57,500	34,300	67,000	69,700	62,200	38,500
35'			53,800	55,000	56,100	46,600	53,200	54,700	56,600	52,000	30,600	54,200	56,100	57,200	34,700
40'			44,300	45,500	46,500	42,900	43,700	45,200	47,000	47,100	27,700	44,700	46,500	48,400	31,600
45'			37,200	38,400	39,400	40,100	36,600	38,100	39,800	41,100	25,200	37,500	39,300	41,200	28,900
50'							31,200	32,600	34,300	35,600	23,200	32,000	33,800	35,600	26,600
55'							26,400	28,200	29,900	31,200	21,600	27,500	29,400	31,200	24,600
60'							22,300	24,100	26,300	27,600	20,300	23,300	25,600	27,500	22,900
65'												19,900	22,100	24,400	21,400
70'												17,100	19,200	21,600	20,200
75'												14,700	16,900	19,200	19,100
80'															
85'															
90'															
95'															
100'															
105'															
110'															
115'															
120'															
125'															
130'															
135'															
140'															
145'															
150'															
155'															
160'															
165'															
170'															
175'															
E	39,000	39,000	39,000	39,000	39,000	39,000	39,000	39,000	39,000	39,000	39,000	39,000	39,000	39,000	39,000
F	0	0	0	0	0	0	0	0	0	0	0	0	0	0	0
Telescoping condition (%)															
Tele.1	0	0	46	0	0	0	92	46	0	0	0	92	46	0	0
Tele.2	0	0	0	46	0	0	0	46	46	0	0	46	46	46	0
Tele.3	0	0	0	0	46	0	0	0	46	46	0	0	46	46	46
Tele.4	0	0	0	0	0	46	0	0	0	46	92	0	0	46	92
G	16	12	10	9	6	5	8	8	6	5	5	6	6	5	4



COUNTERWEIGHT 40,600 lbs (18.4 t) ON OUTRIGGER FULLY EXTEND 23'7-1/2" (7.2 m) SPREAD																
SMART CHART																
A	3	2	6	7	1	2	7	1	6	7	8	1	8	1	1	9
B	17	12	23	25	5	13	26	6	24	27	28	7	29	8	9	30
D \ C	98.9' (30.2 m)				113.4' (34.6 m)				127.9' (39.0 m)				142.3' (43.4 m)		156.8' (47.8 m)	167.3' (51.0 m)
8'																
10'																
12'																
15'																
20'	65,900	62,400	59,500	52,500	45,300	49,600	45,400	40,100								
25'	65,200	62,400	54,800	46,500	39,500	49,600	45,400	39,900	39,000	37,300	36,200	32,000		27,300		
30'	59,100	62,400	50,100	41,700	34,600	49,600	44,000	36,600	39,000	37,300	36,200	32,000	30,000	27,300	24,700	
35'	53,500	57,400	45,400	37,800	30,800	47,000	40,100	33,100	39,000	37,300	36,200	32,000	30,000	27,300	24,700	20,300
40'	45,800	47,800	41,500	34,700	27,700	43,300	36,900	30,000	37,300	35,900	30,900	30,000	30,000	27,300	24,700	20,300
45'	38,600	40,600	38,100	32,000	25,100	39,900	34,200	27,400	35,200	35,600	33,600	29,000	30,000	27,300	24,700	20,300
50'	33,100	35,000	35,200	29,700	23,000	34,400	31,900	25,200	32,700	33,200	31,500	26,800	29,400	27,200	24,700	20,300
55'	28,700	30,600	31,000	27,600	21,100	30,000	29,900	23,300	30,100	30,800	29,600	24,900	27,500	25,800	24,700	20,300
60'	24,600	26,900	27,300	25,800	19,600	26,300	27,800	21,700	26,300	27,100	27,500	23,300	25,700	24,400	23,600	20,300
65'	21,200	23,700	24,100	24,200	18,200	22,800	24,700	20,300	22,900	23,700	24,100	21,800	23,300	23,100	22,300	20,300
70'	18,300	20,700	21,300	22,600	17,000	19,900	21,800	19,000	20,100	20,900	21,300	20,600	20,500	21,800	21,000	19,700
75'	15,900	18,300	18,800	20,200	16,000	17,500	19,400	18,000	17,600	18,500	18,900	19,400	18,100	19,500	18,800	18,700
80'	13,900	16,200	16,700	18,100	15,100	15,400	17,300	17,000	15,500	16,400	16,800	17,900	16,000	17,500	16,800	16,800
85'	12,100	14,400	14,900	16,400	14,300	13,600	15,500	16,100	13,700	14,600	15,000	16,200	14,200	15,700	14,900	14,900
90'	10,700	13,000	13,400	14,900	13,600	12,000	13,900	15,100	12,100	13,000	13,400	14,600	12,600	14,100	13,300	13,300
95'						10,600	12,500	13,700	10,700	11,600	12,000	13,200	11,200	12,700	11,900	11,900
100'						9,400	11,300	12,500	9,500	10,300	10,800	11,900	10,000	11,500	10,600	10,700
105'						8,400	10,300	11,500	8,400	9,300	9,700	10,800	8,900	10,400	9,500	9,600
110'									7,500	8,300	8,700	9,900	7,900	9,400	8,600	8,600
115'									6,600	7,500	7,900	9,000	7,000	8,500	7,700	7,700
120'									5,900	6,700	7,200	8,300	6,200	7,700	6,900	6,900
125'													5,500	7,000	6,100	6,100
130'													4,900	6,400	5,500	5,500
135'													4,400	5,700	4,900	4,900
140'														4,400	4,400	4,300
145'															3,900	3,800
150'																
155'																
160'																
165'																
170'																
175'																
E	39,000	39,000	39,000	39,000	39,000	39,000	39,000	39,000	39,000	37,300	36,200	32,000	30,000	27,300	24,700	20,300
F	0	0	0	0	0	0	0	0	0	0	0	0	0	0	0	0
Telescoping condition (%)																
Tele.1	92	46	0	0	0	92	46	0	92	92	46	0	92	46	92	100
Tele.2	46	46	92	46	0	46	46	46	92	46	92	92	92	92	92	100
Tele.3	46	46	46	46	92	46	46	46	46	46	92	92	92	92	92	100
Tele.4	0	46	46	92	92	46	92	92	46	92	46	92	46	92	92	100
G	5	4	4	4	4	4	4	4	4	4	4	4	4	4	4	4



\*with the special equipment

- A : Boom block
- B : Boom number
- C : Boom length in feet
- D : Load radius in feet
- E : Maximum capacity without boom pin
- F : Minimum boom angle (°) for indicator length (no load)
- G : Number of parts of line

NOTE: The lifting capacity data stored in the LOAD MOMENT INDICATOR (AML-E2) is based on the standard number of parts of line listed in the chart.

# GT-1200XL-2 RATED LIFTING CAPACITIES (IN POUNDS)

COUNTERWEIGHT 17,900 lbs (8.1 t) ON OUTRIGGER FULLY EXTEND 23'7-1/2" (7.2 m) SPREAD 360° ROTATION															
A	1	5	4	3	1	5	4	3	2	1	4	3	2	1	
B	1	21	18	14	2	22	19	15	10	3	20	16	11	4	
D	C		55.5' (16.9 m)				70.0' (21.3 m)				84.4' (25.7 m)				
	41.0' (12.5 m)	41.0' (12.5 m)													
8'	201,800	186,700	143,300	127,900	88,200	77,200									
10'	175,500	175,500	143,300	127,900	88,200	77,200	122,600	121,900	88,200	77,200	65,700				
12'	153,200	153,200	143,300	127,900	88,200	77,200	122,600	121,900	88,200	77,200	60,200			86,600	77,200
15'	127,600	127,600	127,300	127,900	88,200	75,600	117,400	121,900	88,200	77,200	53,600	88,800	86,600	77,200	57,600
20'	97,900	97,900	97,500	98,500	88,200	65,000	97,000	98,300	88,200	71,200	45,100	85,100	86,600	75,800	49,400
25'	65,300	65,300	64,300	66,200	67,900	57,300	63,000	65,300	68,100	63,500	39,000	64,200	67,000	68,300	43,200
30'	46,800	46,800	46,000	47,700	49,100	50,200	45,000	47,000	49,500	51,300	34,300	46,100	48,600	51,200	38,500
35'			34,700	36,200	37,500	38,500	33,900	35,800	38,000	39,700	30,600	34,900	37,200	39,600	34,700
40'			27,100	28,500	29,700	30,700	26,300	28,100	30,200	31,900	27,700	27,400	29,500	31,900	31,600
45'			21,600	23,000	24,100	25,000	20,900	22,600	24,600	26,100	25,200	21,900	24,000	26,200	27,500
50'							16,800	18,400	20,300	21,800	22,000	17,800	19,800	21,900	23,100
55'							13,600	15,200	17,100	18,500	18,700	14,500	16,500	18,600	19,800
60'							11,100	12,600	14,400	15,900	16,000	11,900	13,800	15,900	17,000
65'												9,800	11,700	13,700	14,800
70'												8,100	9,900	11,900	13,000
75'												6,600	8,400	10,400	11,500
80'															
85'															
90'															
95'															
100'															
105'															
110'															
115'															
120'															
125'															
130'															
135'															
140'															
145'															
150'															
155'															
160'															
165'															
170'															
175'															
E	39,000	39,000	39,000	39,000	39,000	39,000	39,000	39,000	39,000	39,000	39,000	39,000	39,000	39,000	39,000
F	0	0	0	0	0	0	0	0	0	0	0	0	0	0	0
Telescoping condition (%)															
Tele.1	0	0	46	0	0	0	92	46	0	0	0	92	46	0	0
Tele.2	0	0	0	46	0	0	0	46	46	0	0	46	46	46	0
Tele.3	0	0	0	0	46	0	0	0	46	46	0	0	46	46	46
Tele.4	0	0	0	0	0	46	0	0	0	46	92	0	0	46	92
G	16	12	10	9	6	5	8	8	6	5	5	6	6	5	4

COUNTERWEIGHT 17,900 lbs (8.1 t) ON OUTRIGGER FULLY EXTEND 23'7-1/2" (7.2 m) SPREAD 360° ROTATION																						
A	3	2	6	7	1	2	7	1	6	7	8	1	8	1	1	9						
B	17	12	23	25	5	13	26	6	24	27	28	7	29	8	9	30						
D	C				98.9' (30.2 m)				113.4' (34.6 m)				127.9' (39.0 m)				142.3' (43.4 m)		156.8' (47.8 m)		167.3' (51.0 m)	
8'																						
10'																						
12'																						
15'																						
20'	65,900	62,400	59,500	52,500	45,300	49,600	45,400	40,100														
25'	65,200	62,400	54,800	46,500	39,500	49,600	45,400	39,900	39,000	37,300	36,200	32,000		27,300								
30'	47,400	50,200	50,100	41,700	34,600	49,200	44,000	36,600	39,000	37,300	36,200	32,000	30,000	27,300	24,700							
35'	36,100	38,700	39,200	37,800	30,800	37,700	39,800	33,100	37,800	37,300	36,200	32,000	30,000	27,300	24,700	20,300						
40'	26,500	31,000	31,400	33,000	27,700	30,100	32,100	30,000	30,100	31,000	31,500	30,800	30,000	27,300	24,700	20,300						
45'	23,000	25,400	25,800	27,300	25,100	24,500	26,400	27,400	24,600	25,400	25,900	27,000	25,000	26,500	24,700	20,300						
50'	18,900	21,200	21,600	23,000	23,000	20,300	22,200	23,300	20,400	21,200	21,600	22,700	20,800	22,300	21,600	20,300						
55'	15,700	17,900	18,300	19,700	19,900	17,100	18,800	19,900	17,100	17,900	18,400	19,400	17,500	19,000	18,300	18,300						
60'	13,100	15,200	15,600	16,900	17,200	14,400	16,200	17,200	14,500	15,300	15,700	16,700	14,900	16,300	15,600	15,600						
65'	10,900	13,000	13,400	14,700	14,900	12,300	14,000	15,000	12,300	13,100	13,500	14,500	12,800	14,100	13,400	13,400						
70'	9,100	11,200	11,500	12,900	13,100	10,400	12,100	13,100	10,600	11,300	11,700	12,700	11,000	12,300	11,600	11,600						
75'	7,600	9,600	10,000	11,300	11,500	8,900	10,600	11,600	9,000	9,700	10,100	11,100	9,400	10,800	10,100	10,100						
80'	6,300	8,300	8,700	9,900	10,100	7,600	9,200	10,200	7,700	8,400	8,800	9,800	8,100	9,400	8,800	8,800						
85'	5,200	7,200	7,500	8,800	9,000	6,400	8,100	9,100	6,500	7,300	7,700	8,600	6,900	8,200	7,600	7,600						
90'	4,300	6,200	6,600	7,800	8,000	5,400	7,100	8,000	5,500	6,200	6,600	7,600	5,900	7,200	6,500	6,500						
95'						4,500	6,200	7,200	4,600	5,300	5,700	6,700	5,000	6,300	5,600	5,600						
100'						3,700	5,400	6,400	3,800	4,500	4,900	5,900	4,200	5,500	4,900	4,800						
105'							4,700	5,700		3,800	4,200	5,200		4,800	4,100	4,100						
110'												4,500										
115'												4,000										
120'																						
125'																						
130'																						
135'																						
140'																						
145'																						
150'																						
155'																						
160'																						
165'																						
170'																						
175'																						
E	39,000	39,000	39,000	39,000	39,000	39,000	39,000	39,000	39,000	39,000	37,300	36,200	32,000	30,000	27,300	24,700	20,300					
F	0	0	0	0	0	0	0	0	0	0	0	0	0	31	0	39	47					
Telescoping condition (%)																						
Tele.1	92	46	0	0	0	92	46	0	92	92	46	0	92	46	92	100						
Tele.2	46	46	92	46	0	46	46	46	92	46	92	92	92	92	92	100						
Tele.3	46	46	46	46	92	46	46	92	46	46	92	92	92	92	92	100						
Tele.4	0	46	46	92	92	46	92	92	46	92	46	92	46	92	92	100						
G	5	4	4	4	4	4	4	4	4	4	4	4	4	4	4	4						

\*with the special equipment

A : Boom block

B : Boom number

C : Boom length in feet

D : Load radius in feet

E : Maximum capacity without boom pin

F : Minimum boom angle (°) for indicator length (no load)

G : Number of parts of line

NOTE: The lifting capacity data stored in the LOAD MOMENT INDICATOR (AML-E2) is based on the standard number of parts of line listed in the chart.





# GT-1200XL-2 RATED LIFTING CAPACITIES (IN POUNDS)

COUNTERWEIGHT 55,100 lbs (25.0 t) ON OUTRIGGER FULLY EXTEND 23'7-1/2" (7.2 m) SPREAD 360° ROTATION 33.8' (10.3 m) JIB													
Load radius in feet	Boom Length in Feet, Jib Offset angle (°)												
	41.0' (12.5 m) boom			98.9' (30.2 m) boom			156.8' (47.8 m) boom			167.3' (51.0 m) boom			
	3.5°	25.0°	45.0°	3.5°	25.0°	45.0°	3.5°	25.0°	45.0°	3.5°	25.0°	45.0°	
10'	14,600												
12'	14,600												
15'	14,600												
20'	14,600												
25'	14,600	14,600											
30'	14,600	13,300	10,600	14,600									
35'	14,600	12,100	9,900	14,600									
40'	14,100	11,000	9,300	14,600	13,100								
45'	12,500	10,200	8,800	14,600	12,300	9,600	12,100						
50'	11,300	9,600	8,500	14,600	11,700	9,300	12,100	11,400			11,000		
55'	10,300	9,000	8,300	14,600	11,200	9,000	12,100	11,000			11,000	10,800	
60'	9,400	8,600		14,600	10,700	8,700	12,100	10,600	8,700		11,000	10,400	
65'	8,700	8,400		13,800	10,200	8,500	12,100	10,300	8,500		11,000	10,100	8,400
70'				12,900	9,800	8,300	12,000	9,900	8,300		11,000	9,800	8,200
75'				12,200	9,500	8,200	11,500	9,600	8,100		10,700	9,500	8,100
80'				11,600	9,100	8,000	11,000	9,400	8,000		10,300	9,300	7,900
85'				11,000	8,900	7,900	10,600	9,100	7,800		9,900	9,000	7,800
90'				10,400	8,600	7,800	10,200	8,900	7,700		9,500	8,700	7,600
95'				10,000	8,400	7,700	9,800	8,600	7,500		9,200	8,400	7,500
100'				9,500	8,200		9,500	8,400	7,400		8,900	8,200	7,400
105'				9,100	8,000		9,200	8,200	7,300		8,600	8,000	7,300
110'				8,800	7,900		8,900	8,100	7,200		8,400	7,700	7,200
115'				8,500	7,900		8,600	7,900	7,100		8,200	7,500	7,100
120'				8,200			8,400	7,700	7,100		7,900	7,300	7,000
125'				8,100			8,200	7,500	7,000		7,700	7,200	6,900
130'							7,500	7,400	6,900		7,400	7,000	6,800
135'							6,800	7,200	6,900		6,800	6,800	6,600
140'							6,300	6,600			6,200	6,600	6,500
145'							5,700	6,100			5,700	6,000	6,200
150'							5,200	5,500			5,200	5,500	
155'							4,800	5,000			4,700	5,000	
160'							4,300	4,600			4,300	4,500	
165'							3,900	4,100			3,900	4,100	
170'							3,600	3,700			3,500	3,700	
175'							3,200				3,200	3,300	
180'							2,900				2,800		
185'											2,500		
Telescoping condition (%)													
Tele.1	0			46			92			100			
Tele.2	0			46			92			100			
Tele.3	0			46			92			100			
Tele.4	0			46			92			100			
A	1			2			1			9			
G	1			1			1			1			

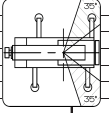
COUNTERWEIGHT 55,100 lbs (25.0 t) ON OUTRIGGER FULLY EXTEND 23'7-1/2" (7.2 m) SPREAD 360° ROTATION 58.7' (17.9 m) JIB												
Load radius in feet	Boom Length in Feet, Jib Offset angle (°)											
	41.0' (12.5 m) boom			98.9' (30.2 m) boom			156.8' (47.8 m) boom			167.3' (51.0 m) boom		
	3.5°	25.0°	45.0°	3.5°	25.0°	45.0°	3.5°	25.0°	45.0°	3.5°	25.0°	45.0°
10'												
12'												
15'												
20'												
25'												
30'	11,300											
35'	10,200			9,100								
40'	9,300	7,300		9,100								
45'	8,500	6,800		9,100								
50'	7,900	6,500		9,100			7,600			6,600		
55'	7,300	6,100	5,500	9,100	6,800		7,600			6,600		
60'	6,900	5,800	5,300	9,000	6,600		7,600			6,600		
65'	6,400	5,600	5,000	8,500	6,300		7,600			6,600		
70'	6,100	5,400	4,800	8,100	6,100	5,300	7,600	6,100		6,600		
75'	5,800	5,100	4,600	7,700	5,900	5,100	7,500	5,900		6,600	5,900	
80'	5,400	4,800	4,500	7,400	5,800	5,000	7,300	5,800		6,600	5,700	
85'	5,000	4,600		7,100	5,600	4,800	7,200	5,600	5,000	6,600	5,600	
90'	4,700	4,400		6,800	5,400	4,700	7,000	5,500	4,900	6,600	5,500	4,800
95'				6,500	5,300	4,600	6,800	5,400	4,700	6,600	5,300	4,800
100'				6,300	5,200	4,500	6,700	5,300	4,600	6,500	5,200	4,700
105'				6,000	5,000	4,400	6,500	5,100	4,500	6,400	5,100	4,500
110'				5,800	4,900	4,300	6,300	5,000	4,400	6,200	5,000	4,500
115'				5,600	4,700	4,200	6,200	4,900	4,300	6,100	4,900	4,400
120'				5,400	4,600	4,200	6,000	4,900	4,300	6,000	4,800	4,300
125'				5,300	4,500		5,800	4,800	4,200	5,800	4,700	4,200
130'				5,100	4,300		5,700	4,700	4,100	5,700	4,700	4,100
135'				4,900	4,300		5,600	4,600	4,100	5,600	4,600	4,100
140'				4,700	4,200		5,400	4,500	4,000	5,400	4,500	4,000
145'				4,500			5,300	4,500	3,900	5,300	4,400	3,900
150'				4,400			5,200	4,400	3,900	5,200	4,400	3,900
155'							5,100	4,300	3,900	5,100	4,300	3,800
160'							4,800	4,200	3,800	4,700	4,200	3,800
165'							4,400	4,100		4,300	4,100	3,700
170'							4,000	4,000		3,900	4,100	3,700
175'							3,700	4,000		3,500	4,000	
180'							3,400	3,700		3,200	3,600	
185'							3,000	3,300		2,900	3,300	
Telescoping condition (%)												
Tele.1	0			46			92			100		
Tele.2	0			46			92			100		
Tele.3	0			46			92			100		
Tele.4	0			46			92			100		
A	1			2			1			9		
G	1			1			1			1		

A : Boom block  
G : Number of parts of line

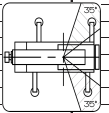
NOTE: The lifting capacity data stored in the LOAD MOMENT INDICATOR (AML-E2) is based on the standard number of parts of line listed in the chart.

# GT-1200XL-2 RATED LIFTING CAPACITIES (IN POUNDS)

COUNTERWEIGHT 55,100 lbs (25.0 t) ON OUTRIGGER FULLY EXTEND 23'7-1/2" (7.2 m) SPREAD SMART CHART 33.8' (10.3 m) JIB												
Load radius in feet	Boom Length in Feet, Jib Offset angle (°)											
	41.0' (12.5 m) boom			98.9' (30.2 m) boom			156.8' (47.8 m) boom			167.3' (51.0 m) boom		
	3.5°	25.0°	45.0°	3.5°	25.0°	45.0°	3.5°	25.0°	45.0°	3.5°	25.0°	45.0°
10'	14,600											
12'	14,600											
15'	14,600											
20'	14,600											
25'	14,600	14,600										
30'	14,600	13,300	10,600	14,600								
35'	14,600	12,100	9,900	14,600								
40'	14,100	11,000	9,300	14,600	13,100							
45'	12,500	10,200	8,800	14,600	12,300	9,600	12,100					
50'	11,300	9,600	8,500	14,600	11,700	9,300	12,100	11,400				
55'	10,300	9,000	8,300	14,600	11,200	9,000	12,100	11,000				
60'	9,400	8,600		14,600	10,700	8,700	12,100	10,600	8,700	11,000	10,400	
65'	8,700	8,400		13,800	10,200	8,500	12,100	10,300	8,500	11,000	10,100	8,400
70'				12,900	9,800	8,300	12,000	9,900	8,300	11,000	9,800	8,200
75'				12,200	9,500	8,200	11,500	9,600	8,100	10,700	9,500	8,100
80'				11,600	9,100	8,000	11,000	9,400	8,000	10,300	9,300	7,900
85'				11,000	8,900	7,900	10,600	9,100	7,800	9,900	9,000	7,800
90'				10,400	8,600	7,800	10,200	8,900	7,700	9,500	8,700	7,600
95'				10,000	8,400	7,700	9,800	8,600	7,500	9,200	8,400	7,500
100'				9,500	8,200		9,500	8,400	7,400	8,900	8,200	7,400
105'				9,100	8,000		9,200	8,200	7,300	8,600	8,000	7,300
110'				8,800	7,900		8,900	8,100	7,200	8,400	7,700	7,200
115'				8,500	7,900		8,600	7,900	7,100	8,200	7,500	7,100
120'				8,200			8,400	7,700	7,100	7,900	7,300	7,000
125'				8,100			8,200	7,500	7,000	7,700	7,200	6,900
130'							8,000	7,400	6,900	7,500	7,000	6,800
135'							7,800	7,200	6,900	7,400	6,800	6,600
140'							7,400	7,100		7,200	6,700	6,500
145'							6,800	7,000		6,700	6,600	6,400
150'							6,200	6,500		6,100	6,500	
155'							5,700	6,000		5,600	5,900	
160'							5,200	5,400		5,100	5,400	
165'							4,700	4,900		4,600	4,900	
170'							4,200	4,400		4,100	4,400	
175'							3,800			3,700	3,900	
180'							3,400			3,300		
185'										3,000		
Telescoping condition (%)												
Tele.1	0			46			92			100		
Tele.2	0			46			92			100		
Tele.3	0			46			92			100		
Tele.4	0			46			92			100		
A	1			2			1			9		
G	1			1			1			1		



COUNTERWEIGHT 55,100 lbs (25.0 t) ON OUTRIGGER FULLY EXTEND 23'7-1/2" (7.2 m) SPREAD SMART CHART 58.7' (17.9 m) JIB												
Load radius in feet	Boom Length in Feet, Jib Offset angle (°)											
	41.0' (12.5 m) boom			98.9' (30.2 m) boom			156.8' (47.8 m) boom			167.3' (51.0 m) boom		
	3.5°	25.0°	45.0°	3.5°	25.0°	45.0°	3.5°	25.0°	45.0°	3.5°	25.0°	45.0°
10'												
12'												
15'												
20'												
25'												
30'	11,300											
35'	10,200			9,100								
40'	9,300	7,300		9,100								
45'	8,500	6,800		9,100								
50'	7,900	6,500		9,100								
55'	7,300	6,100	5,500	9,100	6,800							
60'	6,900	5,800	5,300	9,000	6,600			7,600		6,600		
65'	6,400	5,600	5,000	8,500	6,300			7,600		6,600		
70'	6,100	5,400	4,800	8,100	6,100	5,300	7,600	6,100		6,600		
75'	5,800	5,100	4,600	7,700	5,900	5,100	7,500	5,900		6,600	5,900	
80'	5,400	4,800	4,500	7,400	5,800	5,000	7,300	5,800		6,600	5,700	
85'	5,000	4,600		7,100	5,600	4,800	7,200	5,600	5,000	6,600	5,600	
90'	4,700	4,400		6,800	5,400	4,700	7,000	5,500	4,900	6,600	5,500	4,800
95'				6,500	5,300	4,600	6,800	5,400	4,700	6,600	5,300	4,800
100'				6,300	5,200	4,500	6,700	5,300	4,600	6,500	5,200	4,700
105'				6,000	5,000	4,400	6,500	5,100	4,500	6,400	5,100	4,500
110'				5,800	4,900	4,300	6,300	5,000	4,400	6,200	5,000	4,500
115'				5,600	4,700	4,200	6,200	4,900	4,300	6,100	4,900	4,400
120'				5,400	4,600	4,200	6,000	4,900	4,300	6,000	4,800	4,300
125'				5,300	4,500		5,800	4,800	4,200	5,800	4,700	4,200
130'				5,100	4,300		5,700	4,700	4,100	5,700	4,700	4,100
135'				4,900	4,300		5,600	4,600	4,100	5,600	4,600	4,100
140'				4,700	4,200		5,400	4,500	4,000	5,400	4,500	4,000
145'				4,500			5,300	4,500	3,900	5,300	4,400	3,900
150'				4,400			5,200	4,400	3,900	5,200	4,400	3,900
155'							5,100	4,300	3,900	5,100	4,300	3,800
160'							5,000	4,200	3,800	5,000	4,200	3,800
165'							4,900	4,100		4,900	4,100	3,700
170'							4,800	4,000		4,800	4,100	3,700
175'							4,300	4,000		4,200	4,000	
180'							3,900	3,900		3,800	3,900	
185'							3,600	3,900		3,400	3,900	
Telescoping condition (%)												
Tele.1	0			46			92			100		
Tele.2	0			46			92			100		
Tele.3	0			46			92			100		
Tele.4	0			46			92			100		
A	1			2			1			9		
G	1			1			1			1		



A : Boom block  
G : Number of parts of line

NOTE: The lifting capacity data stored in the LOAD MOMENT INDICATOR (AML-E2) is based on the standard number of parts of line listed in the chart.

# GT-1200XL-2 RATED LIFTING CAPACITIES (IN POUNDS)

COUNTERWEIGHT 40,600 lbs (18.4 t) ON OUTRIGGER FULLY EXTEND 23'7-1/2" (7.2 m) SPREAD 360° ROTATION 33.8' (10.3 m) JIB												
Load radius in feet	Boom Length in Feet, Jib Offset angle (°)											
	41.0' (12.5 m) boom			98.9' (30.2 m) boom			156.8' (47.8 m) boom			167.3' (51.0 m) boom		
	3.5°	25.0°	45.0°	3.5°	25.0°	45.0°	3.5°	25.0°	45.0°	3.5°	25.0°	45.0°
10'	14,600											
12'	14,600											
15'	14,600											
20'	14,600											
25'	14,600	14,600										
30'	14,600	13,300	10,600	14,600								
35'	14,600	12,100	9,900	14,600								
40'	14,100	11,000	9,300	14,600	13,100							
45'	12,500	10,200	8,800	14,600	12,300	9,600	12,100					
50'	11,300	9,600	8,500	14,600	11,700	9,300	12,100	11,400			11,000	
55'	10,300	9,000	8,300	14,600	11,200	9,000	12,100	11,000			11,000	10,800
60'	9,400	8,600		14,600	10,700	8,700	12,100	10,600	8,700	11,000	10,400	
65'	8,700	8,400		13,800	10,200	8,500	12,100	10,300	8,500	11,000	10,100	8,400
70'				12,900	9,800	8,300	12,000	9,900	8,300	11,000	9,800	8,200
75'				12,200	9,500	8,200	11,500	9,600	8,100	10,700	9,500	8,100
80'				11,600	9,100	8,000	11,000	9,400	8,000	10,300	9,300	7,900
85'				11,000	8,900	7,900	10,600	9,100	7,800	9,900	9,000	7,800
90'				10,400	8,600	7,800	10,200	8,900	7,700	9,500	8,700	7,600
95'				10,000	8,400	7,700	9,800	8,600	7,500	9,200	8,400	7,500
100'				9,500	8,200		9,500	8,400	7,400	8,900	8,200	7,400
105'				9,100	8,000		9,000	8,200	7,300	8,600	8,000	7,300
110'				8,700	7,900		8,100	8,100	7,200	8,000	7,700	7,200
115'				7,900	7,900		7,300	7,900	7,100	7,300	7,500	7,100
120'				7,200			6,600	7,200	7,100	6,500	7,100	7,000
125'				6,600			6,000	6,500	6,700	5,900	6,400	6,700
130'							5,400	5,800	6,100	5,300	5,800	6,100
135'							4,900	5,200	5,400	4,800	5,200	5,400
140'							4,300	4,700		4,300	4,700	4,900
145'							3,900	4,200		3,800	4,200	4,300
150'							3,500	3,700		3,400	3,700	
155'							3,100	3,300		3,000	3,300	
160'							2,700	2,900		2,600	2,900	
165'							2,300	2,500		2,300	2,500	
170'							2,000	2,200		1,900	2,100	
175'							1,700			1,600	1,800	
180'							1,500			1,300		
185'												
Telescoping condition (%)												
Tele.1	0			46						92		100
Tele.2	0			46						92		100
Tele.3	0			46						92		100
Tele.4	0			46						92		100
A	1			2						1		9
G	1			1						1		1

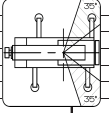
COUNTERWEIGHT 40,600 lbs (18.4 t) ON OUTRIGGER FULLY EXTEND 23'7-1/2" (7.2 m) SPREAD 360° ROTATION 58.7' (17.9 m) JIB												
Load radius in feet	Boom Length in Feet, Jib Offset angle (°)											
	41.0' (12.5 m) boom			98.9' (30.2 m) boom			156.8' (47.8 m) boom			167.3' (51.0 m) boom		
	3.5°	25.0°	45.0°	3.5°	25.0°	45.0°	3.5°	25.0°	45.0°	3.5°	25.0°	45.0°
10'												
12'												
15'												
20'												
25'												
30'	11,300											
35'	10,200			9,100								
40'	9,300	7,300		9,100								
45'	8,500	6,800		9,100								
50'	7,900	6,500		9,100			7,600			6,600		
55'	7,300	6,100	5,500	9,100	6,800		7,600			6,600		
60'	6,900	5,800	5,300	9,000	6,600		7,600			6,600		
65'	6,400	5,600	5,000	8,500	6,300		7,600			6,600		
70'	6,100	5,400	4,800	8,100	6,100	5,300	7,600	6,100		6,600		
75'	5,800	5,100	4,600	7,700	5,900	5,100	7,500	5,900		6,600	5,900	
80'	5,400	4,800	4,500	7,400	5,800	5,000	7,300	5,800		6,600	5,700	
85'	5,000	4,600		7,100	5,600	4,800	7,200	5,600	5,000	6,600	5,600	
90'	4,700	4,400		6,800	5,400	4,700	7,000	5,500	4,900	6,600	5,500	4,800
95'				6,500	5,300	4,600	6,800	5,400	4,700	6,600	5,300	4,800
100'				6,300	5,200	4,500	6,700	5,300	4,600	6,500	5,200	4,700
105'				6,000	5,000	4,400	6,500	5,100	4,500	6,400	5,100	4,500
110'				5,800	4,900	4,300	6,300	5,000	4,400	6,200	5,000	4,500
115'				5,600	4,700	4,200	6,200	4,900	4,300	6,100	4,900	4,400
120'				5,400	4,600	4,200	6,000	4,900	4,300	6,000	4,800	4,300
125'				5,300	4,500		5,800	4,800	4,200	5,800	4,700	4,200
130'				5,100	4,300		5,700	4,700	4,100	5,700	4,700	4,100
135'				4,900	4,300		5,400	4,600	4,100	5,200	4,600	4,100
140'				4,700	4,200		4,900	4,500	4,000	4,700	4,500	4,000
145'				4,500			4,400	4,500	3,900	4,300	4,400	3,900
150'				4,400			3,900	4,400	3,900	3,800	4,400	3,900
155'							3,500	4,100	3,900	3,400	4,100	3,800
160'							3,200	3,700	3,800	3,000	3,600	3,800
165'							2,800	3,300		2,700	3,200	3,500
170'							2,500	2,900		2,400	2,800	3,100
175'							2,200	2,600		2,100	2,500	
180'							1,900	2,200		1,800	2,200	
185'							1,600	1,900		1,500	1,900	
Telescoping condition (%)												
Tele.1	0			46						92		100
Tele.2	0			46						92		100
Tele.3	0			46						92		100
Tele.4	0			46						92		100
A	1			2						1		9
G	1			1						1		1

A : Boom block  
G : Number of parts of line

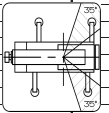
NOTE: The lifting capacity data stored in the LOAD MOMENT INDICATOR (AML-E2) is based on the standard number of parts of line listed in the chart.

# GT-1200XL-2 RATED LIFTING CAPACITIES (IN POUNDS)

Load radius in feet	COUNTERWEIGHT 40,600 lbs (18.4 t) ON OUTRIGGER FULLY EXTEND 23'7-1/2" (7.2 m) SPREAD SMART CHART 33.8' (10.3 m) JIB											
	Boom Length in Feet, Jib Offset angle (°)											
	41.0' (12.5 m) boom			98.9' (30.2 m) boom			156.8' (47.8 m) boom			167.3' (51.0 m) boom		
	3.5°	25.0°	45.0°	3.5°	25.0°	45.0°	3.5°	25.0°	45.0°	3.5°	25.0°	45.0°
10'	14,600											
12'	14,600											
15'	14,600											
20'	14,600											
25'	14,600	14,600										
30'	14,600	13,300	10,600	14,600								
35'	14,600	12,100	9,900	14,600								
40'	14,100	11,000	9,300	14,600	13,100							
45'	12,500	10,200	8,800	14,600	12,300	9,600	12,100					
50'	11,300	9,600	8,500	14,600	11,700	9,300	12,100	11,400				
55'	10,300	9,000	8,300	14,600	11,200	9,000	12,100	11,000				
60'	9,400	8,600		14,600	10,700	8,700	12,100	10,600	8,700	11,000	10,400	
65'	8,700	8,400		13,800	10,200	8,500	12,100	10,300	8,500	11,000	10,100	8,400
70'				12,900	9,800	8,300	12,000	9,900	8,300	11,000	9,800	8,200
75'				12,200	9,500	8,200	11,500	9,600	8,100	10,700	9,500	8,100
80'				11,600	9,100	8,000	11,000	9,400	8,000	10,300	9,300	7,900
85'				11,000	8,900	7,900	10,600	9,100	7,800	9,900	9,000	7,800
90'				10,400	8,600	7,800	10,200	8,900	7,700	9,500	8,700	7,600
95'				10,000	8,400	7,700	9,800	8,600	7,500	9,200	8,400	7,500
100'				9,500	8,200		9,500	8,400	7,400	8,900	8,200	7,400
105'				9,100	8,000		9,200	8,200	7,300	8,600	8,000	7,300
110'				8,800	7,900		8,900	8,100	7,200	8,400	7,700	7,200
115'				8,500	7,900		8,500	7,900	7,100	8,200	7,500	7,100
120'				8,200			7,700	7,700	7,100	7,600	7,300	7,000
125'				7,600			6,900	7,500	7,000	6,800	7,200	6,900
130'							6,200	6,700	6,900	6,100	6,700	6,800
135'							5,600	6,000	6,300	5,500	6,000	6,300
140'							5,000	5,400		4,900	5,400	5,600
145'							4,400	4,800		4,300	4,800	5,000
150'							3,900	4,300		3,800	4,200	
155'							3,500	3,700		3,400	3,700	
160'							3,000	3,300		2,900	3,200	
165'							2,600	2,800		2,500	2,800	
170'							2,200	2,400		2,100	2,400	
175'							1,900			1,800	2,000	
180'							1,600			1,500		
185'												
Telescoping condition (%)												
Tele.1	0			46						92		100
Tele.2	0			46						92		100
Tele.3	0			46						92		100
Tele.4	0			46						92		100
A	1			2						1		9
G	1			1						1		1



Load radius in feet	COUNTERWEIGHT 40,600 lbs (18.4 t) ON OUTRIGGER FULLY EXTEND 23'7-1/2" (7.2 m) SPREAD SMART CHART 58.7' (17.9 m) JIB											
	Boom Length in Feet, Jib Offset angle (°)											
	41.0' (12.5 m) boom			98.9' (30.2 m) boom			156.8' (47.8 m) boom			167.3' (51.0 m) boom		
	3.5°	25.0°	45.0°	3.5°	25.0°	45.0°	3.5°	25.0°	45.0°	3.5°	25.0°	45.0°
10'												
12'												
15'												
20'												
25'												
30'	11,300											
35'	10,200			9,100								
40'	9,300	7,300		9,100								
45'	8,500	6,800		9,100								
50'	7,900	6,500		9,100			7,600			6,600		
55'	7,300	6,100	5,500	9,100	6,800		7,600			6,600		
60'	6,900	5,800	5,300	9,000	6,600		7,600			6,600		
65'	6,400	5,600	5,000	8,500	6,300		7,600			6,600		
70'	6,100	5,400	4,800	8,100	6,100	5,300	7,600	6,100		6,600		
75'	5,800	5,100	4,600	7,700	5,900	5,100	7,500	5,900		6,600	5,900	
80'	5,400	4,800	4,500	7,400	5,800	5,000	7,300	5,800		6,600	5,700	
85'	5,000	4,600		7,100	5,600	4,800	7,200	5,600	5,000	6,600	5,600	
90'	4,700	4,400		6,800	5,400	4,700	7,000	5,500	4,900	6,600	5,500	4,800
95'				6,500	5,300	4,600	6,800	5,400	4,700	6,600	5,300	4,800
100'				6,300	5,200	4,500	6,700	5,300	4,600	6,500	5,200	4,700
105'				6,000	5,000	4,400	6,500	5,100	4,500	6,400	5,100	4,500
110'				5,800	4,900	4,300	6,300	5,000	4,400	6,200	5,000	4,500
115'				5,600	4,700	4,200	6,200	4,900	4,300	6,100	4,900	4,400
120'				5,400	4,600	4,200	6,000	4,900	4,300	6,000	4,800	4,300
125'				5,300	4,500		5,800	4,800	4,200	5,800	4,700	4,200
130'				5,100	4,300		5,700	4,700	4,100	5,700	4,700	4,100
135'				4,900	4,300		5,600	4,600	4,100	5,600	4,600	4,100
140'				4,700	4,200		5,400	4,500	4,000	5,400	4,500	4,000
145'				4,500			5,000	4,500	3,900	4,900	4,400	3,900
150'				4,400			4,500	4,400	3,900	4,400	4,400	3,900
155'							4,000	4,300	3,900	3,900	4,300	3,800
160'							3,600	4,200	3,800	3,400	4,100	3,800
165'							3,200	3,700		3,000	3,600	3,700
170'							2,800	3,300		2,600	3,200	3,500
175'							2,400	2,800		2,300	2,800	
180'							2,100	2,400		1,900	2,400	
185'							1,700	2,100		1,600	2,000	
Telescoping condition (%)												
Tele.1	0			46						92		100
Tele.2	0			46						92		100
Tele.3	0			46						92		100
Tele.4	0			46						92		100
A	1			2						1		9
G	1			1						1		1



A : Boom block  
G : Number of parts of line

NOTE: The lifting capacity data stored in the LOAD MOMENT INDICATOR (AML-E2) is based on the standard number of parts of line listed in the chart.

# GT-1200XL-2 RATED LIFTING CAPACITIES (IN POUNDS)

COUNTERWEIGHT 17,900 lbs (8.1 t) ON OUTRIGGER FULLY EXTEND 23'7-1/2" (7.2 m) SPREAD 360° ROTATION 33.8' (10.3 m) JIB												
Load radius in feet	Boom Length in Feet, Jib Offset angle (°)											
	41.0' (12.5 m) boom			98.9' (30.2 m) boom			156.8' (47.8 m) boom			167.3' (51.0 m) boom		
	3.5°	25.0°	45.0°	3.5°	25.0°	45.0°	3.5°	25.0°	45.0°	3.5°	25.0°	45.0°
10'	14,600											
12'	14,600											
15'	14,600											
20'	14,600											
25'	14,600	14,600										
30'	14,600	13,300	10,600	14,600								
35'	14,600	12,100	9,900	14,600								
40'	14,100	11,000	9,300	14,600	13,100							
45'	12,500	10,200	8,800	14,600	12,300	9,600	12,100					
50'	11,300	9,600	8,500	14,600	11,700	9,300	12,100	11,400				
55'	10,300	9,000	8,300	14,600	11,200	9,000	12,100	11,000				
60'	9,400	8,600		14,600	10,700	8,700	12,100	10,600	8,700	11,000	10,400	
65'	8,700	8,400		13,800	10,200	8,500	12,100	10,300	8,500	11,000	10,100	8,400
70'				12,900	9,800	8,300	12,000	9,900	8,300	11,000	9,800	8,200
75'				11,500	9,500	8,200	11,000	9,600	8,100	10,700	9,500	8,100
80'				10,100	9,100	8,000	9,600	9,400	8,000	9,500	9,300	7,900
85'				8,900	8,900	7,900	8,400	9,100	7,800	8,300	9,000	7,800
90'				7,900	8,600	7,800	7,400	8,200	7,700	7,300	8,200	7,600
95'				7,000	7,500	7,700	6,400	7,300	7,500	6,400	7,200	7,500
100'				6,200	6,800		5,600	6,400	6,900	5,600	6,300	6,900
105'				5,400	5,800		4,900	5,600	6,000	4,800	5,500	6,000
110'				4,700	5,100		4,200	4,900	5,200	4,100	4,800	5,200
115'				4,100	4,400		3,600	4,200	4,500	3,500	4,100	4,500
120'				3,600			3,000	3,600	3,900	3,000	3,500	3,900
125'				3,100			2,500	3,000	3,300	2,500	3,000	3,300
130'							2,000	2,500	2,800	2,000	2,500	2,800
135'							1,600	2,000	2,300	1,500	2,000	2,300
140'								1,500			1,500	1,700
145'												
150'												
155'												
160'												
165'												
170'												
175'												
180'												
185'												
Telescoping condition (%)												
Tele.1	0			46			92			100		
Tele.2	0			46			92			100		
Tele.3	0			46			92			100		
Tele.4	0			46			92			100		
A	1			2			1			9		
G	1			1			1			1		

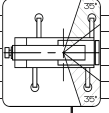
COUNTERWEIGHT 17,900 lbs (8.1 t) ON OUTRIGGER FULLY EXTEND 23'7-1/2" (7.2 m) SPREAD 360° ROTATION 58.7' (17.9 m) JIB												
Load radius in feet	Boom Length in Feet, Jib Offset angle (°)											
	41.0' (12.5 m) boom			98.9' (30.2 m) boom			156.8' (47.8 m) boom			167.3' (51.0 m) boom		
	3.5°	25.0°	45.0°	3.5°	25.0°	45.0°	3.5°	25.0°	45.0°	3.5°	25.0°	45.0°
10'												
12'												
15'												
20'												
25'												
30'	11,300											
35'	10,200			9,100								
40'	9,300	7,300		9,100								
45'	8,500	6,800		9,100								
50'	7,900	6,500		9,100			7,600			6,600		
55'	7,300	6,100	5,500	9,100	6,800		7,600			6,600		
60'	6,900	5,800	5,300	9,000	6,600		7,600			6,600		
65'	6,400	5,600	5,000	8,500	6,300		7,600			6,600		
70'	6,100	5,400	4,800	8,100	6,100	5,300	7,600	6,100		6,600		
75'	5,800	5,100	4,600	7,700	5,900	5,100	7,500	5,900		6,600	5,900	
80'	5,400	4,800	4,500	7,400	5,800	5,000	7,300	5,800		6,600	5,700	
85'	5,000	4,600		7,100	5,600	4,800	7,200	5,600	5,000	6,600	5,600	
90'	4,700	4,400		6,800	5,400	4,700	7,000	5,500	4,900	6,600	5,500	4,800
95'				6,500	5,300	4,600	6,800	5,400	4,700	6,600	5,300	4,800
100'				6,300	5,200	4,500	6,200	5,300	4,600	6,000	5,200	4,700
105'				6,000	5,000	4,400	5,400	5,100	4,500	5,200	5,100	4,500
110'				5,600	4,900	4,300	4,700	5,000	4,400	4,500	5,000	4,500
115'				5,000	4,700	4,200	4,100	4,900	4,300	3,900	4,900	4,400
120'				4,500	4,600	4,200	3,600	4,600	4,300	3,300	4,500	4,300
125'				3,900	4,500		3,100	4,000	4,200	2,800	3,900	4,200
130'				3,500	4,000		2,600	3,500	4,100	2,400	3,400	4,000
135'				3,100	3,400		2,200	3,000	3,500	1,900	2,900	3,500
140'				2,700	3,000		1,700	2,500	3,000	1,500	2,400	3,000
145'				2,300				2,100	2,500		2,000	2,500
150'				2,000				1,700	2,100		1,600	2,000
155'									1,600			1,600
160'												
165'												
170'												
175'												
180'												
185'												
Telescoping condition (%)												
Tele.1	0			46			92			100		
Tele.2	0			46			92			100		
Tele.3	0			46			92			100		
Tele.4	0			46			92			100		
A	1			2			1			9		
G	1			1			1			1		

A : Boom block  
G : Number of parts of line

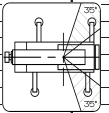
NOTE: The lifting capacity data stored in the LOAD MOMENT INDICATOR (AML-E2) is based on the standard number of parts of line listed in the chart.

# GT-1200XL-2 RATED LIFTING CAPACITIES (IN POUNDS)

COUNTERWEIGHT 17,900 lbs (8.1 t) ON OUTRIGGER FULLY EXTEND 23'7-1/2" (7.2 m) SPREAD SMART CHART 33.8' (10.3 m) JIB												
Load radius in feet	Boom Length in Feet, Jib Offset angle (°)											
	41.0' (12.5 m) boom			98.9' (30.2 m) boom			156.8' (47.8 m) boom			167.3' (51.0 m) boom		
	3.5°	25.0°	45.0°	3.5°	25.0°	45.0°	3.5°	25.0°	45.0°	3.5°	25.0°	45.0°
10'	14,600											
12'	14,600											
15'	14,600											
20'	14,600											
25'	14,600	14,600										
30'	14,600	13,300	10,600	14,600								
35'	14,600	12,100	9,900	14,600								
40'	14,100	11,000	9,300	14,600	13,100							
45'	12,500	10,200	8,800	14,600	12,300	9,600	12,100					
50'	11,300	9,600	8,500	14,600	11,700	9,300	12,100	11,400				
55'	10,300	9,000	8,300	14,600	11,200	9,000	12,100	11,000				
60'	9,400	8,600		14,600	10,700	8,700	12,100	10,600	8,700	11,000		
65'	8,700	8,400		13,800	10,200	8,500	12,100	10,300	8,500	11,000	10,100	8,400
70'				12,900	9,800	8,300	12,000	9,900	8,300	11,000	9,800	8,200
75'				12,200	9,500	8,200	11,500	9,600	8,100	10,700	9,500	8,100
80'				11,300	9,100	8,000	10,600	9,400	8,000	10,300	9,300	7,900
85'				9,900	8,900	7,900	9,200	9,100	7,800	9,200	9,000	7,800
90'				8,700	8,600	7,800	8,000	8,900	7,700	8,000	8,700	7,600
95'				7,600	8,300	7,700	7,000	7,900	7,500	6,900	7,900	7,500
100'				6,700	7,200		6,000	6,900	7,400	6,000	6,900	7,400
105'				5,800	6,300		5,200	6,000	6,500	5,100	6,000	6,500
110'				5,000	5,400		4,400	5,200	5,600	4,300	5,100	5,600
115'				4,400	4,700		3,700	4,400	4,800	3,700	4,400	4,800
120'				3,800			3,100	3,700	4,100	3,000	3,700	4,100
125'				3,200			2,600	3,100	3,400	2,500	3,100	3,400
130'							2,000	2,600	2,800	2,000	2,600	2,800
135'							1,600	2,000	2,300	1,500	2,000	2,300
140'								1,500			1,500	1,700
145'												
150'												
155'												
160'												
165'												
170'												
175'												
180'												
185'												
Telescoping condition (%)												
Tele.1	0			46					92			100
Tele.2	0			46					92			100
Tele.3	0			46					92			100
Tele.4	0			46					92			100
A	1			2					1			9
G	1			1					1			1



COUNTERWEIGHT 17,900 lbs (8.1 t) ON OUTRIGGER FULLY EXTEND 23'7-1/2" (7.2 m) SPREAD SMART CHART 58.7' (17.9 m) JIB												
Load radius in feet	Boom Length in Feet, Jib Offset angle (°)											
	41.0' (12.5 m) boom			98.9' (30.2 m) boom			156.8' (47.8 m) boom			167.3' (51.0 m) boom		
	3.5°	25.0°	45.0°	3.5°	25.0°	45.0°	3.5°	25.0°	45.0°	3.5°	25.0°	45.0°
10'												
12'												
15'												
20'												
25'												
30'	11,300											
35'	10,200			9,100								
40'	9,300	7,300		9,100								
45'	8,500	6,800		9,100								
50'	7,900	6,500		9,100			7,600			6,600		
55'	7,300	6,100	5,500	9,100	6,800		7,600			6,600		
60'	6,900	5,800	5,300	9,000	6,600		7,600			6,600		
65'	6,400	5,600	5,000	8,500	6,300		7,600			6,600		
70'	6,100	5,400	4,800	8,100	6,100	5,300	7,600	6,100		6,600		
75'	5,800	5,100	4,600	7,700	5,900	5,100	7,500	5,900		6,600	5,900	
80'	5,400	4,800	4,500	7,400	5,800	5,000	7,300	5,800		6,600	5,700	
85'	5,000	4,600		7,100	5,600	4,800	7,200	5,600	5,000	6,600	5,600	
90'	4,700	4,400		6,800	5,400	4,700	7,000	5,500	4,900	6,600	5,500	4,800
95'				6,500	5,300	4,600	6,800	5,400	4,700	6,600	5,300	4,800
100'				6,300	5,200	4,500	6,700	5,300	4,600	6,500	5,200	4,700
105'				6,000	5,000	4,400	6,500	5,100	4,500	6,500	5,100	4,500
110'				5,800	4,900	4,300	6,300	5,000	4,400	6,400	5,000	4,500
115'				5,400	4,700	4,200	6,100	4,900	4,300	6,300	4,900	4,400
120'				4,800	4,600	4,200	5,700	4,900	4,300	6,100	4,800	4,300
125'				4,200	4,500		5,300	4,200	4,200	6,000	4,100	4,200
130'				3,700	4,200		4,900	4,100	4,100	5,800	3,900	4,100
135'				3,200	3,600		4,500	3,700	3,700	5,500	3,600	3,600
140'				2,800	3,100		4,100	3,300	3,300	5,200	3,300	3,300
145'				2,300			3,700	2,900	2,900	4,900	3,000	3,000
150'				2,000			3,300	2,600	2,600	4,600	2,700	2,700
155'							2,900	2,300	2,300	4,300	2,400	2,400
160'							2,500	2,000	2,000	4,000	2,100	2,100
165'							2,100	1,700	1,700	3,700	1,800	1,800
170'							1,700	1,400	1,400	3,400	1,500	1,500
175'							1,300	1,100	1,100	3,100	1,200	1,200
180'							900	800	800	2,800	900	900
185'							500	500	500	2,500	500	500
Telescoping condition (%)												
Tele.1	0			46					92			100
Tele.2	0			46					92			100
Tele.3	0			46					92			100
Tele.4	0			46					92			100
A	1			2					1			9
G	1			1					1			1



A : Boom block  
G : Number of parts of line

NOTE: The lifting capacity data stored in the LOAD MOMENT INDICATOR (AML-E2) is based on the standard number of parts of line listed in the chart.



# WARNING AND OPERATING INSTRUCTIONS

## NOTES FOR LIFTING CAPACITIES

### GENERAL

1. RATED LIFTING CAPACITIES apply only to the machine as originally manufactured and normally equipped by Tadano Ltd. Modifications to the machine or use of optional equipment other than that specified can result in a reduction of capacity.
2. Hydraulic cranes can be hazardous if improperly operated or maintained. Operation and maintenance of this machine must be in compliance with information, in the Operation and Maintenance Manual supported with the crane. If this manual is missing, order a replacement through the distributor.
3. The operator and other personnel associated with this machine shall fully acquaint themselves with the latest American National Standards Institute (ANSI) safety standards for cranes.

### SET UP

1. Rated lifting capacities on the chart are the maximum allowable crane capacities and are based on the machine standing level on firm supporting surface under ideal job conditions. Depending on the nature of the supporting surface, it may be necessary to have structural supports under the outrigger floats to spread the loads to a larger bearing surface.
2. For outrigger operation, outriggers shall be properly extended with tires free of supporting surface before operating crane.

### OPERATION

1. Rated lifting capacities have been tested to and meet minimum requirements of SAE J1063-cantilevered Boom Crane Structures Method of Test.
2. Rated lifting capacities do not exceed 85% of the tipping load on outriggers fully extended as determined by SAE J765-Crane Stability Test Code. Rated lifting capacities for partially extended outriggers are determined from the formula, Rated Lifting Capacities = (Tipping Load-0.1 x Tip Reaction) / 1.25.
3. Rated lifting capacities are based on actual load radius increased by boom deflection.
4. The weight of handling device such as hook blocks, slings, etc., must be considered as part of the load and must be deducted from the lifting capacities.
5. Rated lifting capacities are based on freely suspended loads and make no allowance for such factors as the effect of wind, sudden stopping of loads, supporting surface conditions, operating speeds, side loads, etc. Side pull on boom or jib is extremely dangerous. Such action can damage the boom, jib or slewing mechanism, and lead to overturning of the crane.
6. Rated lifting capacities do not account for wind on lifted load or boom. We recommend against working under the condition that the load is out of control due to a strong wind. During boom lift, consider that the rated lifting capacity is reduced by 50% when the wind speed is 20 mph (9 m/s) to 27 mph (12 m/s) ; reduced by 70% when the wind speed is 27 mph (12 m/s) to 31 mph (14 m/s). If the wind speed is 31 mph (14 m/s) or over, stop operation. During jib lift, stop operation if the wind speed is 20 mph (9 m/s) or over.
7. Rated lifting capacities at load radius shall not be exceeded. Do not tip the crane to determine allowable loads.
8. Do not operate at boom lengths, radii, or boom angle, where no capacities are shown. Crane may overturn without any load on the hook.
9. When boom length is between values listed, refer to the rated lifting capacities of the next longer and next shorter booms for the same radius. The lesser of the two rated lifting capacities shall be used.
10. When making lifts at a load radius not shown, use the next longer radius to determine allowable capacity.
11. Load per line should not exceed 15,900 lbs. (7,200 kg) for main winch and auxiliary winch.
12. Check the actual number of parts of line with LOAD MOMENT INDICATOR (AML-E2) before operation. Maximum lifting capacity is restricted by the number of parts of line of LOAD MOMENT INDICATOR (AML-E2). Limited capacity is as determined from the formula, Single line pull for main winch 15,900 lbs. (7,200 kg) x number of parts of line.

13. The boom angle before loading should be greater to account for deflection. For rated lifting capacities, the loaded boom angle and the load radius is for reference only. The 41.0' (12.5 m) boom length capacities are based on boom fully retracted.
14. The maximum capacity without boom pin (B-pin) is shown in the rated lifting capacity table.
15. The ability to telescope loads is limited by hydraulic pressure, boom angle, boom length, crane maintenance, etc.
16. For lifting capacity of single top, deduct the weight of the load handling equipment from the rated lifting capacity of the boom. For the lifting capacity of single top, the net capacity shall not exceed 15,900 lbs. (7,200 kg) including the main boom hook mass attached to the boom.
17. When the base jib or top jib or both jibs are dismantled, set the jib state switch to the DISMOUNTED position.
18. When erecting and stowing jib, be sure to retain it by hand or by other means to prevent its free movement.
19. Use "ANTI-TWOBLOCK" disable switch when erecting and stowing jib and when stowing hook block. While the switch is pushed, the hoist does not stop, even when overwind condition occurs.
20. When lifting a load by using jib (aux.winch) and boom (main winch) simultaneously, do the following:
  - Enter the operation status as jib operation, not as boom operation.
  - Before starting operation, make sure that mass of load is within rated lifting capacity for jib.
21. Outriggers shall be extended 23'7-1/2" (7.2 m) spread when mounting or dismantling removable counterweight.

### DEFINITIONS

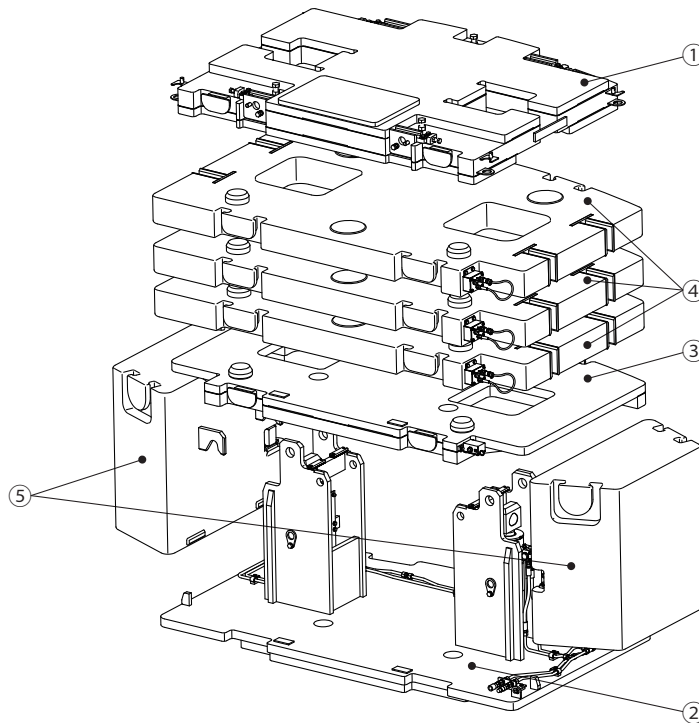
1. Load Radius: Horizontal distance from a projection of the axis of rotation to supporting surface before loading to the center of the vertical hoist line or tackle with load applied.
2. Loaded Boom Angle: The angle between the boom base section and the horizontal, after lifting the rated lifting capacity at the load radius.
3. Working Area: Area measured in a circular arc about the centerline of rotation.
4. Freely Suspended Load: Load hanging free with no direct external force applied except by the hoist line.
5. Side Load: Horizontal side force applied to the lifted load either on the ground or in the air.

# WARNING AND OPERATING INSTRUCTIONS

## NOTES FOR LOAD MOMENT INDICATOR (AML-E2)

1. Set AML select keys in accordance with the actually operating crane conditions and don't fail to make sure, before crane operation, that the displays on front panel are correct.
2. When operating crane:
  - Set starter switch to "ON"
  - Press the outrigger state select key to register for the outrigger operation. If the display agrees with the actual state, press the set key to register. After the completion of the registration, the display returns to the crane operation status.
  - Press the counterweight state select key to register for the counterweight state. If the display agrees with the actual state, press the set key to register. After the completion of the registration, the display returns to the crane operation status.
  - Press the lift state select key to register the lift state to be used (single top/jib/boom).
  - Each time the lift state select key is pressed, the display changes. If the display agrees with the actual state, press the set key to register. After the completion of the registration, the display returns to the crane operation status.
  - When erecting and stowing jib, select the status of jib set (Jib state indicative symbol lights up).
3. This machine is equipped with an automatic slewing stopping device. (For the details, see Operation and Maintenance Manual.) But, operate very carefully because the automatic slewing stop does not work in the following cases.
  - When the "AML OVERRIDE" switch is set to "ON" and the "Override key switch" outside the cab is "ON".
4. During crane operation, make sure that the displays on front panel are in accordance with actual operating conditions. The displayed values of LOAD MOMENT INDICATOR (AML-E2) are based on freely suspended loads and make no allowance for such factors as the effect of wind, sudden stopping of loads, supporting surface conditions, operating speed, side loads, etc.
5. For safe operation, it is recommended when extending and lowering boom or slewing, lifting loads shall be appropriately reduced.
6. LOAD MOMENT INDICATOR (AML-E2) is intended as an aid to the operator. Under no condition should it be relied upon to replace use of capacity charts and operating instruction. Sole reliance upon LOAD MOMENT INDICATOR (AML-E2) aids in place of good operating practice can cause an accident. The operator must exercise caution to assure safety.
7. The lifting capacity differs depending on the outrigger extension width and slewing position. Work with the capacity corresponding to the outrigger extension width and slewing position. For the relationship among the outrigger extension width, slewing position and lifting capacities, refer to the working area charts.

# GT-1200XL-2 COUNTERWEIGHT



	0 lbs	7,700 lbs	12,800 lbs	17,900 lbs	25,400 lbs	33,000 lbs	40,600 lbs	55,100 lbs
① 7,700 lbs		1	1	1	1	1	1	1
② 5,100 lbs			1	1	1	1	1	1
③ 5,100 lbs				1	1	1	1	1
④ 7,550 lbs					1	2	3	3
⑤ 7,300 lbs								2

# GT-1200XL-2 AXLE WEIGHT DISTRIBUTION CHART

		lbs			kg		
		GVW	Front	Rear	GVW	Front	Rear
Base machine		89,900	44,800	45,100	40,780	20,320	20,460
Remove	7.9 t hook ball	-400	-650	250	-175	-300	125
	top and base jib	-2,550	-2,950	400	-1,160	-1,345	185
	single top	-100	-200	100	-55	-105	50
Add	7.9 t hook ball (stowed on carrier deck)	400	450	-50	175	205	-30
	55 t hook block	1,450	2,500	-1,050	650	1,135	-485
	C/W 7,700 lbs on upper	7,700	-3,450	11,150	3,500	-1,555	5,055
	C/W 7,700 lbs on upper + 5,100 lbs on carrier deck	12,800	200	12,600	5,800	90	5,710
C/W 7,700 lbs on upper + 10,200 lbs on carrier deck		17,900	3,850	14,050	8,100	1,735	6,365

		lbs			kg		
		GVW	Front	Rear	GVW	Front	Rear
Base machine		89,900	44,800	45,100	40,780	20,320	20,460
Add: C/W 7,700 lbs on upper 55 t hook block 7.9 t hook ball (stowed on carrier deck) Remove: 7.9 t hook ball		99,050	43,650	55,400	44,930	19,805	25,125
Add: C/W 7,700 lbs on upper + 5,100 lbs on carrier deck 55 t hook block 7.9 t hook ball (stowed on carrier deck) Remove: 7.9 t hook ball		104,150	47,300	56,850	47,230	21,450	25,780
Add: C/W 7,700 lbs on upper + 10,200 lbs on carrier deck 55 t hook block 7.9 t hook ball (stowed on carrier deck) Remove: 7.9 t hook ball		109,250	50,950	58,300	49,530	23,095	26,435
Permissible axle load		110,250	51,150	59,100	50,000	23,200	26,800

# AXLE WEIGHT DISTRIBUTION EQUIPPED WITH DOLLY

	lbs				kg			
	GVW	Front	Rear	Dolly	GVW	Front	Rear	Dolly
Base machine without 7.9 t hook *Dolly weight is not included	89,500	34,100	38,800	16,600	40,605	15,475	17,610	7,520

---

**Tadano Ltd.**

KANDA SQUARE 18th Floor,  
2-2-1 Kanda-Nishikicho,  
Chiyoda-ku, Tokyo 101-0054, Japan  
PHONE: +81-3-6811-7309  
[www.tadano.com](http://www.tadano.com)

**Tadano America Corporation**

4242 West Greens Road.  
Houston, Texas, 77066 U.S.A.  
PHONE: (281) 869-0030  
FAX: (281) 869-0040  
[www.tadanoamerica.com](http://www.tadanoamerica.com)